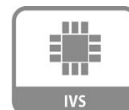


4x IR Mini PTZ Dome

2MP Indoor/Outdoor Network Camera



- Max 60fps@720p and 30fps@1080p
- Powerful 4x Optical Zoom
- True WDR
- IR Distance Up to 30m (98ft)
- Intelligent Video System (optional)
- Built-in Mic
- POE



System Overview

Featuring a True Day/Night, 2-megapixel resolution, Pan/Tilt/Zoom (PTZ) camera with a 4x optical zoom lens, this series provides an all-in-one solution for capturing long distance video surveillance for outdoor applications. The series combines a day/night mechanical IR cut filter for the highest image quality for variable lighting conditions during the day.

Intelligent Video System (IVS)

With optional built-in intelligent video analytics, the camera has the ability to detect and analyze moving objects for improved video surveillance. The camera provides optional standard intelligence at the edge allowing detection of multiple object behaviors such as abandoned or missing objects. IVS also supports Tripwire analytics, allowing the camera to detect when a pre-determined line has been crossed, and Facial Detection, for searching or identification of individuals.

Environmental

With a temperature range of -30°C ~ +60°C (-22°F ~ +140°F), the camera is designed for extreme temperature environments.

Protection

Supporting ±25% input voltage tolerance, this camera suits even the most unstable conditions for outdoor applications. Its 8KV lightning rating provides protection against the camera and its structure from the effects of lightning.

Functions

True Day/Night

A day/night mechanical IR cut filter makes this camera ideal for applications with fluctuating lighting conditions, delivering color images during the day and automatically switching to monochrome as the scene darkens.

Wide Dynamic Range

Embedded with industry leading wide dynamic range (WDR) technology, vivid pictures are achieved even in the most intense contrast lighting conditions. For applications with both bright and low lighting conditions that change quickly, True WDR (120dB) optimizes both the bright and dark areas of a scene at the same time to provide usable video.

Technical Specification

Camera

Image Sensor	1/2.7" Exmor CMOS
Effective Pixels	1944 H x 1092 V
Scanning System	Progressive
Electronic Shutter Speed	1/1 ~ 1/30,000s
Minimum Illumination	Color: 0.05Lux@F1.6; B/W: 0.005Lux@F1.6; 0Lux (IR on)
S/N Ratio	More than 50dB
IR Distance	30m (98ft)
IR On/Off Control	Auto / Manual
IR LEDs	2

Lens

Lens Type	Motorized / Auto Iris
Mount Type	Board-in
Focal Length	2.7mm~11mm (4x Optical zoom)
Max Aperture	F1.6 ~ F2.8
Angle of View	H: 112.5° ~ 39°
Focus Control	Auto / Manual
Close Focus Distance	100mm ~ 1000mm

PTZ

Pan/Tilt Range	Pan: 0° ~ 360° endless; Tilt: 0° ~ 90°, auto flip 180°
Manual Control Speed	Pan: 0.1° ~ 100° /s; Tilt: 0.1° ~ 60° /s
Preset Speed	Pan: 100° /s; Tilt: 60° /s
Presets	300 (DH-SD)
PTZ Mode	5 Pattern, 8 Tour, Auto Pan, Auto Scan
Speed Setup	Human-oriented focal length/ speed adaptation
Power up Action	Auto restore to previous PTZ and lens status after power failure
Idle Motion	Activate Preset/ Scan/ Tour/ Pattern if there is no command in the specified period
Time Task	Auto activation of Preset/ Pan/ Scan/ Tour/ Pattern by preset-time
Protocol	DH-SD, Pelco-P/D (Auto recognition)

Intelligence

IVS (optional)	Tripwire, Intrusion, Abandoned Object Detection, Missing Object Detection, Face Detection
----------------	---

Video

Compression	H.264 / MJPEG
Streaming Capability	2 Streams
Resolution	1080p (1920×1080) / 720p (1280×720) / D1 (704×576/704×480) / CIF (352×288/352×240)
Frame Rate	Main Stream: 1080p (1 ~ 30fps), 720p (1~60fps) Sub Stream: D1/CIF (1 ~ 30fps)
Bit Rate Control	CBR / VBR
Bit Rate	H.264: 448K ~ 8192Kbps, MJPEG: 56K ~ 10240Kbps
Day/Night	Auto (ICR) / Color / B/W
BLC Mode	BLC / HLC / WDR (120dB)
White Balance	Auto, ATW, Indoor, Outdoor, Manual
Gain Control	Auto / Manual
Noise Reduction	Ultra DNR (2D/3D)
Motion Detetion	Off / On (4 Zone, Rectangle)
Region of Interest	Off / On (4 Zone)
Digital Zoom	16x
Flip	0°/180°
Privacy Masking	Up to 24 Areas

Audio

Compression	G.711a / G.711Mu (32kbps)/ PCM (128kbps)
Interface	Built-in Mic

Network

Ethernet	RJ-45 (10/100Base-T)
Protocol	IPv4/ IPv6, HTTP, HTTPS, SSL, TCP/IP, UDP, UPnP, ICMP, IGMP, SNMP, RTSP, RTP, SMTP, NTP, DHCP, DNS, PPPOE, DDNS, FTP, IP Filter, QoS, Bonjour, 802.1x
Interoperability	ONVIF, PSIA, CGI
Streaming method	Unicast / Multicast
Max. User Access	20
Edge Storage	Micro SD (128GB) Memory Status Display (Normal / Error/ Active / Formatting / Lock), NAS (Network Attached Storage), Local PC for Instant Recording, Micro SD, Max 128GB
Web Viewer	IE10....
Management Software	Smart PSS, DSS
Smart Phone	Android, Ios

Certifications

Certifications	FCC (SEFD1507103)
	UL (E234884-A110-UL)

Interface

Audio Interface	Built-in Mic
RS485	N/A
Alarm	N/A

Electrical

Power Supply	DC12V, PoE (af Class 0)
Power Consumption	Max. 10W, 13W (IR on)

Environmental

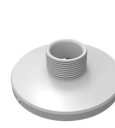
Operating Conditions	-30°C ~ +60°C (-22°F ~ +140°F) / Less than 90% RH
	*Start up should be done at above -35°C (-31°F)
Storage Conditions	-30°C ~ +60°C (-22°F ~ +140°F) / Less than 90% RH

Construction

Casing	Metal + Plastic
Dimensions	Φ132.7 mm x 116.5 mm (Φ5.22" x 4.59")
Net Weight	0.6kg (1.32lbs)
Gross Weight	0.95kg (2.09lbs)

Accessories

Optional:



PFA103
Mount Adapter



PFB300C
Ceiling mount



PFB302S
Wall Mount



PFA152
Pole mount

Wall Mount	Pole Mount
PFA103+PFB302S	PFA103+PFB302S+PFA152
CeilingMount	
PFA103+PFB300C	

Ordering Information

Type	Part Number	Description
2MP Camera	DH-SD29A204TN-GN	2MP HD PTZ 4x Zoom, WDR, IR up to 30m (98ft), POE
	DH-SD29A204TN-GNI	2MP HD PTZ 4x Zoom, WDR, IR up to 30m (98ft), POE, IVS
Accessories	PFA103	Mount Adapter
	PFB300C	Ceiling Mount Bracket
	PFB302S	Water-proof Wall Mount Bracket
	PFA152	Pole Mount Bracket

Dimensions (mm/inch)

