



IP8160



IP8160-W

Cube Network Camera



2MP · 8M IR · Smart Stream II · AEC · PoE ·
WiFi · Compact Size

VIVOTEK's IP8160/IP8160-W is a stylish 2-megapixel cube network camera specifically designed for small-scale retail security applications. With a resolution of 1920x1080 at 30 fps, a removable IR-cut filter and built-in IR illuminators effective up to 8 meters, this remarkable camera provides users with superior image quality around the clock.

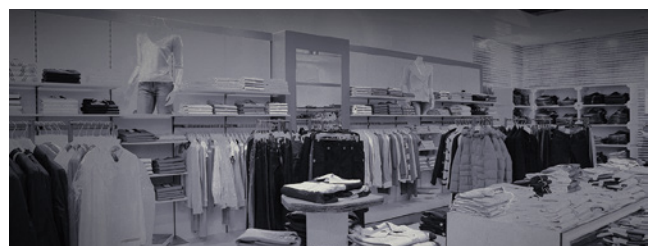
When coupled with VIVOTEK's Smart Stream II technology, the IP8160/IP8160-W can reduce both bandwidth and storage consumption by up to 50%* while retaining the same superb image quality as a Full HD camera.

Further, the camera supports two-way audio, and employs Acoustic Echo Cancellation (AEC) to greatly enhance audio quality and provide a clearer, smoother auditory image. VIVOTEK provides two easy-to-install options for this compact camera; the IP8160-W boasts a 802.11b/g/n compatible wireless connection, and the IP8160 is designed for Power over Ethernet (PoE) functionality, making setup of these two powerful cameras both quick and simple.

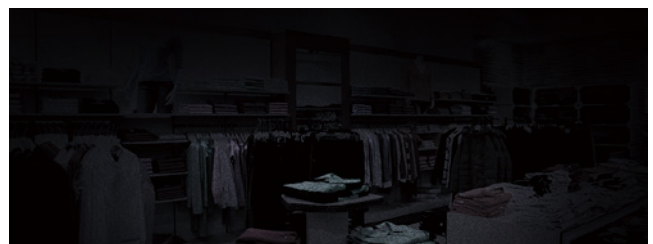
* Depending on scenes

Key Features

- 30 fps @ 1920x1080
- Built-in IR Illuminators up to 8 M
- Smart IR Technology to Avoid Overexposure
- Smart Stream II to Optimize Bandwidth Efficiency
- Built-in Microphone and Speaker for Two-way Audio
- Acoustic Echo Cancellation (AEC) for Optimizing Sound System
- Built-in 802.3af Compliant PoE (IP8160)
- Built-in 802.11 b/g/n WLAN (IP8160-W)
- Built-in MicroSD/SDHC/SDXC Card Slot for On-board Storage
- Compact Design



IR On



IR Off

Technical Specifications

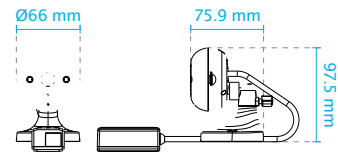
| | | | |
|-------------------------------|---|----------------------------|--|
| Model | IP8160: PoE, 8M IR IP8160-W: WiFi, 8M IR | Interface | Built-in microphone Built-in speaker |
| System Information | | Effective Range | 5 meters |
| CPU | Multimedia SoC (System-on-Chip) | Network | |
| Flash | 128 MB | Users | Live viewing for up to 10 clients |
| RAM | 256 MB | Protocols | IP8160: IPv4, IPv6, TCP/IP, HTTP, HTTPS, UPnP, RTSP/RTP/RTCP, IGMP, SMTP, FTP, DHCP, NTP, DNS, DDNS, PPPoE, CoS, QoS, SNMP, 802.1X, SSL/TLS, ARP IP8160-W: IPv4, IPv6, TCP/IP, HTTP, HTTPS, UPnP, RTSP/RTP/RTCP, IGMP, SMTP, FTP, DHCP, NTP, DNS, DDNS, SNMP, ARP |
| Camera Features | | Interface | IP8160: 10 Base-T/100 Base-TX Ethernet (RJ-45) IP8160-W: IEEE 802.11 b/g/n WLAN |
| Image Sensor | 1/2.9" Progressive CMOS | ONVIF | Supported, specification available at www.onvif.org |
| Maximum Resolution | 1920x1080 | Intelligent Video | |
| Lens Type | Fixed-focal | Video Motion Detection | Five-window video motion detection |
| Focal Length | f = 2.8 mm | Alarm and Event | |
| Aperture | F1.8 | Alarm Triggers | Motion detection, manual trigger, periodical trigger, system boot, recording notification, camera tampering detection, audio detection |
| Field of View | 113° (Horizontal) 63° (Vertical) 136° (Diagonal) | Alarm Events | Event notification using HTTP, SMTP, FTP, NAS server and SD Card File upload via HTTP, SMTP, FTP, NAS server and SD card |
| Shutter Time | 1/5 sec. to 1/32,000 sec. | General | |
| WDR Technology | WDR Enhanced | Connectors | IP8160: RJ-45 cable connector for 10/100Mbps Network/PoE connection*1 IP8160-W: Micro USB connector for DC 5V power input*1 |
| Day/Night | Removable IR-cut filter for day & night function | LED Indicator | System power and status indicator |
| Minimum Illumination | 0.07 Lux @ F1.8 (Color) < 0.01 Lux @ F1.8(B/W) | Power Input | IP8160: IEEE 802.3af POE Class 0 IP8160-W: DC 5V |
| Pan/Tilt/Zoom Functionalities | ePTZ: 48x digital zoom (4x on IE plug-in, 12x built in) | Power Consumption | IP8160: Max. 5.5 W IP8160-W: Max. 8 W |
| IR Illuminators | Built-in IR illuminators, effective up to 8 meters with Smart IR IR LED*2 | Dimensions | Ø 66 x 38.9 mm |
| On-board Storage | Slot type: MicroSD/SDHC/SDXC card slot Seamless Recording | Weight | IP8160: 100.6 g (Camera unit), 58 g (Stand) IP8160-W: 62 g (Camera unit), 58 g (Stand) |
| Video | | Safety Certifications | CE, LVD, FCC Class B, VCCI, C-Tick |
| Compression | H.264 & MJPEG | Operating Temperature | Starting Temperature: 0°C ~ 40°C (32°F ~ 104°F) Working Temperature: 0°C ~ 40°C (32°F ~ 104°F) |
| Maximum Frame Rate | 30 fps @ 1920x1080 15 fps @ 1920x1080 (Acoustic Echo Cancellation On) | Humidity | 90% |
| Maximum Streams | 3 simultaneous streams | Warranty | 24 months |
| S/N Ratio | 70 dB | System Requirements | |
| Dynamic Range | 70 dB | Operating System | Microsoft Windows 8/7/Vista/XP/2000 |
| Video Streaming | Adjustable resolution, quality and bitrate Smart Stream II | | |
| Image Settings | Time stamp, text overlay, flip & mirror; Configurable brightness, contrast, saturation, sharpness, white balance, exposure control, gain, backlight compensation, privacy masks; Scheduled profile settings, defog, 3DNR, video rotation | | |
| Audio | | | |
| Audio Capability | Two-way Audio (Full duplex) | | |
| Compression | G.711, G.726 | | |

Technical Specifications

| | |
|-----------------------------|--|
| Web Browser | Mozilla Firefox 7~43 (streaming only) Internet Explorer 7/8/9/10/11 |
| Other Players | VLC: 1.1.11 or above QuickTime: 7 or above |
| Included Accessories | |
| Power Adapter | IP8160-W: 5V, 2A USB connector adapter |
| Others | Quick installation guide, warranty card, stand with screw kit, USB connector adapter(IP8160-W) |

Dimensions

· IP8160



· IP8160-W

