



HOW TO

Integration Guide AXIS Camera Station and AXIS Perimeter Defender

Created: December 01, 2016
Last updated: December 01, 2016
Rev: 1.0

1

Please note that AXIS does not take any responsibility for how this configuration may affect your system. If the modification fails or if you get other unexpected results, you may have to restore the factory default settings as described in the User's manual.

Introduction

The following document highlights how to integrate AXIS Perimeter Defender with Axis Camera Station's event system.

The document explains how to:

- *Configure an AXIS Camera Station rule to trigger on an intrusion.*
- *Verify that the configuration is done correctly.*

This following configuration has been tested with the following products and firmware:

AXIS Perimeter Defender 1.1.0, AXIS Q1765 firmware 5.90.1.4 and AXIS Camera Station 5.06.

Notes:

This guide assumes that AXIS Perimeter Defender has been installed and calibrated using the AXIS Perimeter Defender Setup software available on axis.com.

Step 1 – Configuration and calibration

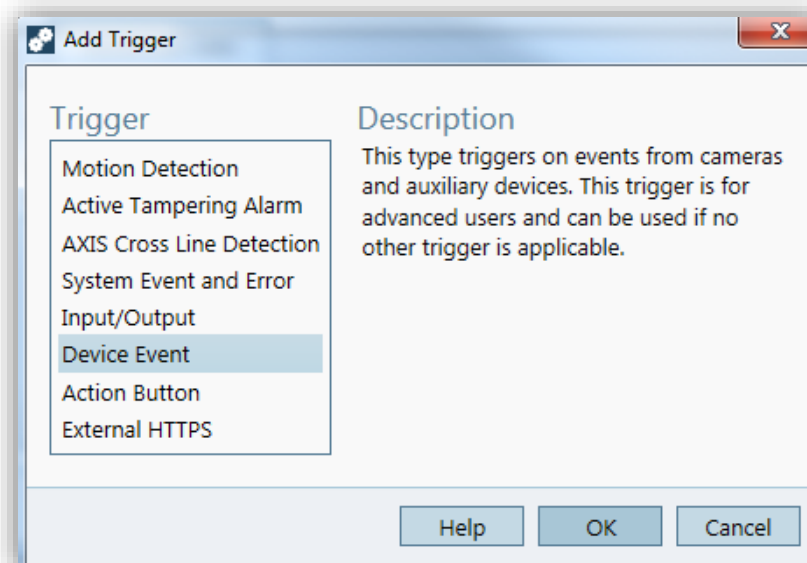
Configure and calibrate AXIS Perimeter Defender in the AXIS Perimeter Defender Setup software. For help with the installation and calibration of AXIS Perimeter Defender, please refer to the [AXIS Perimeter Defender - User Manual](#) or to the [product page](#).

Step 2 – Add the camera to AXIS Camera Station

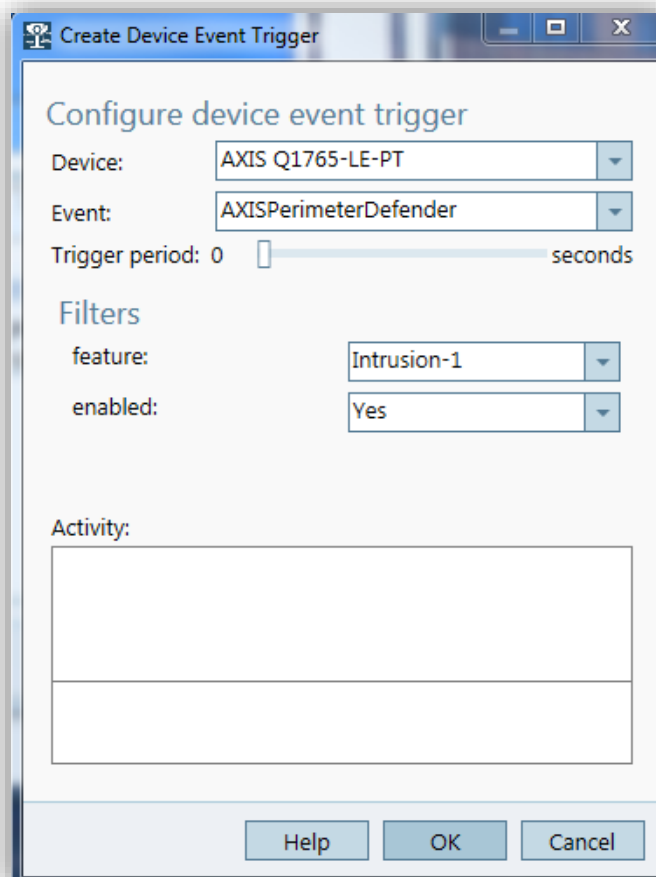
Add the camera to AXIS Camera Station by following the Add Camera wizard.

Step 3 – Configure a Device Event trigger

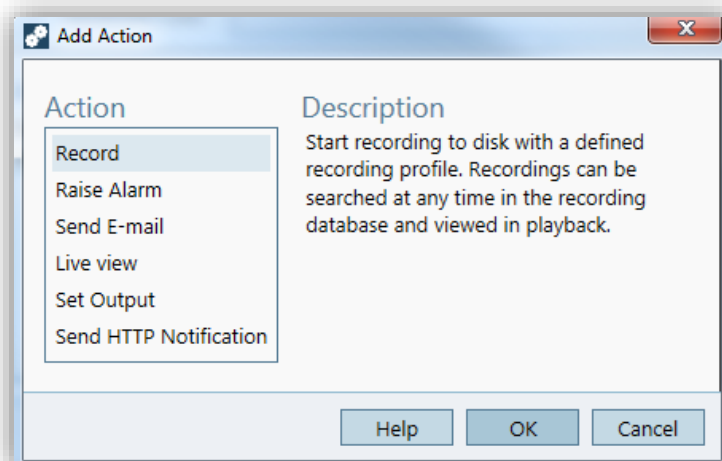
1. Go to **Configuration > Recording & Events** and open the **Advanced rules** tab.
2. Create a new rule and choose the **Device Event** trigger:



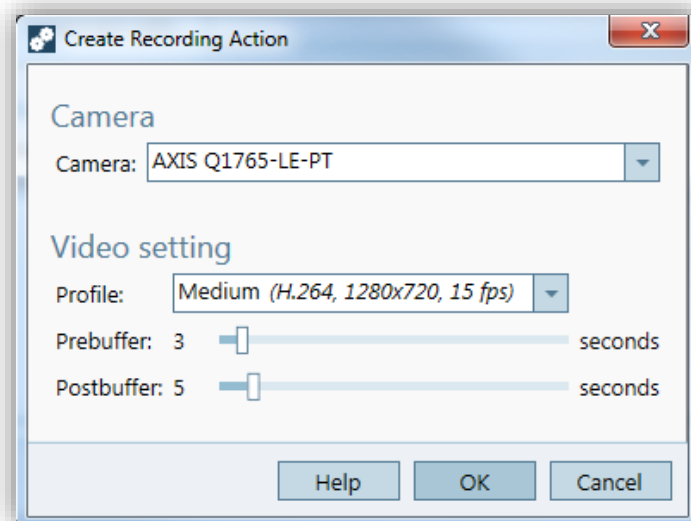
3. Select the camera where AXIS Perimeter Defender is installed and select **AXISPerimeterDefender** in the Event list.
4. Select the name of the configured Intrusion (in this case “*Intrusion-1*”) in the **feature** dropdown. If you wish to trigger the rule for all the configured scenarios, select “*ALL_SCENARIOS*”.
5. Select “*Yes*” if the trigger should be activated when there is an intrusion.
When an intrusion is detected, the Activity window will show a status change that helps to verify if the setup is correct.



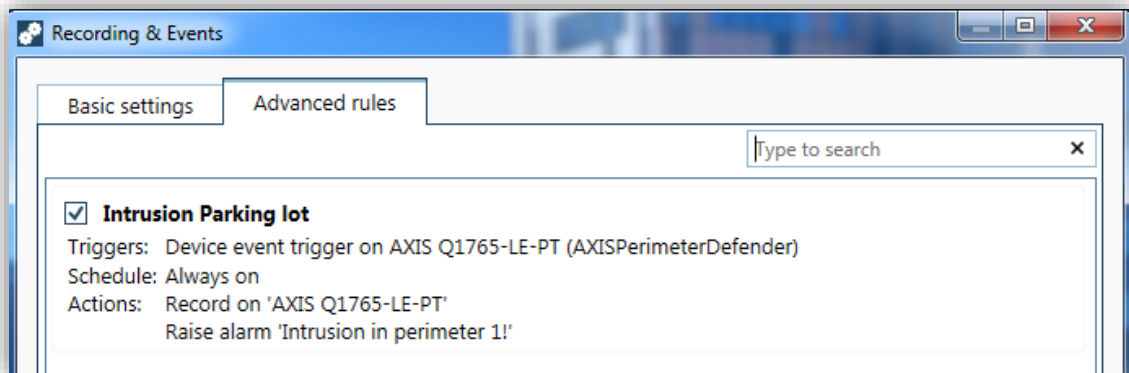
6. Click **OK** and **Next** to configure the Action(s).
7. In the **Add Action** dialog, you can add one or several actions for the rule.



In this case we add a Recording action as well as an alarm.



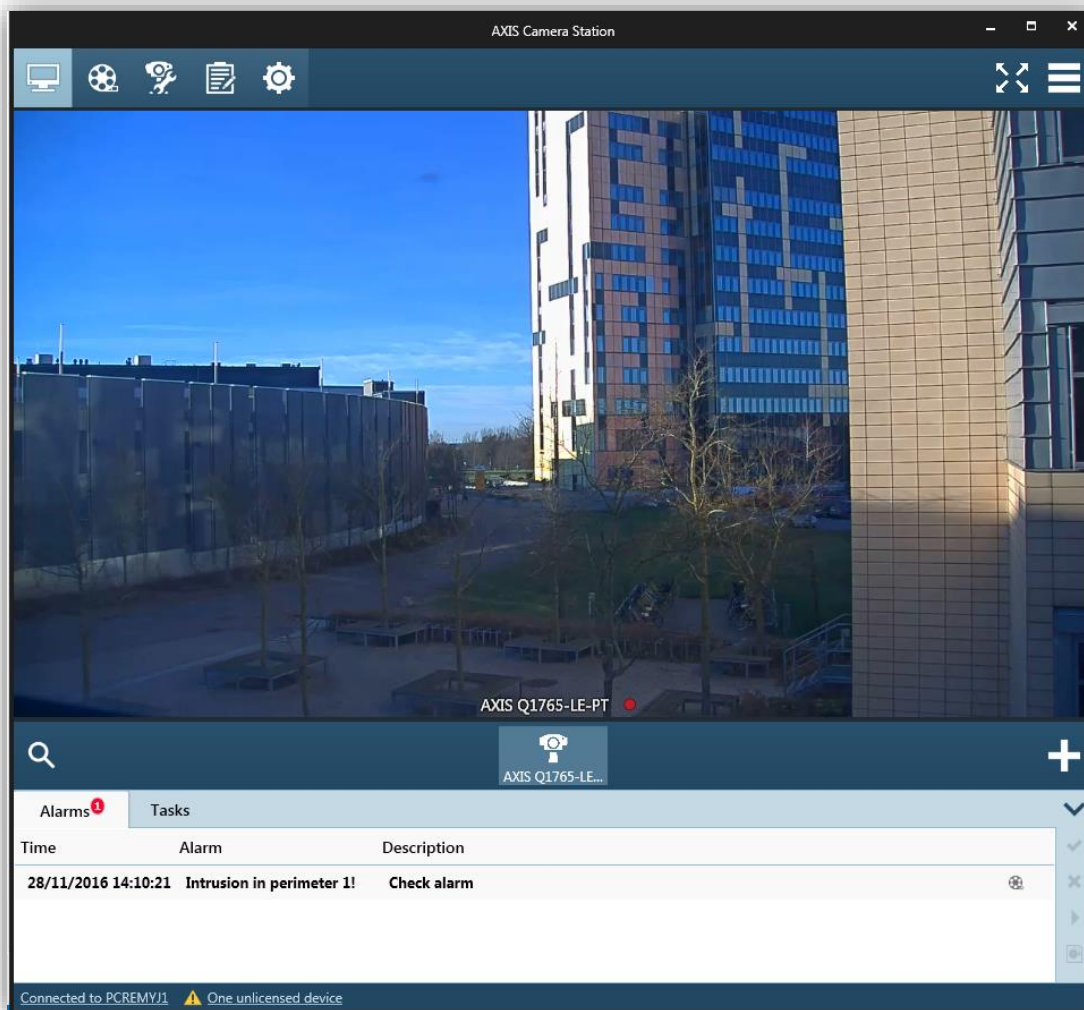
8. Click Finish to finalize the rule configuration.



Step 4 – Configuration validation

Make sure the configuration is done according to the system specifications by simulating an intrusion. This can be done by physically entering the monitored area.

In our case the recording was started and the alarm raised.



Additional information

AXIS Camera Station (current version: 5.06) currently does not show any bounding-boxes in the live or recorded video.

There is no need for a plugin. The above configuration works with a standard AXIS Camera Station installation.