

# **NETWORK VIDEO RECORDER**

## **Quick Guide**

SRN-1000



English





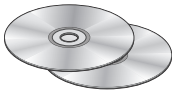
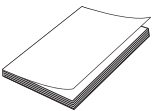
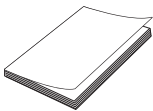
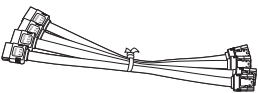

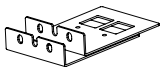


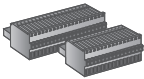
## BEFORE STARTING

Please take note of the followings before using this product.

- Do not use the product outdoor.
- Do not spill water or liquid in the connection part of the product.
- Do not impose the system to excessive shock or force.
- Do not pull out the power plug forcefully.
- Do not disassemble the product on your own.
- Do not exceed the rated input/output range.
- Use a certified power cord only.
- For the product with an input ground, use a grounded power plug.

## PACKAGE CONTENTS

Please unwrap the product, and place the product on a flat place or in the place to be installed.  
Please check the following contents are included in addition to the main unit.

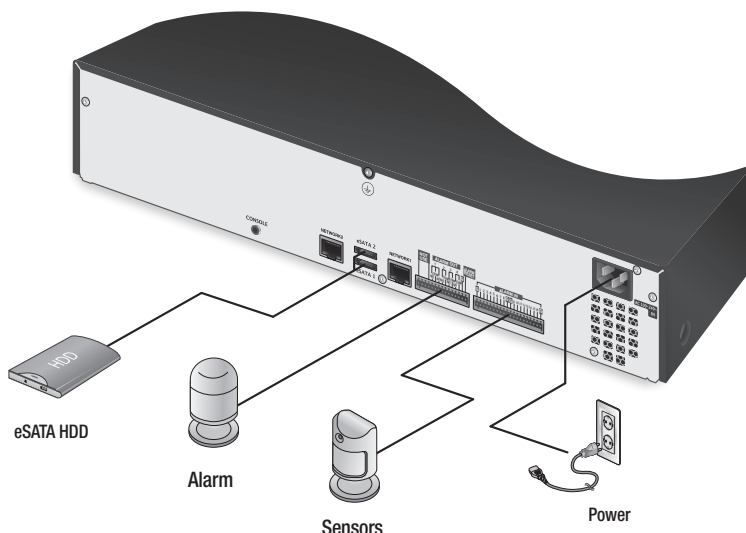
		
NVR	Power Cable	Network Viewer Software / User Manual and Installation Software CD
		
User Manual	Quick Guide (optional)	SATA Cable
		
Additional SATA power cable	Bracket Rack	Bracket Fixing Screw
		
HDD Fixing Screw	Terminal Block	



- For a model with no built-in HDD, one SATA cable and 3 screws for fixing the HDD will be added by default.

## CONNECTING TO AN EXTERNAL DEVICE

- ! Unrated or improper power source may cause damage to the system. Ensure that you use only the rated power source before pressing the POWER button.



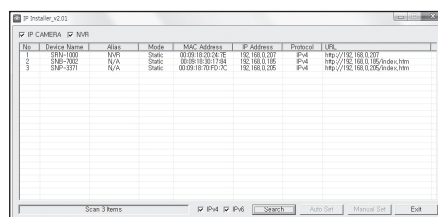
## NETWORKING WITH IP INSTALLER

Use provided IP Installer application program to search devices on the network and manually change the network settings of the searched device.

### Manual Network Setup

Run **<IP Installer\_vX.XX.exe>** to display the device search list.  
At the initial startup, both **[Auto Set]** and **[Manual Set]** will be grayed out.

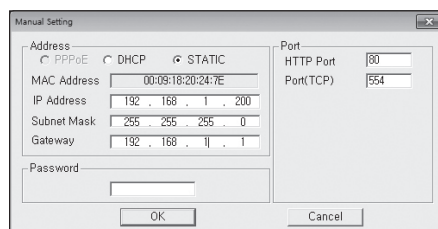
1. Select a NVR in the search list.  
Both the **[Auto Set]** and **[Manual Set]** buttons will be activated.
2. Click **[Manual Set]**.  
The Manual Setting dialog appears.  
The default values of **<IP Address>**, **<Subnet Mask>**, **<Gateway>**, **<HTTP Port>** and **<Port(TCP)>** of the NVR will be displayed.



- ! If found multiple devices assigned with the same IP address, assign different IP addresses to such devices to avoid conflict.
- If conflict has been occurred by sharing the same IP address by multiple devices, recovering may take some time.

3. In the **<Address>** pane, provide the necessary information.
  - MAC (Ethernet) Address : The MAC (Ethernet) address of the applicable NVR will be set automatically so you don't need to input it manually.

- ✍ You can configure the static IP settings only if the DHCP checkbox is unchecked.



## Auto Network Setup

Run <IP Installer\_vX.XX.exe> to display the device search list.

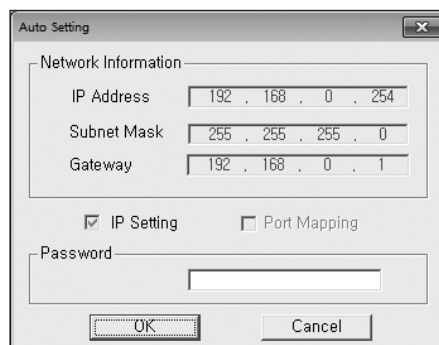
At the initial startup, both [Auto Set] and [Manual Set] will be grayed out.

1. Select a NVR in the search list.  
Both the [Auto Set] and [Manual Set] buttons will be activated.
2. Click [Auto Set].  
The Auto Setting dialog appears.  
The <IP Address>, <Subnet Mask>, and <Gateway> will be set automatically.
3. Enter the password.  
This is the login password for the "admin" user who accesses the NVR. The default password is "4321".



- The default password can be exposed to a hacking thread so it is recommended to change the password after installing the product.
- Note that the security and other related issues caused by the unchanged password shall be responsible for the user.

4. Click [OK].  
Auto network setup will be completed.

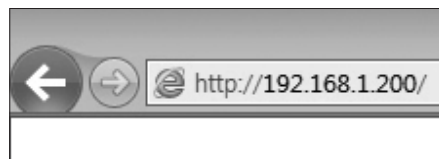


## CONNECTING WEB VIEWER

1. Open your web browser and type the IP address or URL of NVR into the URL address box.



- "192.168.1.200" is set to IP by default.
- Set to an available IP address in IP Installer or "Network > Connection Mode".
- The URL connection will be enabled only when the DDNS connection settings have been completed.



2. A user with the admin permissions should provide the admin ID and password. A registered user should provide the user ID and password.



- The default password can be exposed to a hacking thread so it is recommended to change the password after installing the product.
- Set password for your wireless network if you use the product with a wireless router. Being not protected with password or using the default wireless router password may expose your video data to potential threat.
- Note that the security and other related issues caused by the unchanged password shall be responsible for the user.

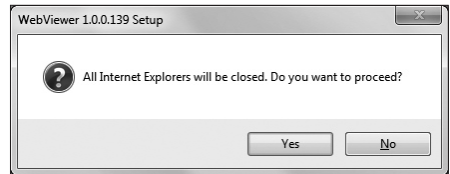


- It allows up to 10 simultaneous access including the Admin and general users.
- It does not allow multiple login of the Admin user.
- The default ID of the admin account is "admin", and the default password is "4321".
- Password of the Admin and general users can be changed in <Permission Management> menu of the NVR.
- All settings are applied by the NVR's settings.

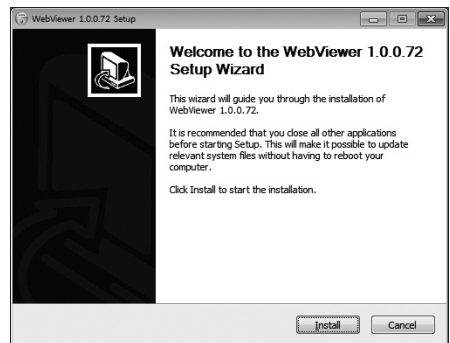
3. Click <Install ActiveX Control...>.



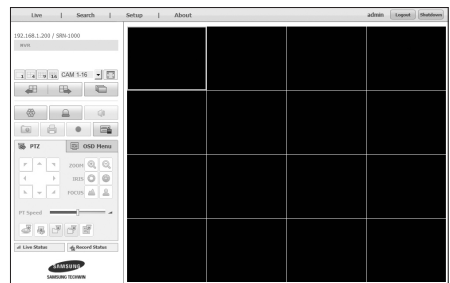
4. When the installation confirm message appear, click [Yes] button.



5. When a program installation wizard window appears, press the [Install] button to install the program.



6. When a login window appears after installing the program, log in again.  
Live Viewer's main screen appears when you log in successfully after installing the program.



## REGISTERING THE CAMERA

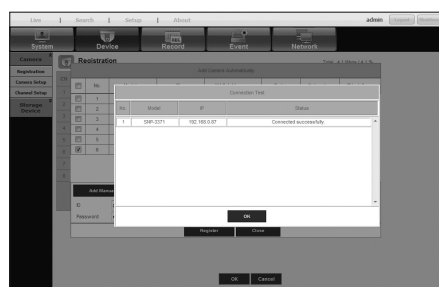
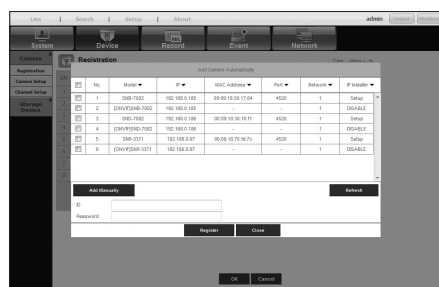
You should register your camera and save corresponding settings before watching the video of registered camera in Live Viewer.

### To register the camera

1. Click the **<Setup>** menu.
2. Click the **<Device>-<Camera>-<Registration>** menu.



3. Click the **<Auto>** in Device Registration window. "Add Camera Automatically" window appears to list up the available cameras which are present in network.
4. Click the camera(s) to register in the list.
5. Enter relevant **<ID>** and **<Password>** for the selected camera(s).
6. Click the **[Register]** button.
  - When registering multiple cameras selected in a batch, only cameras set with the same user ID and password from the selected will be registered.
7. When "Connection Test" confirmation window appears, check the registration status and click **[OK]** button. "Add Camera Automatically" window is closed and registered camera(s) is(are) displayed in the list.



8. Click **[OK]** button to complete the registration.





This equipment has been tested and found to comply with the limits for a Class A digital device, pursuant to part 15 of the FCC Rules. These limits are designed to provide reasonable protection against harmful interference when the equipment is operated in a commercial environment.

This equipment generates, uses, and can radiate radio frequency energy and, if not installed and used in accordance with the instruction manual, may cause harmful interference to radio communications. Operation of this equipment in a residential area is likely to cause harmful interference in which case the user will be required to correct the interference at his own expense.



Samsung Techwin cares for the environment at all product manufacturing stages, and is taking measures to provide customers with more environmentally friendly products.

The Eco mark represents Samsung Techwin's devotion to creating environmentally friendly products, and indicates that the product satisfies the EU RoHS Directive.



### Correct Disposal of This Product (Waste Electrical & Electronic Equipment)

(Applicable in the European Union and other European countries with separate collection systems)

This marking on the product, accessories or literature indicates that the product and its electronic accessories (e.g. charger, headset, USB cable) should not be disposed of with other household waste at the end of their working life. To prevent possible harm to the environment or human health from uncontrolled waste disposal, please separate these items from other types of waste and recycle them responsibly to promote the sustainable reuse of material resources.

Household users should contact either the retailer where they purchased this product, or their local government office, for details of where and how they can take these items for environmentally safe recycling.

Business users should contact their supplier and check the terms and conditions of the purchase contract. This product and its electronic accessories should not be mixed with other commercial wastes for disposal.



### Correct disposal of batteries in this product

(Applicable in the European Union and other European countries with separate battery return systems.)

This marking on the battery, manual or packaging indicates that the batteries in this product should not be disposed of with other household waste at the end of their working life. Where marked, the chemical symbols Hg, Cd or Pb indicate that the battery contains mercury, cadmium or lead above the reference levels in EC Directive 2006/66. If batteries are not properly disposed of, these substances can cause harm to human health or the environment.

To protect natural resources and to promote material reuse, please separate batteries from other types of waste and recycle them through your local, free battery return system.



## **SALES NETWORK**

---

### **SAMSUNG TECHWIN CO., LTD.**

Samsungtechwin R&D Center, 701, Sampyeong-dong, Bundang-gu, Seongnam-si, Gyeonggi-do, Korea, 463-400  
TEL : +82-70-7147-8740~60 FAX : +82-31-8018-3745

### **SAMSUNG TECHWIN AMERICA Inc.**

100 Challenger Rd. Suite 700 Ridgely Park, NJ 07660  
Toll Free : +1-877-213-1222 Direct : +1-201-325-6920  
Fax : +1-201-373-0124  
[www.samsungcctvusa.com](http://www.samsungcctvusa.com)

### **SAMSUNG TECHWIN EUROPE LTD.**

Samsung House, 1000 Hillswood Drive, Hillswood Business Park  
Chertsey, Surrey, UNITED KINGDOM KT16 0PS  
TEL : +44-1932-45-5300 FAX : +44-1932-45-5325

---

[www.samsungtechwin.com](http://www.samsungtechwin.com)  
[www.samsungsecurity.com](http://www.samsungsecurity.com)  
[www.samsungipolis.com](http://www.samsungipolis.com)