

RCM-1

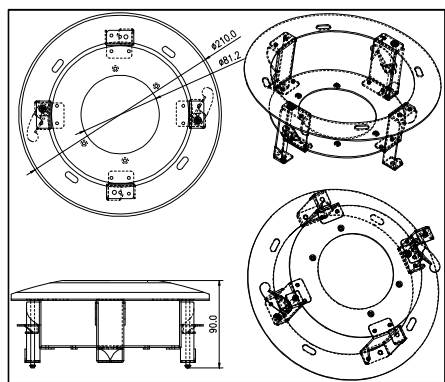
In-Ceiling Mount Bracket for Dome Camera



Features

- For In-Ceiling Mounting
- Aluminum Alloy Material with Surface Spray Treatment

Dimensions



Specifications

	RCM-1
Appearance	Hikvision white
Range of Application	Dome camera
Material	Aluminum alloy
Dimension	Φ210 mm × 90 mm (8.27" x 3.54")
Weight	600 g (21.16 ozs.)

NOTES: Install bracket on flat ceiling.

The ceiling must be capable of supporting more than three times the weight of camera and mount

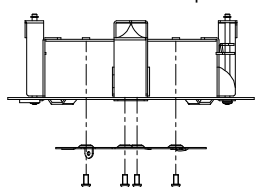
Load capacity of mount is 4.5 kg.

Fits the Following Cameras

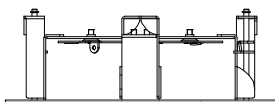
DS-2CD41xxFxx-IZ
DS-2CD27x2FWD-IZS
DS-2CD27x2F-I
DS-2CE55C2N-VFIR3

Installation

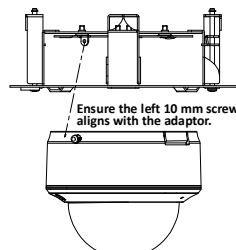
1. Choose flat ceiling for installation and screw on the adaptor.



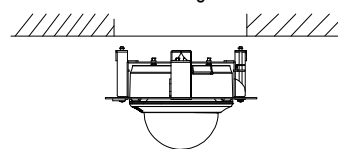
2. Complete the adaptor installation.



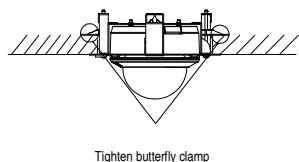
3. Screw on the dome camera.



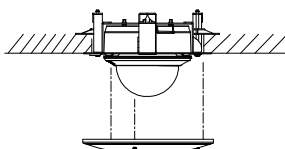
4. Insert the dome camera and mount to the ceiling.



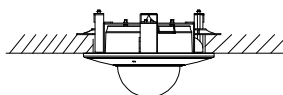
5. Screw the butterfly clamp in clockwise and clamp the mount to the ceiling.



6. Tighten three screws to fix cap ring.



7. Installation complete.



NOTE: The actual mount may vary from the picture above.

Order Model

RCM-1