

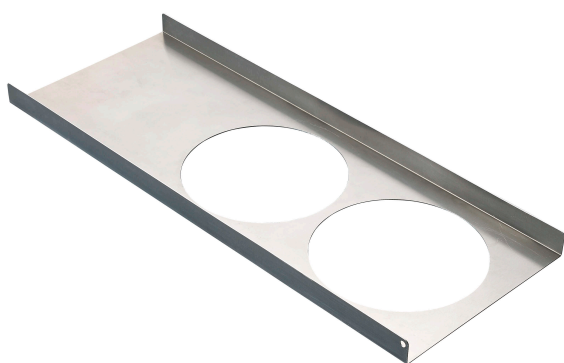
MNT-ICP-ADC Suspension Ceiling Support Kit for AUTODOME in-ceiling cameras

www.boschsecurity.com



BOSCH

Invented for life



- ▶ Load-bearing bridge design eliminates tile sag
- ▶ Fast and simple installation
- ▶ For use with AUTODOME VG5-100/600, NEZ4000/5000, and VG5-7000 series PTZ dome cameras

The MNT-ICP-ADC suspension ceiling support kit incorporates a load-bearing bridge design which eliminates tile sag by distributing the camera's weight evenly to the ceiling support system. The bridge design is also faster and simpler to install than traditional "T-bar" camera supports.

This suspension ceiling support kit fits the following series of AUTODOME in-ceiling cameras:

- VG5-100 (analog)
- VG5-600 (analog)
- NEZ-4000 (IP)
- NEZ-5000 (IP)
- VG5-7000 (IP)

Installation/configuration notes



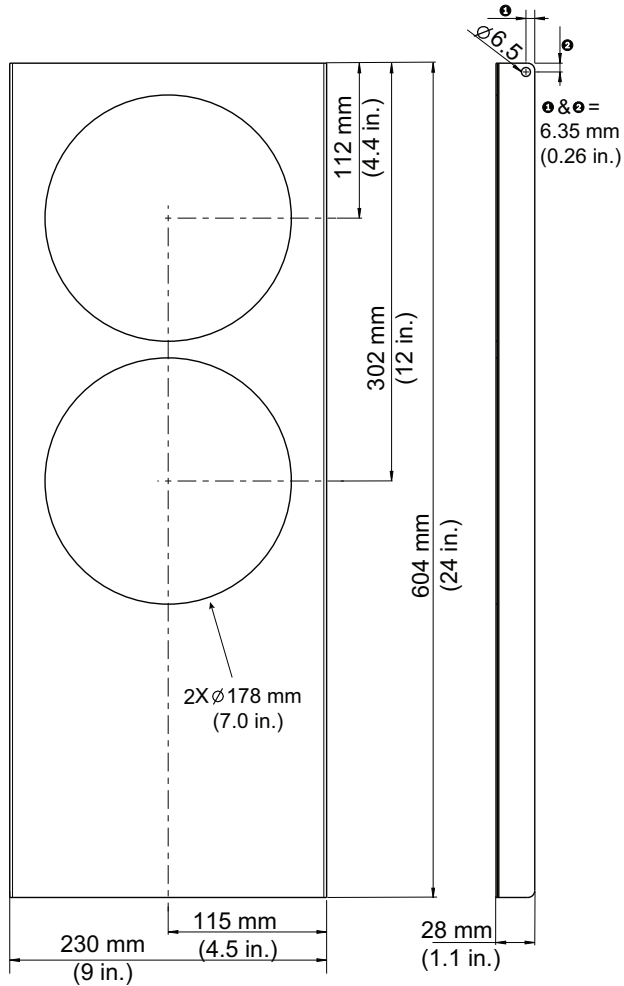
Example installation: in-ceiling AUTODOME IP 5000 HD camera clamped to MNT-ICP-ADC on top of ceiling tile

Parts included

1	MNT-ICP-ADC
1	Quick Installation Guide

Technical specifications

Dimensions	604 mm x 230 mm x 28 mm (24 in. x 9 in. x 1 in.)
Weight	0.294 kg (0.65 lb)
Construction Material	Aluminum
Standard Color / Finish	(Unpolished aluminum)



Ordering information

MNT-ICP-ADC Suspension Ceiling Support Kit for AUTO-DOME in-ceiling cameras

Suspension ceiling support kit for AUTODOME IP 4000/5000/7000 AND VG5-100/600 series in-ceiling cameras

Order number **MNT-ICP-ADC**

Represented by:**North America:**

Bosch Security Systems, Inc.
130 Perinton Parkway
Fairport, New York, 14450, USA
Phone: +1 800 289 0096
Fax: +1 585 223 9180
security.sales@us.bosch.com
www.boschsecurity.us

Europe, Middle East, Africa:

Bosch Security Systems B.V.
P.O. Box 80002
5617 BA Eindhoven, The Netherlands
Phone: + 31 40 2577 284
Fax: +31 40 2577 330
emea.securitysystems@bosch.com
www.boschsecurity.com

Asia-Pacific:

Robert Bosch (SEA) Pte Ltd, Security
Systems
11 Bishan Street 21
Singapore 573943
Phone: +65 6571 2808
Fax: +65 6571 2699
apr.securitysystems@bosch.com
www.boschsecurity.asia

China:

Bosch (Shanghai) Security Systems Ltd.
203 Building, No. 333 Fuquan Road
North IBP
Changning District, Shanghai
200335 China
Phone +86 21 22181111
Fax: +86 21 22182398
www.boschsecurity.com.cn

Latin America and Caribbean:

Robert Bosch Ltda Security Systems Division
Via Anhanguera, Km 98
CEP 13065-900
Campinas, Sao Paulo, Brazil
Phone: +55 19 2103 2860
Fax: +55 19 2103 2862
latam.boschsecurity@bosch.com
www.boschsecurity.com