

MD-WMT/MD-CMT



Arecont Vision

megapixel technology...
beyond imagination

Indoor/Outdoor wall mount and pendant mount for MegaDome™ Series

MD-WMT (Wall Mount)

MD-CMT (Ceiling Mount)



Megadome™ Accessories

High quality wall mount and pendant mount accessory designed for the Megadome™ Series. Combining MD-WMT and MD-CMT accessories with the superior imaging of an AV camera provides the perfect solution for environments in which cameras need to be less noticeable, or require additional protection from the elements.

Arecont Vision Advantages:

Superior Solution for Various Environments

- Indoor or outdoor applications

Excellent Enclosure Protection

- Heavy duty enclosure features an IP66 rating for applications in harsh environments

Easy Installation

- Easy installation and superior design, perfect for indoor or outdoor applications

Full View in All Directions

- Use the Megadome™ Series to ensure outstanding observation with excellent color sensitivity and high resolution

Vandal Resistant

- Die-cast aluminum, resistant to impact and salt damage

Designed to House: Megadome™ Series

Learn more about our products at www.arecontvision.com

www.arecontvision.com avsales@arecontvision.com +1.818.937.0700 877.CAMERA.8

Specifications

Model Numbers:

MD-WMT (Wall Mount)

MD-CMT (Ceiling Mount)

Mechanical

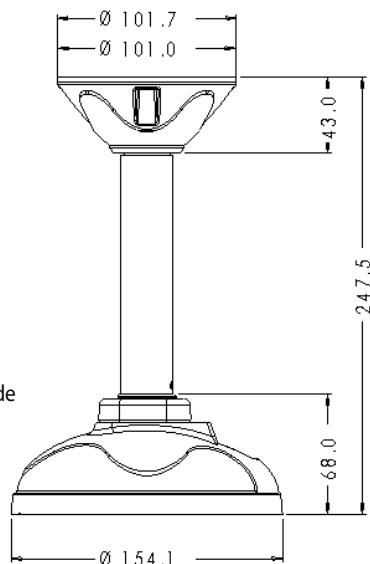
- Housing material:
Aluminum
- Color:
Ivory
- Housing Height:
MD-CMT : 9.74 in (747.5mm)
MD-WMT : 5.67in (144 mm)
- Housing Diameter:
6.06 in (154.1 mm)
- Weight w/o camera:
MD-CMT : 1.5 lbs (0.67 kg)
MD-WMT : 1.5 lbs (0.67 kg)
- Vandal Resistant

Environmental

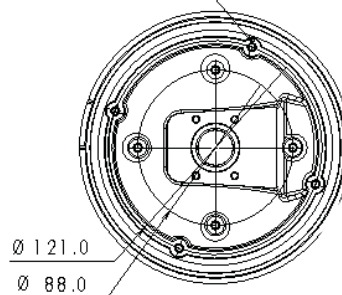
- Enclosure Protection:
IP66 Outdoor Protection Grade

Compatible cameras

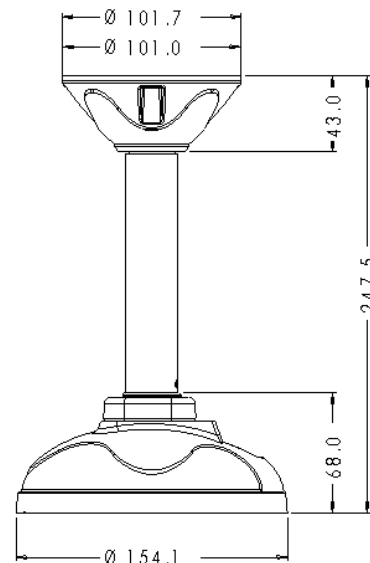
- MegaDome™ Series



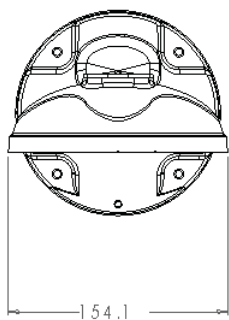
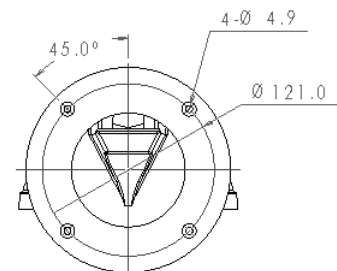
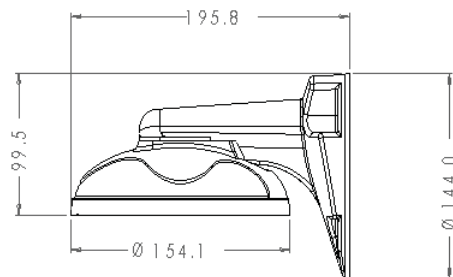
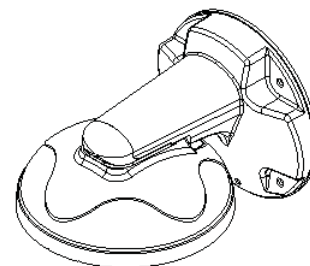
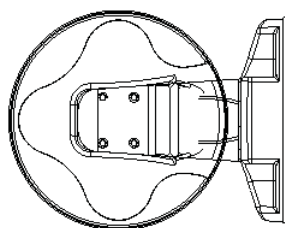
8-TAP #8-32



MD-CMT (Ceiling Mount)



MD-WMT (Wall Mount)



Made in USA

Arecont Vision
megapixel technology...
beyond imagination

Revised on 07/15/10