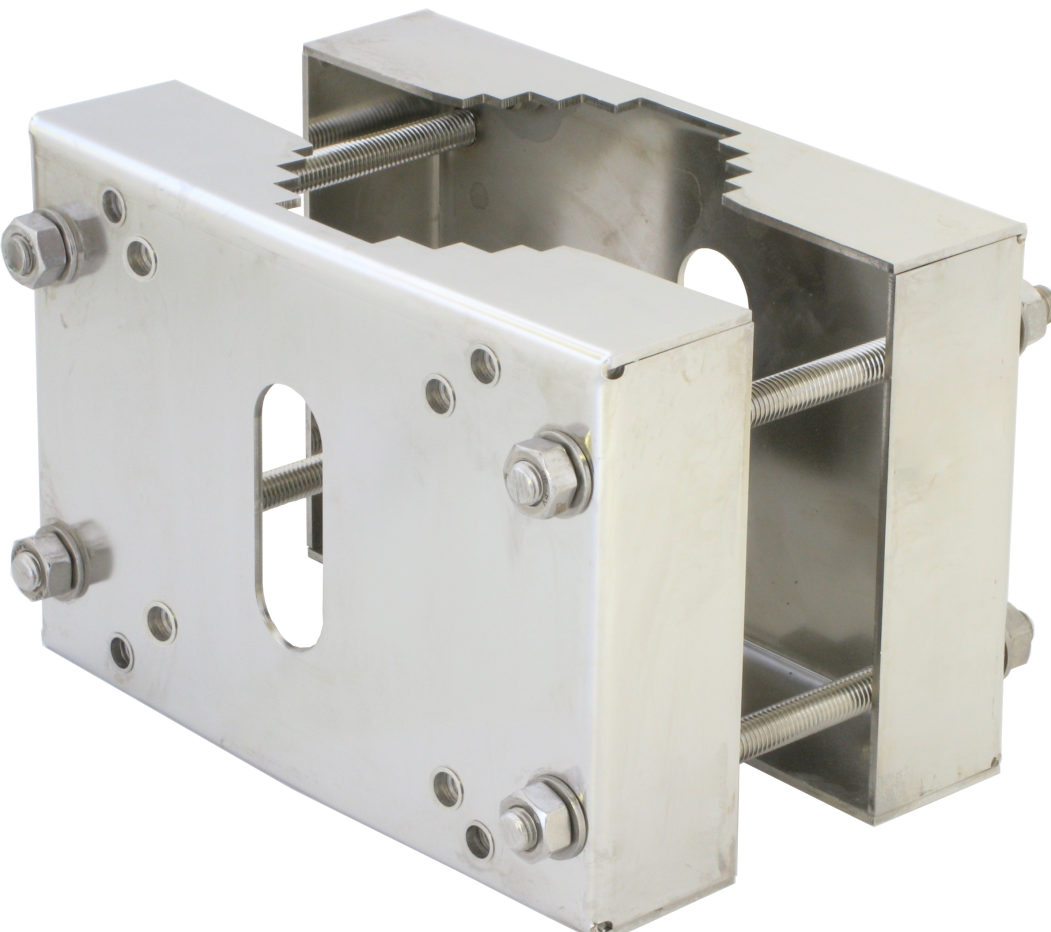


Ex Pole Mount XF40

Explosion-protected pole mount

Ex Pole Mount XF40 is an electropolished 316L stainless steel pole mount. Together with the required Ex Wall Mount XF40, it allows the fixed explosion-protected network cameras to be mounted on poles. It is designed for poles with a diameter between 90 to 120 mm (3.5 to 4.7 in) in diameter. The pole mount is ideal for onshore, offshore, marine and heavy industrial applications.

- > **Electropolish stainless steel finish (SS 316L)**
- > **For poles with 90-120 mm (3.5-4.7 in) in diameter**



General

Compatible products	Explosion-protected network cameras
Mounting	Ø90–120 mm (Ø3.5–4.7 in) poles
Material	Electropolish SS 316L stainless steel
Maximum load	55 kg (121 lb)
Dimensions	170 x 250 x 200 mm (6.7 x 9.8 x 7.9 in)
Weight	4.2 kg (9.3 lb)
Required accessories	Ex Wall Mount XF40
Warranty	Axis 3-year warranty, see www.axis.com/warranty

Environmental responsibility:

www.axis.com/environmental-responsibility