

**WISENET**

# **NETWORK VIDEO RECORDER**

Quick Manual

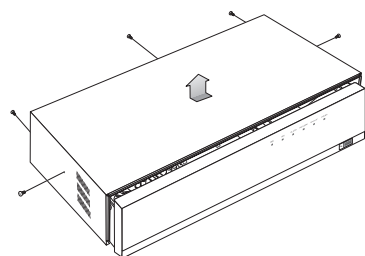
XRN-1610/2010/3010/2011



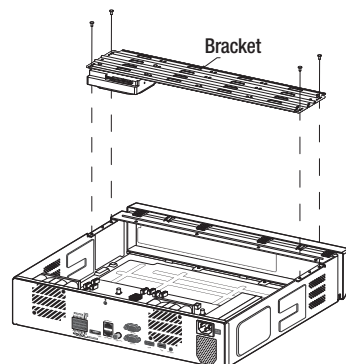
## HDD Installation

### XRN-1610/2010/3010

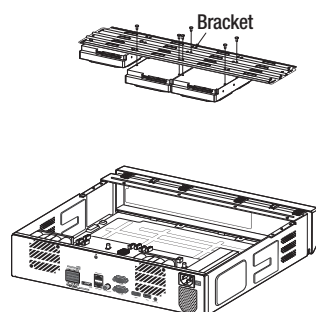
- 1** Remove the screws located on the left/right side and on the back side first, then remove the cover.



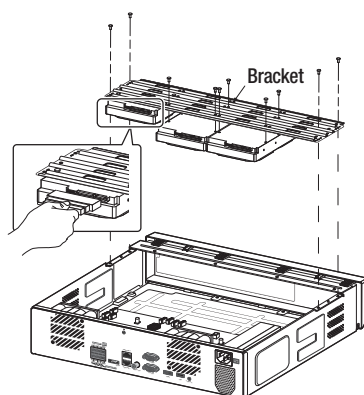
- 2** Remove the screws on the left/right side (4 screws) and remove the bracket.



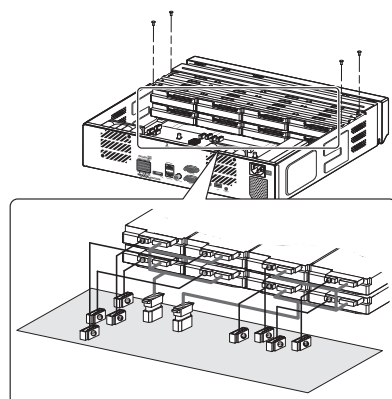
- 3** Mount HDDs to the bracket and fix it with screws.



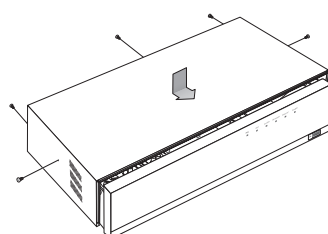
- 4** Connect the cable to the HDD by matching the HDD SATA/power cable number to the HDD position number on the bracket.



- 5** Mount the bracket on which an additional HDD is mounted on the NVR, secure it with screws and connect the SATA/power cable to the connector on the main board by matching the number.



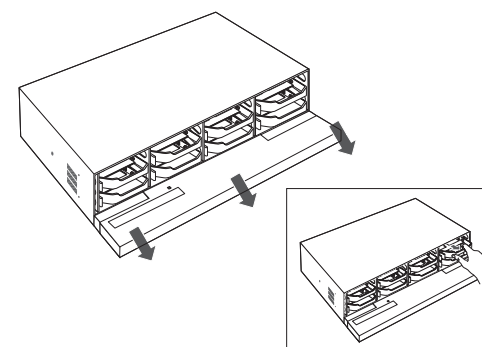
- 6** Check for any problems in the connection terminal and the wiring in the product, close the cover and fix it with screws.



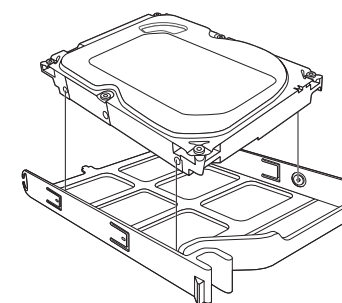
-  For Rack Installation, refer to "Rack Installation".

### XRN-2011

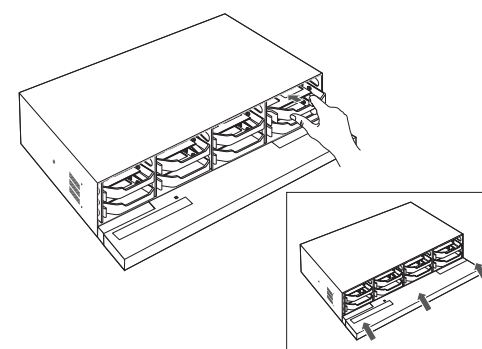
- 1** Open a front cover and push the latch to the right and remove



- 2** After inserting one side, push and insert the other side slightly

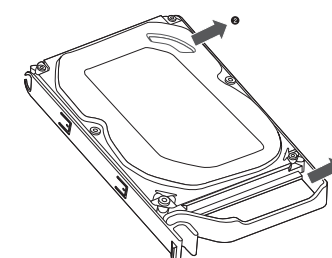


- 3** Align and push a bracket in the direction of the board



#### ※ How to exchange an installed HDD

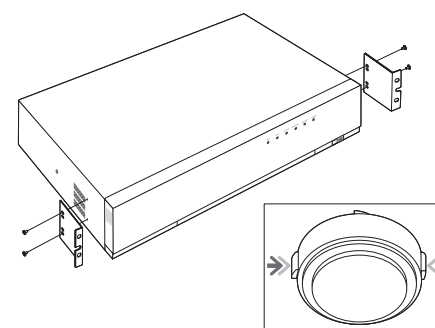
Open the other bracket wide and remove it from the holder



- !** If you are adding a new or previously used HDD to this product in addition to the HDD(s) originally installed, format the new HDD manually in the set before use.

#### ※ Rack Installation

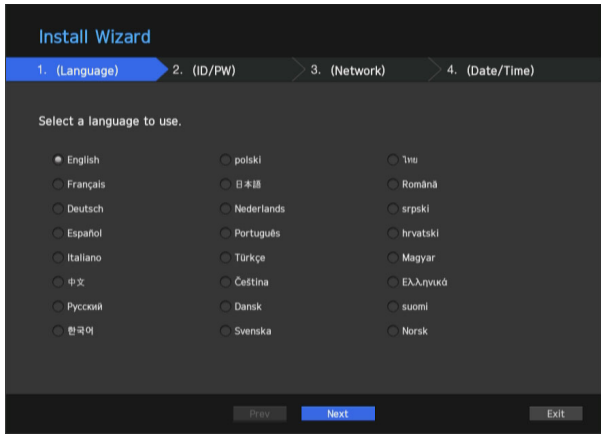
To install multiple NVRs in the rack, make sure to separate the foot (turn it counterclockwise)



# [ Installation ] Wizard

## 1 Select the language

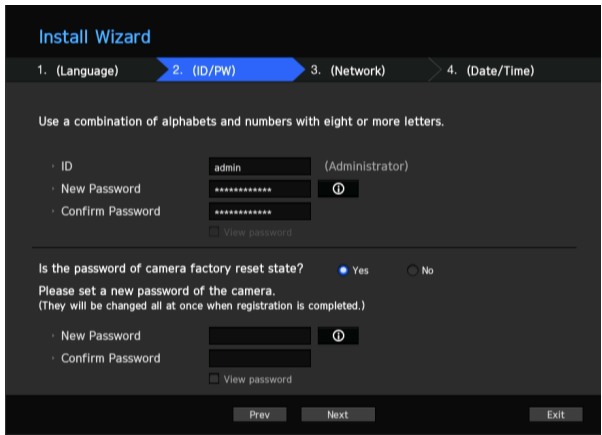
Language will be changed immediately



## 2 Set Password

Password rule must be applied

※ Click ⓘ icon to see the password rule



- 8 ~ 9 characters : All combination of English character, Digit, Special character
- 10 ~ 15 characters : Two combination of English character, Digit, Special character
- ※ Not allowed to use same characters with ID
- ※ Not allowed to use 4 or more continuative or repeated characters

### 2-1. Setting Camera Password

You can change the password of the camera enbloc if the camera password is in a factory reset state.

If the camera password is not in a factory reset state, please enter the password of the current camera to register the camera.

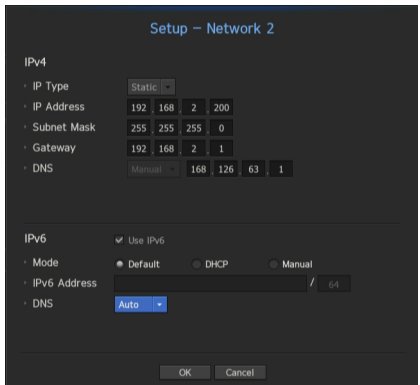
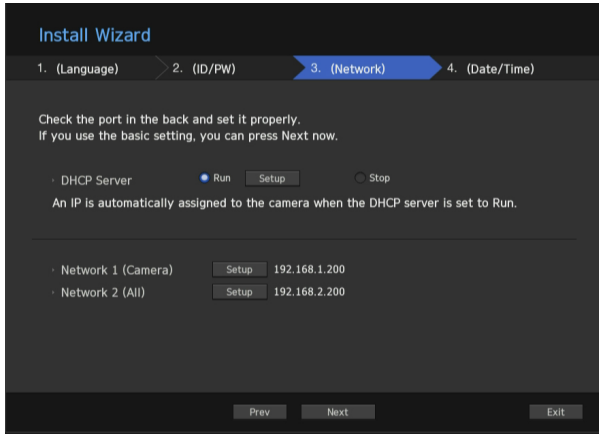
- New Password : Input a new password according to the password setting rules.
- Confirm Password : Input the new password again.
- A camera password registered with ONVIF and RTSP cannot be changed.

## 3 Set up Network

- DHCP server : If the DHCP server is set to enable, an IP is automatically assigned to the camera.
- Network 1 (Camera) : Connects to the camera and receives the video feed from the camera.
- Network 2 (All) : Network for a remote viewer (SSM, Smart Viewer, Webviewer)
- Network 1 / Network 2 Setup
  - IP Type : Choose the network connection method.
  - IP Address, Subnet Mask, Gateway, DNS

※ For more details on network settings, refer to the User manual.

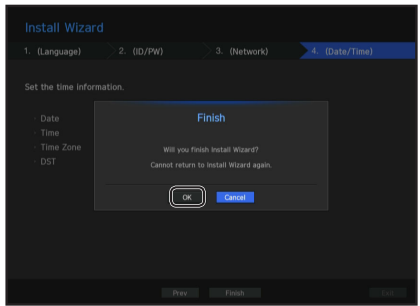
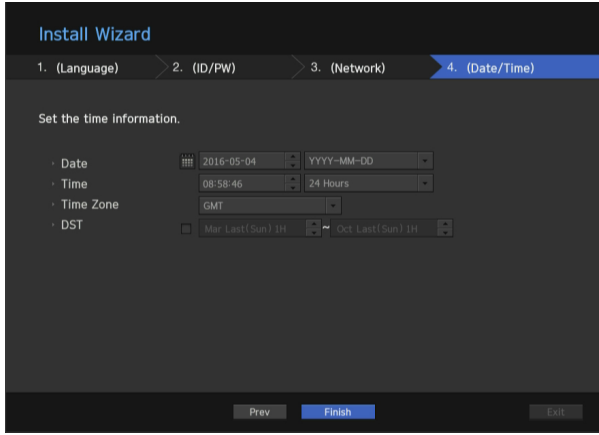
▶ To use a simple intranet, click <Next>.



## 4 Set Date & Time

## 5 Click <Finish> to finish Wizard

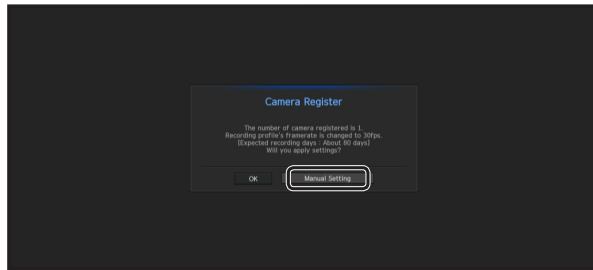
Camera Registration will be executed



## 6 Camera Registration

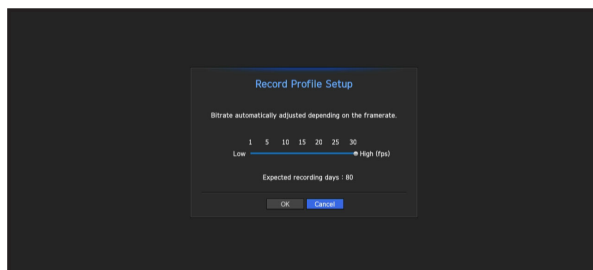
6-1. If there are \*16/\*32/\*64 or less cameras searched, it will be automatically registered and the camera information(fps, days of recording) will be displayed.  
(\*16 : XRN-1610, \*32 : XRN-2010/2011, \*64 : XRN-3010)

- ▶ choose <OK> to register automatically
- ▶ choose <Manual Setting> to adjust a framerate (go to 6-2.)



### 6-2. Adjust the recording framerate

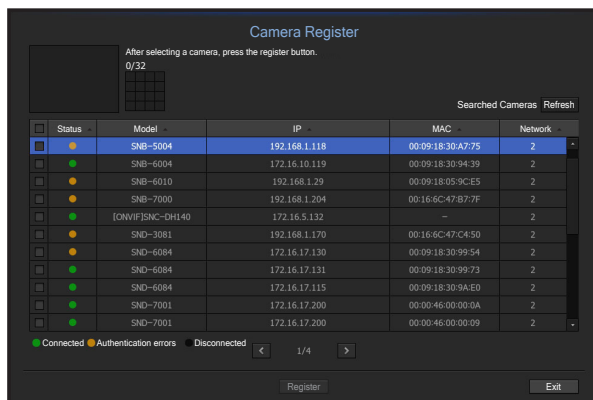
Recording day will be changed by framerate.



6-3. If there are more than \*16/\*32/\*64 cameras searched, Camera registration window will be displayed.  
(\*16 : XRN-1610, \*32 : XRN-2010/2011, \*64 : XRN-3010)

Select a camera to register and click the <Register> button. Once camera registration is finished, proceed in 6-1.

※ For an additional camera registration, refer to User manual.



## Package Contents

NVR	Mouse	Power Cable	Network Viewer Software / User Manual CD
User Manual or Quick Manual	Terminal block	Bracket Rack	Bracket Fixing Screw
HDD SATA/Power cable (N/A on XRN-2011)	HDD Fixing Screw (N/A on XRN-2011)		



Hanwha Techwin cares for the environment at all product manufacturing stages, and is taking measures to provide customers with more environmentally friendly products.

The Eco mark represents Hanwha Techwin's devotion to creating environmentally friendly products, and indicates that the product satisfies the EU RoHS Directive.



### Correct Disposal of This Product (Waste Electrical & Electronic Equipment)

(Applicable in the European Union and other European countries with separate collection systems)

This marking on the product, accessories or literature indicates that the product and its electronic accessories (e.g. charger, headset, USB cable) should not be disposed of with other household waste at the end of their working life. To prevent possible harm to the environment or human health from uncontrolled waste disposal, please separate these items from other types of waste and recycle them responsibly to promote the sustainable reuse of material resources.

Household users should contact either the retailer where they purchased this product, or their local government office, for details of where and how they can take these items for environmentally safe recycling.

Business users should contact their supplier and check the terms and conditions of the purchase contract. This product and its electronic accessories should not be mixed with other commercial wastes for disposal.



### Correct disposal of batteries in this product

(Applicable in the European Union and other European countries with separate battery return systems.)

This marking on the battery, manual or packaging indicates that the batteries in this product should not be disposed of with other household waste at the end of their working life. Where marked, the chemical symbols Hg, Cd or Pb indicate that the battery contains mercury, cadmium or lead above the reference levels in EC Directive 2006/66. If batteries are not properly disposed of, these substances can cause harm to human health or the environment.

To protect natural resources and to promote material reuse, please separate batteries from other types of waste and recycle them through your local, free battery return system.

---

### **Head Office**

6, Pangyo-ro 319 beon-gil, Bundang-gu, Seongnam-si,  
Gyeonggi-do, 463-400 Rep. of KOREA  
Tel : +82.70.7147.8753 Fax : +82.31.8018.3740  
<http://hanwha-security.com>

---

### **Hanwha Techwin America**

500 Frank W. Burr Blvd. Suite 43 Teaneck, NJ 07666  
Toll Free : +1.877.213.1222 Direct : +1.201.325.6920  
Fax : +1.201.373.0124  
[www.hanwhasecurity.com](http://www.hanwhasecurity.com)

---

### **Hanwha Techwin Europe**

Heriot House, Heriot Road, Chertsey, Surrey, KT16 9DT, United Kingdom  
Tel : +44.1932.57.8100 Fax : +44.1932.57.8101  
[www.hanwha-security.eu](http://www.hanwha-security.eu)

---

### **Hanwha Techwin(Tianjin) Co.Ltd**

No.11, Weiliu Rd., Micro-Electronic Industrial Park, Jingang Road Tianjin 300385, China  
Tel : +86.22.2388.7788  
[www.hanwha-security.cn](http://www.hanwha-security.cn)

---

### **Hanwha Techwin Middle East FZE**

JAFZA View 18, 20th floor, office 2001, 2002, 2003, Downtown Jebel Ali,  
Dubai, United Arab Emirates  
<http://hanwha-security.com>

---

