

# Quick Start Guide

## 04VLD5





- If the product does not work properly, please contact your dealer or the nearest service center. Never attempt to disassemble the camera yourself. Any unauthorized changes or modifications could void the warranty.
- Do not allow water or liquid intrusion into the camera.
- All installation and operation here should conform to local electrical safety codes. Make sure the device is firmly installed on the wall or ceiling.
- Do not use camera beyond specified voltage range.
- Do not drop the camera or subject it to physical shock.
- Avoid touching the camera lens.
- If cleaning is necessary, please use cleaning cloth to wipe it gently.
- Do not aim the camera at the sun or extremely bright light sources.
- Do not place the camera in extremely hot or cold environments and dusty and damp locations. Do not expose it to highly electromagnetic radiation.
- Do not block any ventilations.

## 2 Package

Available from A1 Security Cameras

[www.a1securitycameras.com](http://www.a1securitycameras.com) email: [sales@a1securitycameras.com](mailto:sales@a1securitycameras.com)



# A1 SECURITY CAMERAS

The First Name in Security



Camera

Quick start guide

4 tapping screws PA 4×35



CD



Drill template



Plastic plug ×4



Rubber plug

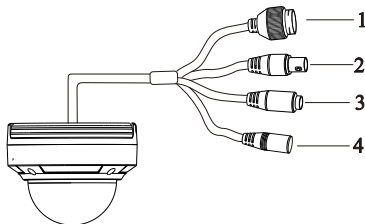


Junction box



Screwdriver

## 3 Overview



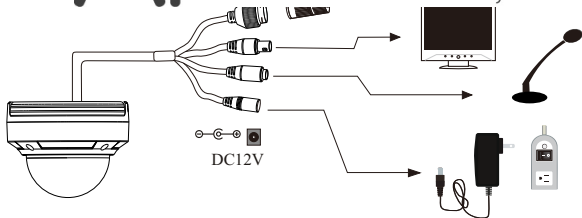
1	Mounting Base	3	MIC in connector
2	Ethernet connector	4	DC power connector

Available from A1 Security Cameras

[www.a1securitycameras.com](http://www.a1securitycameras.com) email: [sales@a1securitycameras.com](mailto:sales@a1securitycameras.com)

# A1 SECURITY CAMERAS

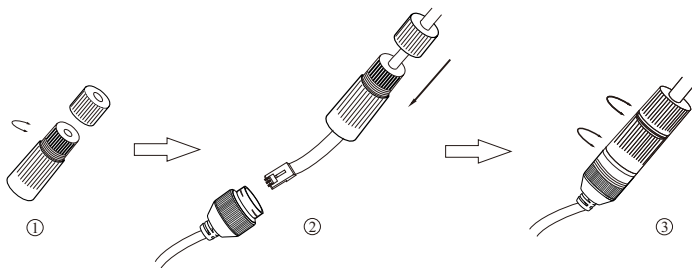
Security Cap  
The First Name in Security



\* 1 It is recommended to install the security cap for outdoor installations.

\* 2 DC 12V power supply is not required if a PoE switch or injector is used to power the camera.

## ► Connecting Network Cable



① Loosen the nut from the main element.

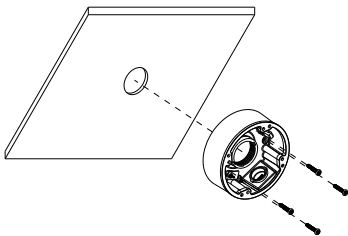
② Run the network cable (without RJ 45 connector) through both elements. Then crimp the cable with RJ 45 connector.

③ Connect the cable to the hermetic connector. Then tighten the nut and the main cover.

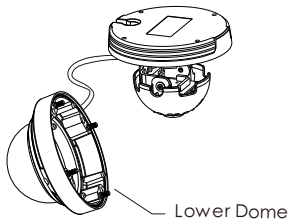


\* Before you start, please make sure that the wall or ceiling is strong enough to withstand three times the weight of the camera.

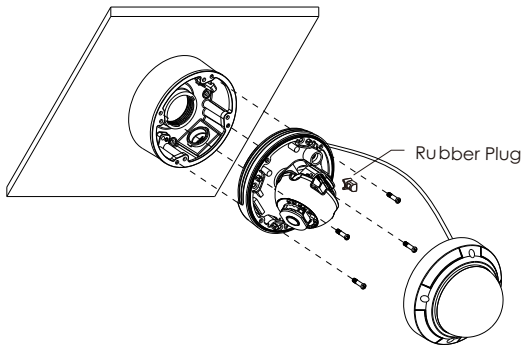
- ① Install junction box onto the wall by using the screws provided.



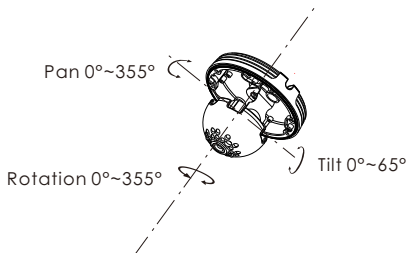
- ② Loosen the screws to open the lower dome.



- ③ Connect the cables, mount the rubber plug to the gap of the mounting base and fasten the camera onto the junction box.



- ④ Three-axis Adjustment-Before adjustment, preview the image of the camera on a monitor and then adjust the camera according to the figure below to get an optimum angle.



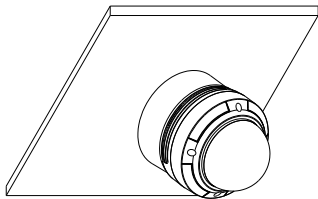
⑤ Install the



**SECURITY CAMERAS**

1 the screws.

The First Name in Security



## 5 Web Operation and Login

IP Scanner can search for the device on the local network.

### ● Operation

- ① Make sure that the camera and the PC are connected to the same local network. The camera is set to DHCP by default.
- ② Install IP Scanner from the CD and run it after installation.



③ In the device list, you can view the IP address, model number, and MAC address of each device. Select the applicable device and double click to open up the web viewer. You can also manually enter the IP address in the address bar of the web browser.

The login interface features the 'speco technologies' logo at the top. Below the logo, there are two input fields: 'Username' and 'Password'. At the bottom of the form, there are two buttons: 'Login' and 'Cancel'.

The login interface is shown above. Default user name is admin and password is 1234. After logging in, follow directions to install applicable plugins.