

# Blackjack<sup>®</sup> NAS

Network Attached Storage

Non-RAID	RAID1
DW-BJNAS4T	DW-BJNAS8TR
DW-BJNAS6T	DW-BJNAS12TR
DW-BJNAS8T	DW-BJNAS16TR
DW-BJNAS10T	DW-BJNAS20TR
DW-BJNAS12T	
DW-BJNAS16T	
DW-BJNAS20T	



Default login Information for Blackjack<sup>®</sup> NAS<sup>™</sup>

Username : **admin**

Password : **admin1234**

## WHAT'S IN THE BOX

12V DC Adapter &  
Power Cable



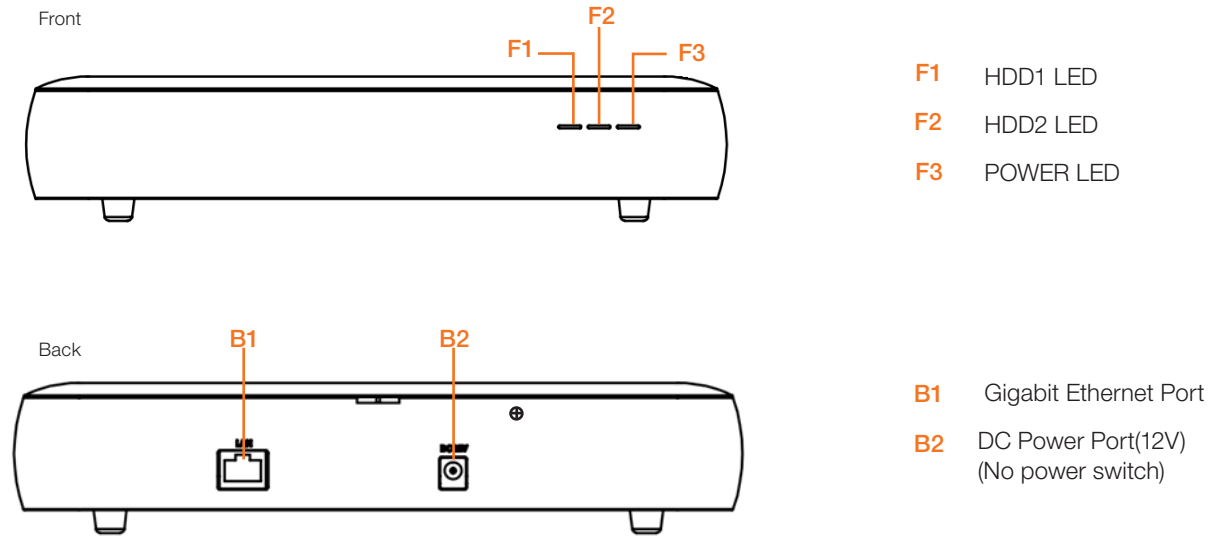
1 Set

**NOTE:** Download All Your Support Materials and Tools in One Place

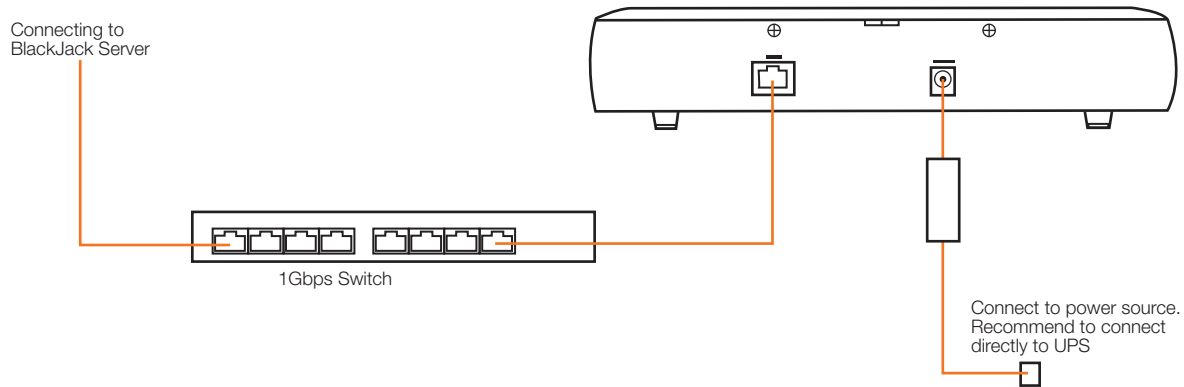
1. Go to: <http://www.digital-watchdog.com/support-download/>
2. Search you product by entering the part number in the 'Search by Product' search bar. Results for applicable part numbers will populate automatically based on the part number you enter.
3. Click 'Search'. All supported materials, including manuals, Quick Start Guide (QSG), software and firmware will appear in the results.

**Attention:** This document is intended to serve as a quick reference for initial set-up.  
See the DW Spectrum full manual for more information on features and functionality.

## HARDWARE



## SETTING UP THE BLACKJACK<sup>®</sup> NAS



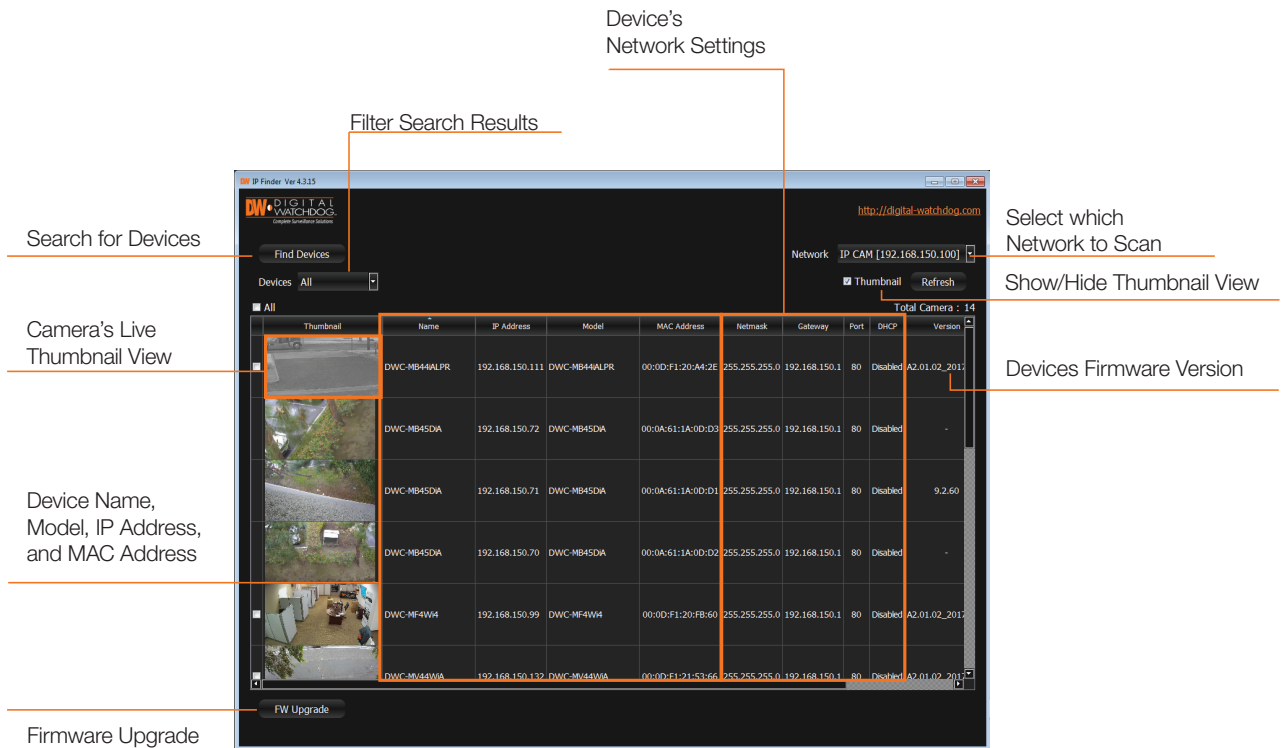
### STEP 1: Connecting the power cable.


1. Connect the power cable to the DC power port. The device will automatically power on.
2. You can check whether the power is on at the front power LED.

## STEP 2: Connecting to the Network

1. Locate the network switch where the DW Spectrum<sup>®</sup> IPVMS server is connected to.  
(Blackjack<sup>®</sup> NAS must be on the same network as the DW Spectrum<sup>®</sup> IPVMS server where it will be added to).
2. Connect the network cable to the network port and to the network switch. (network cable not included).

**NOTE** It is required to use Gigabit switch for stable storage performance



1. From the Windows based Blackjack<sup>®</sup> server or any Windows<sup>®</sup> PC, open DW IP Finder<sup>™</sup> by double click on the DW IP Finder<sup>™</sup> icon  on the Desktop or click on DW IP Finder<sup>™</sup> from Start Menu > All Programs > DW IP Finder.
2. If the DW IP Finder<sup>™</sup> is not installed or not the latest version, download and install from <http://digital-watchdog.com/support>.
  - Under Software, select DW IP Finder<sup>™</sup> from the dropdown list.
  - Then go to downloads section and expand software/firmware.
  - Click on the download icon to download the DW IP Finder<sup>™</sup>.
  - Then install the DW IP Finder<sup>™</sup> by following the installation wizard.

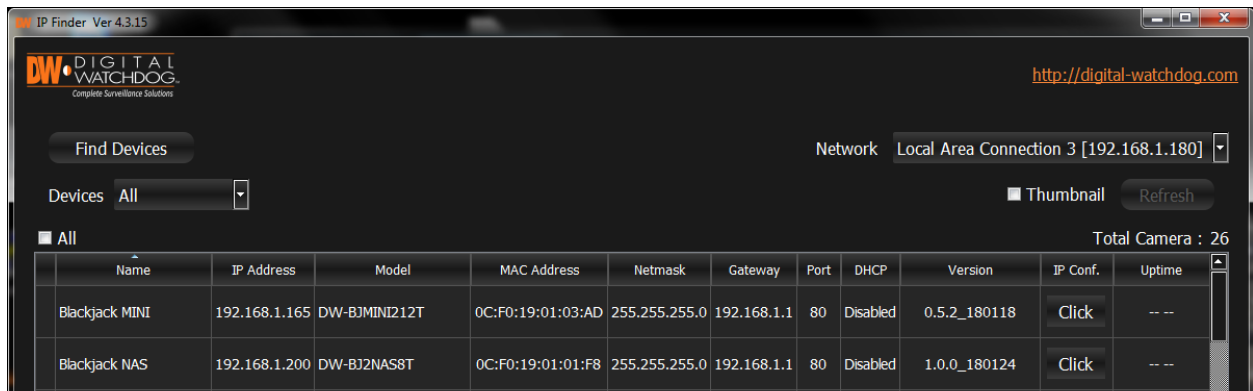
\* Requires DW IP Finder<sup>™</sup> 4.3.15 or later version.
3. When the DW IP Finder<sup>™</sup> is opened, it will scan and list all the DW cameras and Blackjack<sup>®</sup> NAS that are on the selected network.

4. If the Blackjack<sup>®</sup> NAS is not listed, change the Network\* by clicking the drop down and select another network if exist. Then click **Find Devices** to scan the network for the Blackjack<sup>®</sup> NAS.

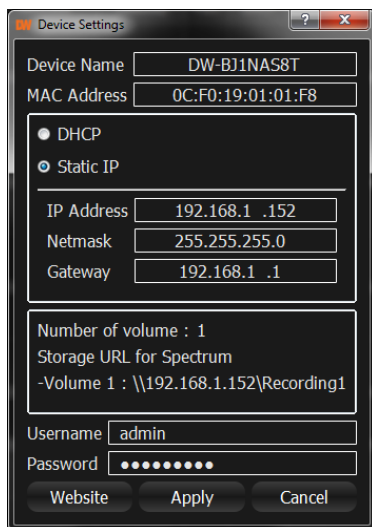
- If it's showing incorrect network, select the correct network from the dropdown list.



5. Find the Blackjack<sup>®</sup> NAS from the list, then either double click on the **Blackjack NAS** or click on the **Click** under the IP Conf column.



6. From the Device Settings, enter IP address, netmask and gateway then click Apply to save changes.

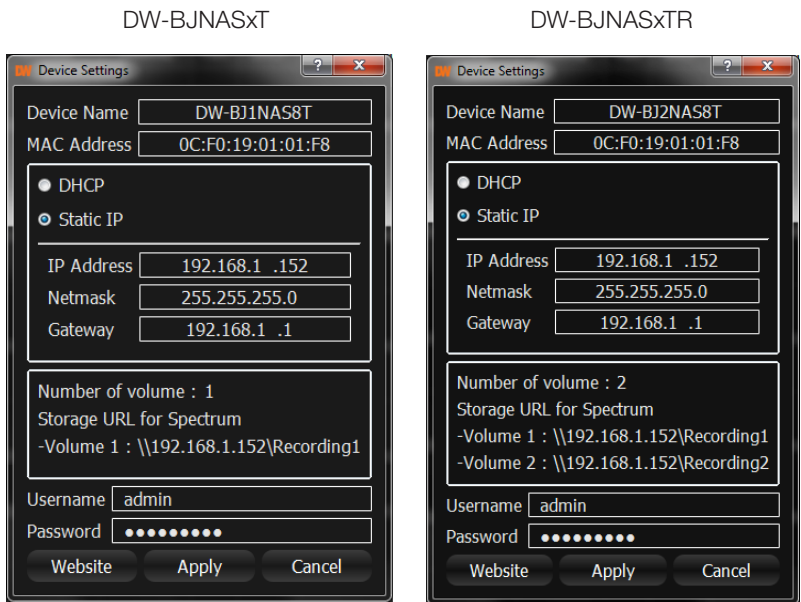


**NOTE:** Default IP Info

IP Address: 192.168.1.200,  
 Subnetmask: 255.255.255.0  
 Gateway:192.168.1.1


\* Consult with your IT or network administrator If you do not have IP information.

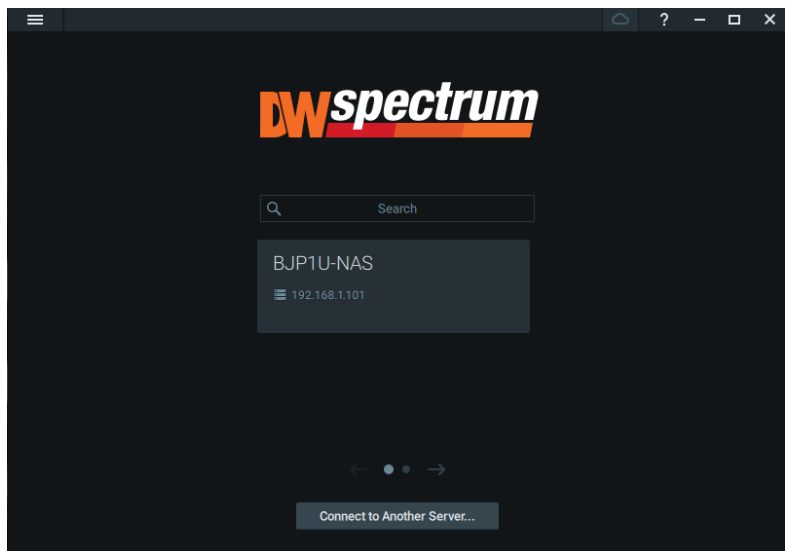
- Once the new IP have been applied, reopen the Device Settings to verify the Storage URL for the DW Spectrum<sup>®</sup> IPVMS.
  - Note the Storage URL for the DW Spectrum<sup>®</sup> IPVMS as you will need to type it in the DW Spectrum<sup>®</sup> IPVMS.



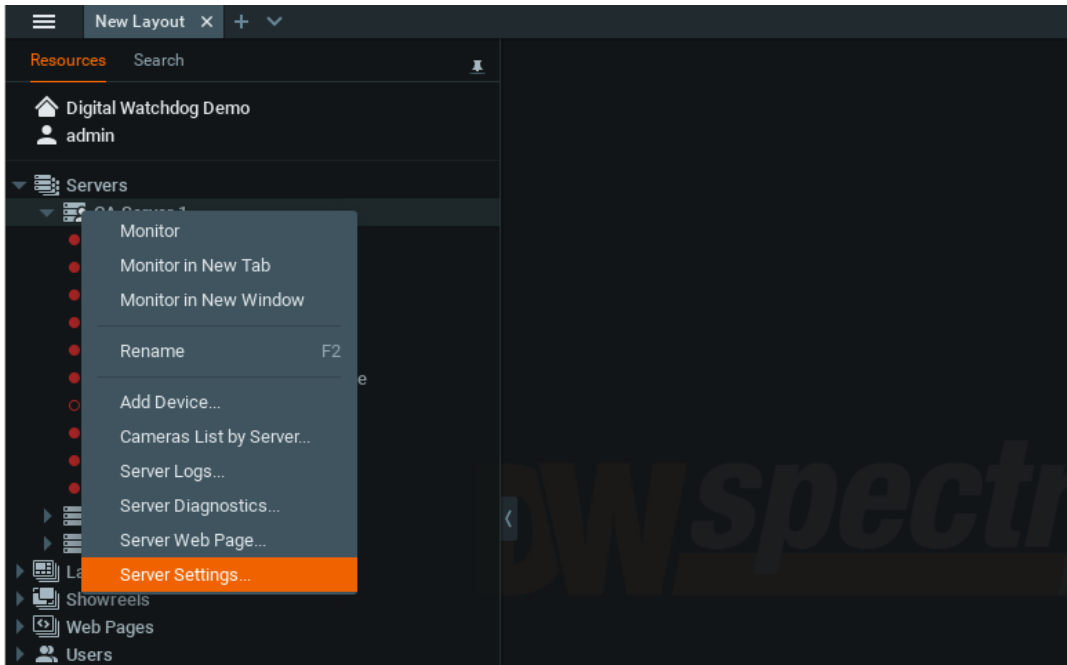
- Click the Apply or Cancel to close the window.

## ADD STORAGE TO DW SPECTRUM<sup>®</sup> MEDIA SERVER

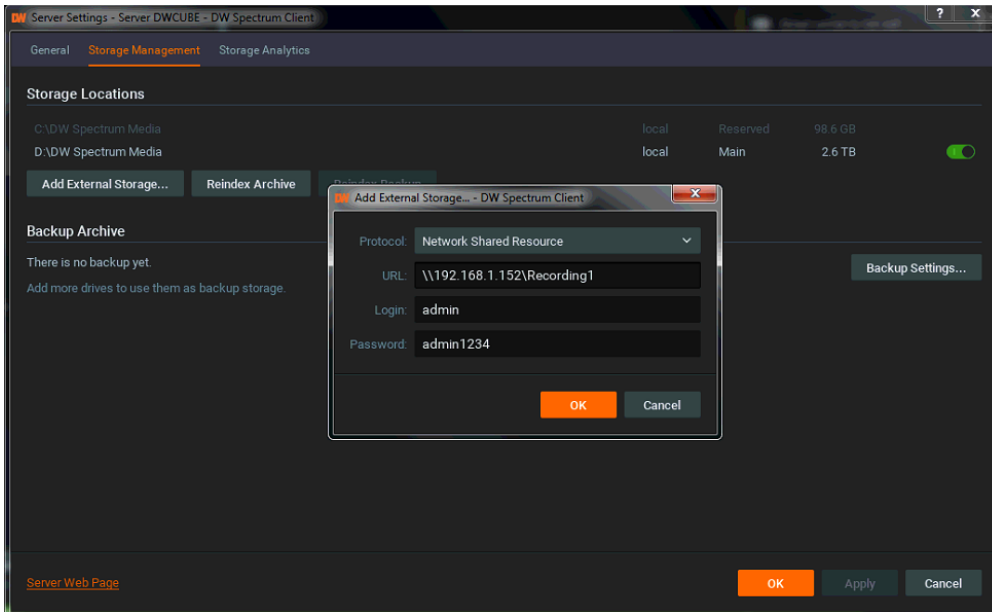
- Open DW Spectrum Client by double click on the DW Spectrum<sup>®</sup> IPVMS icon  on the Desktop or click on DW Spectrum from Start > All Program > Digital Watchdog.
- Login to the server where the Blackjack<sup>®</sup> NAS will be connecting to.



- Right click on the server name listed on the Resources then click Server Settings.



4. From Storage Management tab, click Add External Storage.



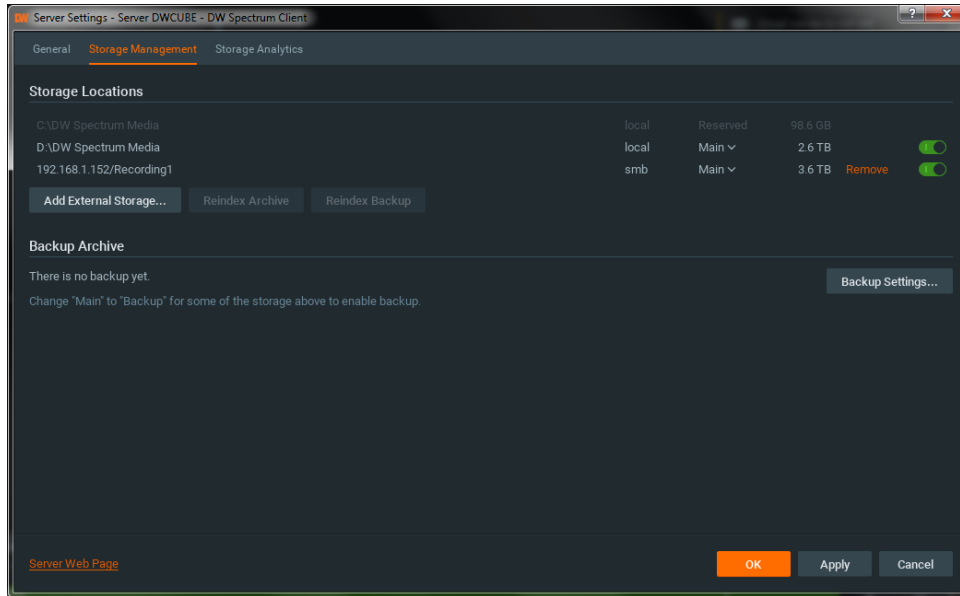
5. Input the URL of volume 1 from Step3-7

E.g. \\192.168.1.152\Recording1

6. Input the login name and the password then click OK.

**NOTE:** Default login Information

Login : admin, Password: admin1234



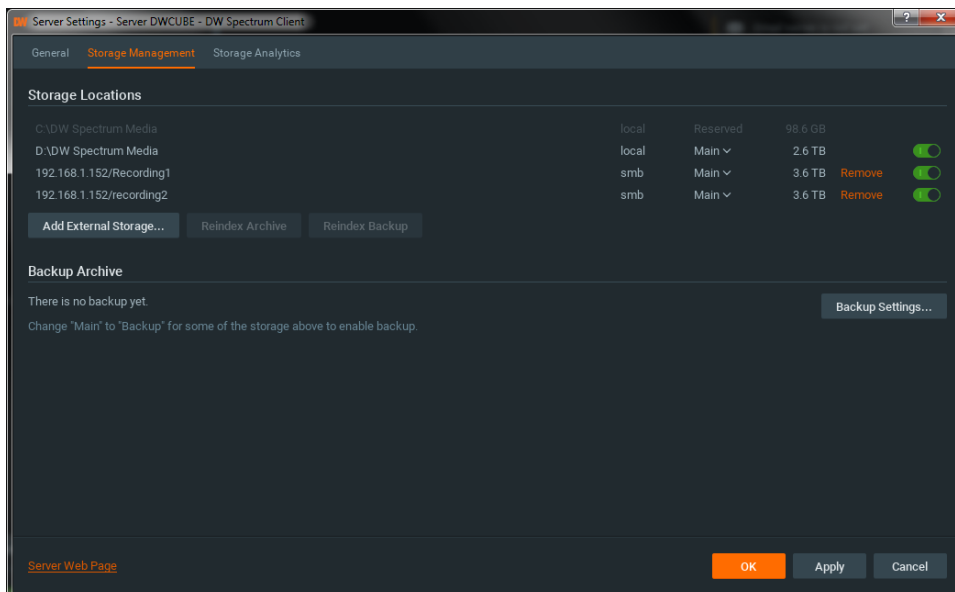
7. Select storage type as either Main or Backup. (Refer to the DW Spectrum<sup>®</sup> IPVMS manual for detail information of the storage type)

8. If you are adding a Blackjack<sup>®</sup> NAS model with 2 volumes, you can add the second volume by repeating 3 ~6.

**E.g.** URL : \\192.168.0.152\Recording2

Login : admin

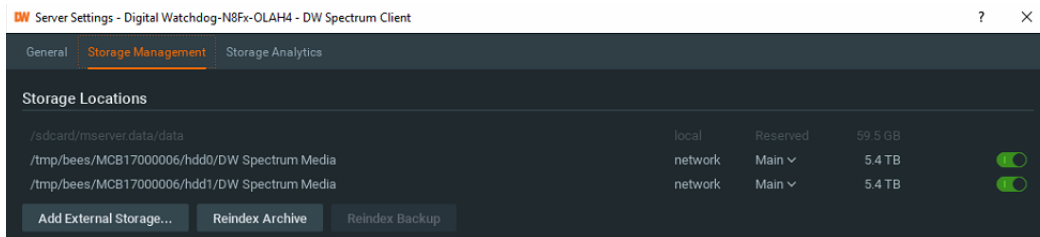
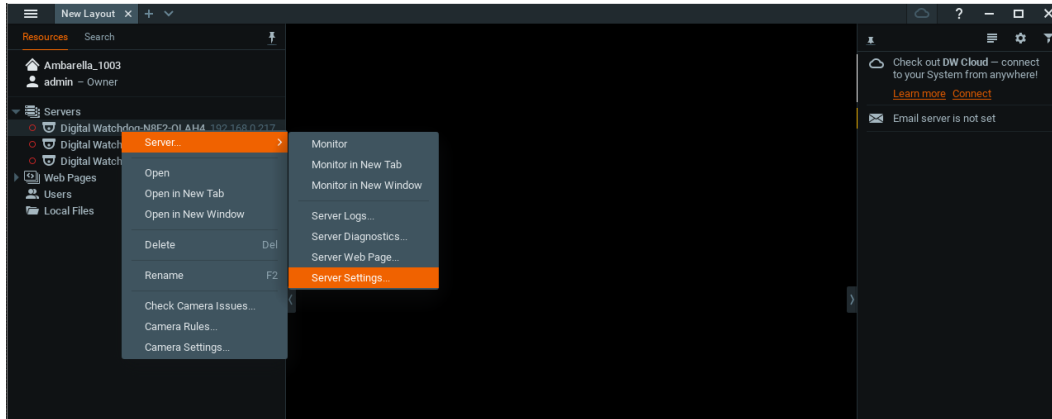
Password : admin1234



9. Click Apply or OK to save the changes

## CONFIGURE STORAGE FOR CAAS

CAAS Cameras will detect the Blackjack<sup>®</sup> NAS if it's on the same network and add to the Storage Location automatically.



1. Enable the NAS storage
2. Select storage type as either Main or Backup.
  - \*If the Blackjack<sup>®</sup> NAS is set as Main storage, the SD card will be disabled
  - \*If the Blackjack<sup>®</sup> NAS is set as Backup, the SD card will be set as main.
3. Go to the Camera Setting and enable recording if it is not enabled.
  - \* Refer to the MEGApix<sup>®</sup> CaaS<sup>™</sup> QSG or manual for enabling the recording.

## REQUIREMENTS

1. Network : 1Gbps network.
2. CAAS : 2nd generation MEGApix<sup>®</sup> CaaS<sup>™</sup>.
3. DW Spectrum<sup>®</sup> IPVMS server : DW Spectrum<sup>®</sup> IPVMS 2.6 or later.

Tel: +1 (866) 446-3595  
 Fax: (813) 888-9262



www.digital-watchdog.com  
 sales@dwcc.tv