

Quick Installation Guide for PMAX-0333

The PMAX-0333 is a wall mount mounting kit for the A8x series.

Package Content:

Wall Mount	Mount Kit	Mount Kit Adapter	Adapter Screws	Mount Kit Screws	Wall Mount Screws	Rubber Gasket
						

Installation Instructions:

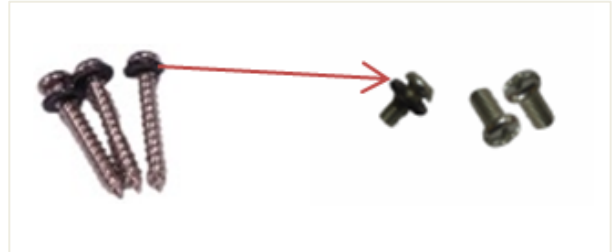
1. Prepare the camera

- a) Make sure to attach the metal cap that came with the camera on the side conduit hole.

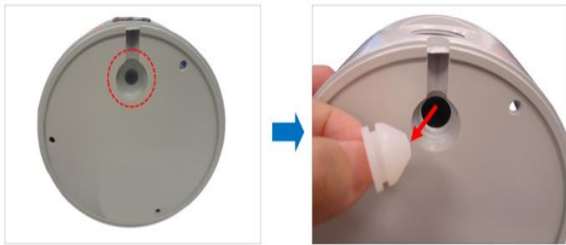


Note: Ensure the metal cap is tightly secured to avoid possible water leak.

- b) Remove the (3) O-Rings from the screws that came with the camera and put the O-Rings on the (3) mount kit screws.



- c) Remove the rubber from the bottom cable hole of the camera.



- d) Slightly cut off the tip of the rubber, just enough for the rubber to expand and let the Ethernet cable to pass through.



- e). Insert the rubber back into the camera bottom hole.



2. Run the cable (without adapter) through the wall mount and secure the wall mount to the wall using the (4) wall mount screws.



3. Screw the mount kit adapter to the mount kit



4. Place the rubber gasket into the groove going around the mount kit.



5. Run the cable through the mount kit.



Note: Make sure there is enough cable length to go through the mount kit to reach the camera Ethernet port.

6. Insert the Ethernet cable without the connector through the camera rubber.



7. Once the cable length is determined (able to reach camera Ethernet port), seal the bottom cable hole with silicone to protect it from water leak.



8. Place the camera on the rubber gasket and make sure the base screw holes align with the mount kit.



9. Mount the camera onto the mount kit using the mount kit screws (with camera O-Rings) and seal the screws with silicone to protect it from water leak.



10. Attach the RJ-45 connector to the Ethernet cable (see How to Attach the RJ-45 Connector in camera manual for detailed information).



11. Connect the Ethernet cable to the Ethernet port of the camera.



12. Secure the mount kit to the wall mount using the (3) screws.



Note: Try to not twist the cable too much

13. Based on the live view, adjust the viewing angle and orientation of the camera.



Note: Loosen the two tilt adjustment screws and then tilt the camera to desired angle. Tighten the tilt adjustment screws to fix the lens position.

14. Replace the cover.

