

# SHD-317F INSTRUCTIONS

(PNM-9080VQ, PNM-9081VQ Indoor Flush Mount)

## DESCRIPTION

The SHD-317F Kit provides an economical, integrated solution for any indoor suspended ceiling application for Hanwha PNM-9080VQ and PNM-9081VQ multi-directional cameras. Like all Wren products, it is designed for quick, simple installation and servicing.

## SUGGESTED INSTALLATION EQUIPMENT

- Phillips Head Screwdriver

## COMPONENT LIST [FIGURE 1]

- A. Safety Tether (4)
- B. Ceiling Tile Support Plate
- C. 8-32 x 1/2" Pan Head Screws (4)

## INSTALLATION

1. Carefully unpack box and verify that all components listed in the component list are included.
2. Remove Ceiling Tile Insert (D) and set aside.
3. Remove tile from desired mounting location.
4. Attach Ceiling Tile Support Plate (B) to ceiling tile grid, the tabs will slip down over the grid edge as seen in [FIGURE 2].
5. Attach the 4 safety tethers (A) to the red iron.
6. Mount the camera onto the Ceiling Tile Support Plate (B) using the included #8-32 x 1/2" screws (C) (See Camera Installation Instructions).
7. Make all camera connections.
8. Lift camera/bracket assembly back off of the grid and drop in the ceiling tile insert, then replace assembly back on to the grid as seen in [FIGURE 3].

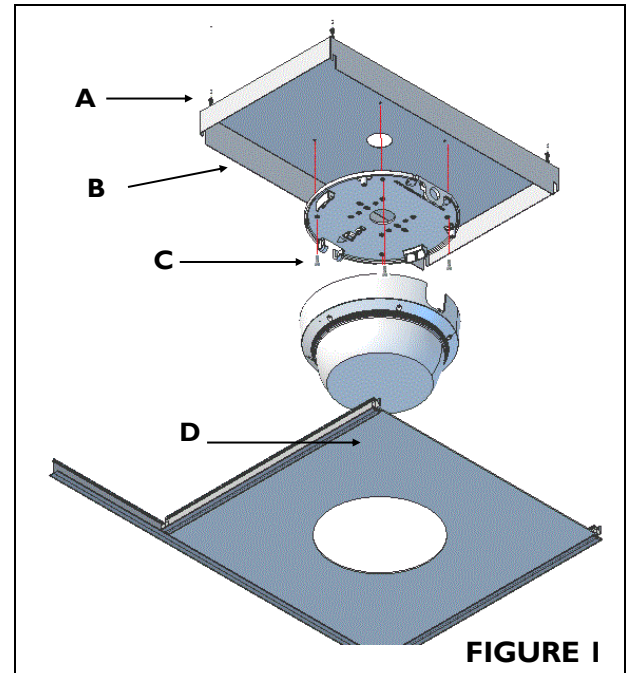
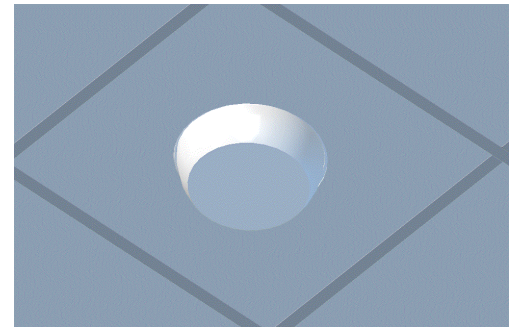


FIGURE 1

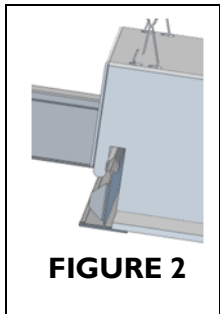


FIGURE 2

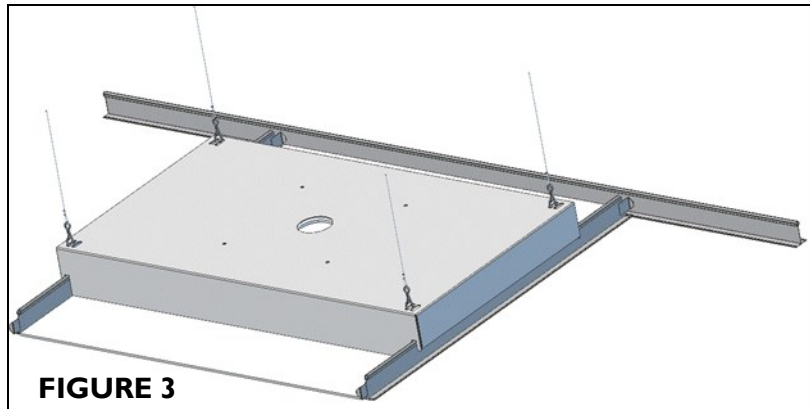


FIGURE 3

## MECHANICAL PROPERTIES

- Support unit: Steel
- Lower unit: ABS Ceiling Tile
- Unit weight: 7.3 lbs without camera

## ENVIRONMENT

- Indoor

