



# Quick Start Guide

## *GV-Fisheye IP Camera*



Thank you for purchasing GV-Fisheye IP Camera. This guide is designed to assist the new user in getting immediate results from the GV-Fisheye IP Camera. For advanced information on how to use the GV-Fisheye IP Camera, please refer to *GV-Fisheye IP Camera User's Manual* online.



© 2021 GeoVision, Inc. All rights reserved.

Under the copyright laws, this manual may not be copied, in whole or in part, without the written consent of GeoVision.

Every effort has been made to ensure that the information in this manual is accurate. GeoVision, Inc. makes no expressed or implied warranty of any kind and assumes no responsibility for errors or omissions. No liability is assumed for incidental or consequential damages arising from the use of the information or products contained herein. Features and specifications are subject to change without notice.

GeoVision, Inc.  
9F, No. 246, Sec. 1, Neihu Rd.,  
Neihu District, Taipei, Taiwan  
Tel: +886-2-8797-8377  
Fax: +886-2-8797-8335  
<http://www.geovision.com.tw>

Trademarks used in this manual: *GeoVision*, the *GeoVision* logo and *GV* series products are trademarks of GeoVision, Inc. *Windows* is the registered trademark of Microsoft Corporation.

October 2021

**Scan the following QR codes for product warranty and technical support policy:**



[Warranty]



[Technical Support Policy]

# Contents

<b>Caution .....</b>	<b>iii</b>
<b>Creating GV-IP Camera's Login Credentials .....</b>	<b>iv</b>
<b>Note for USB Storage and WiFi Adapter.....</b>	<b>v</b>
<b>Note for Installing Camera Outdoor.....</b>	<b>vi</b>
<b>Note for Silica Gel Bags.....</b>	<b>vii</b>
<b>Note for Waterproofing Failures (GV-UNFE2503).....</b>	<b>vii</b>
<b>Optional Accessories.....</b>	<b>viii</b>
<b>1. Introduction .....</b>	<b>1</b>
1.1 Packing List .....	2
1.2 Overview.....	7
<b>2. Installation .....</b>	<b>12</b>
2.1 Hard-Ceiling Mount.....	13
2.1.1 General Hard-Ceiling Mount.....	13
2.1.2 GV-FER5700 / 5701 / 12203 / 12700 .....	16
2.1.3 GV-EFER3700 / EFER3700-W .....	20
2.1.4 Waterproofing the Cable .....	21
2.2 In-Ceiling Mount .....	23
2.2.1 General In-Ceiling Mount .....	23
2.2.2 GV-UNFE2503.....	26
2.3 Wall Mount and Ground Mount .....	30
<b>3. Connecting the Camera .....</b>	<b>31</b>
3.1 GV-FER5700 / 5701 / 12203 / 12700.....	31
3.2 GV-EFER3700 / EFER3700-W .....	31
<b>4. Accessing the GV-Fisheye Camera.....</b>	<b>33</b>
4.1 Web Browser .....	33
4.2 Looking Up the Dynamic IP Address.....	34
4.3 Configuring the IP Address .....	35
4.4 Configuring the Wireless Connection .....	37
<b>5. The Web Interface.....</b>	<b>39</b>
5.1 Fisheye View .....	40
<b>6. Upgrading System Firmware .....</b>	<b>42</b>

- 7. Restoring to Factory Default.....43**
- 7.1 Using the Web Interface .....43
- 7.2 Directly on the Camera.....43

## Caution


This caution is only for GV-EFER3700-W.

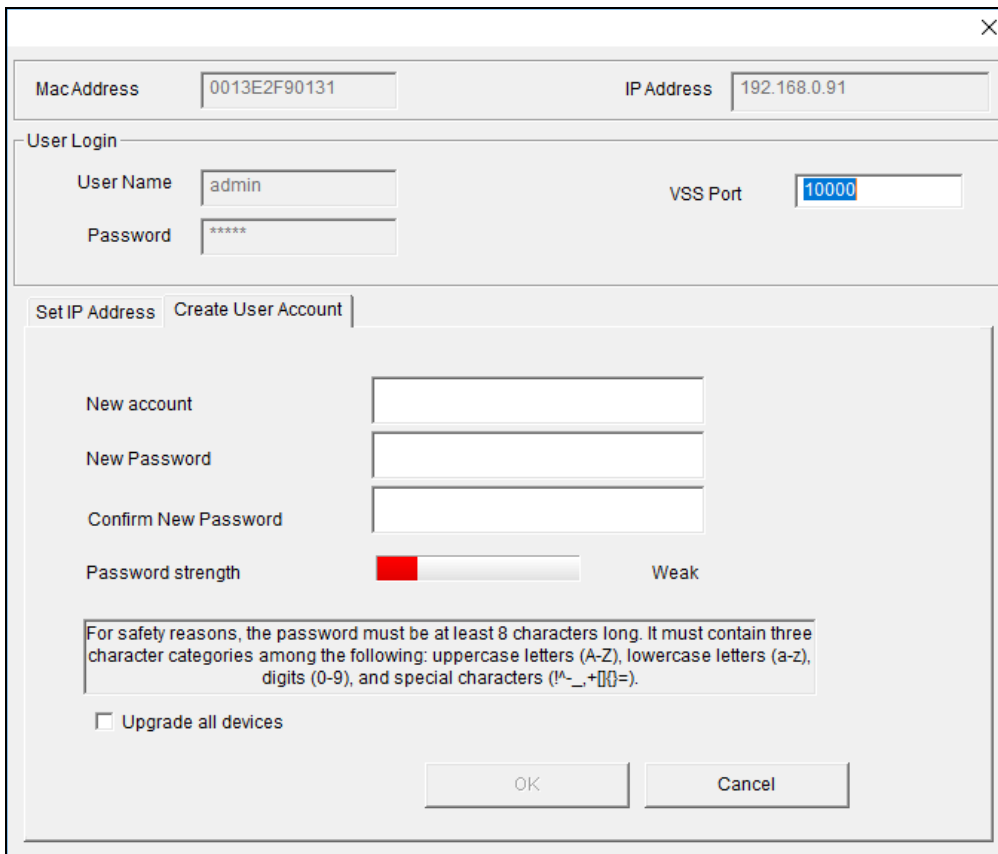
This device complies with Part 15 of the FCC Rules. Operation is subject to the following two conditions:

1. This device may not cause harmful interference, and
2. This device must accept any interference received, including interference that may cause undesired operation

## Creating GV-IP Camera's Login Credentials

The default **Administrator** and **Guest** accounts are not supported by the latest firmware anymore. After purchasing a new camera or applying factory defaults, you need to set up a login username and password for that camera.

1. Download and install GV-IP Device Utility from the company [website](#).
2. On the GV-IP Device Utility window, click  to search for your GV-IP camera.
3. Double-click your GV-IP camera in the GV-IP Device Utility list. This dialog box appears.



The screenshot shows a dialog box titled "GV-IP Device Utility" with a close button (X) in the top right corner. The dialog is divided into several sections:

- MacAddress:** 0013E2F90131
- IP Address:** 192.168.0.91
- User Login:** Includes fields for "User Name" (admin) and "Password" (\*\*\*\*\*), and a "VSS Port" field (10000).
- Set IP Address / Create User Account:** This section is currently active. It contains:
  - Fields for "New account", "New Password", and "Confirm New Password".
  - A "Password strength" indicator showing a red bar and the word "Weak".
  - A text box with the following text: "For safety reasons, the password must be at least 8 characters long. It must contain three character categories among the following: uppercase letters (A-Z), lowercase letters (a-z), digits (0-9), and special characters (!^\_+[]{}=)."
  - An unchecked checkbox labeled "Upgrade all devices".
  - "OK" and "Cancel" buttons at the bottom.

4. Click the **Create User Account** tab and type a username and password. Note that the new password must meet the password strength requirements.
5. Optionally click **Upgrade all devices** to use the same username and password on all other devices that do not yet have login credentials.

## Note for USB Storage and WiFi Adapter

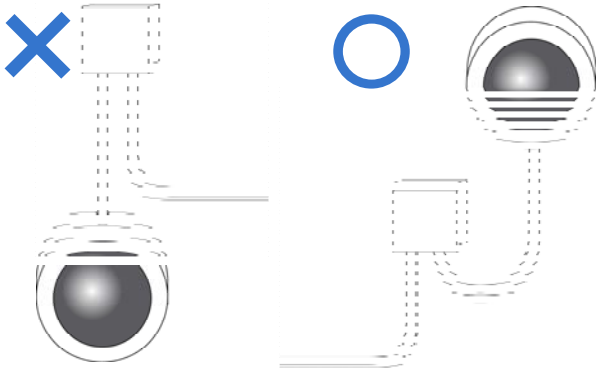
Mind the following limitations and requirements for using USB storage and GV-WiFi Adapter V2:

1. The USB hard drive must be of 2.5" or 3.5", version 2.0 or above.
2. The USB hard drive's storage capacity must not exceed 2TB.
3. USB flash drives and USB hubs are not supported.
4. External power supply is required for the USB hard drive.
5. To connect a GV-WiFi Adapter V2, make sure it is connected before the camera is powered on.

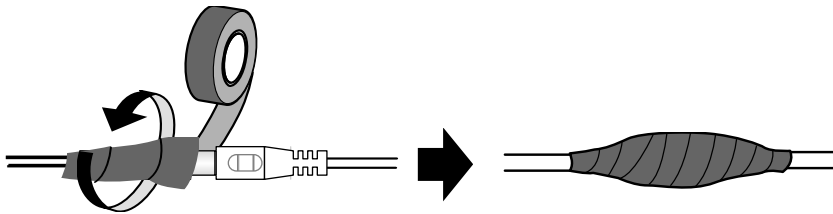
## Note for Installing Camera Outdoor

When installing GV-FER outdoor models, be sure that:

1. The camera is set up above the junction box to prevent water from entering the camera along the cables.



2. Any PoE, power, audio and I/O cables are waterproofed using waterproof silicon rubber or the like.



3. The screws are tightened and the cover is in place after opening the camera cover.



4. An operating IR LED ring may reach high temperatures of up to 60°C (140°F). Disconnect the power supply and allow the IR LED ring to cool down before handling the device.



## Note for Silica Gel Bags

The silica gel bag loses its effectiveness when the dry camera is opened. To prevent the lens from fogging up, use the supplied adhesive tap and replace the silica gel bag every time you open the camera, and conceal the gel bag in camera within 2 minutes of exposing to open air.

## Note for Waterproofing Failures (GV-UNFE2503)

To avoid waterproofing failures for GV-UNFE2503, do not open the two screws on the camera lens.



## Optional Accessories

Optional devices can expand the capabilities and versatility of your GV-Fisheye Camera. Contact your dealer for more information.

Name	Details
<b>GV-Mount Accessories</b>	The GV-Mount Accessories provides a comprehensive lineup of accessories for installation on ceiling, wall and pole. For details, see <i>GV-Mount Accessories Installation Guide</i> .
<b>GV-PA191</b> Power over Ethernet (PoE) Adapter	The GV-PA191 is a Power over Ethernet (PoE) adapter designed to provide power to the IP device through a single Ethernet cable.
<b>GV-POE Switch</b>	The GV-POE Switch is designed to provide power along with network connection for IP devices. The GV-POE Switch is available in various models with different numbers and types of ports.
<b>Power Adapter for GV-IR LED Ring</b>	Contact your sales representative for the countries and areas supported.
<b>GV-Relay V2</b>	The GV-RFelay V2 is designed to expand the voltage load of GV IP devices. It provides 4 relay outputs, and each can be set as normally open (NO) or normally closed (NC) independently as per your requirement.
<b>GV-WiFi Adapter</b>	The GV-WiFi Adapter is a plug-and-play device that provides WiFi connectivity to GV-IP Cameras through a mini USB port. This product complies with IEEE 802.11 b/g/n (Draft 3.0) standards for wireless networking.  <b>Note:</b> Only compatible models and firmware versions support GV-WiFi Adapter.

# 1. Introduction

Welcome to the *GV-Fisheye IP Camera Quick Start Guide*. In the following sections, you will learn the basic installations and configurations of the GV-Fisheye IP Cameras listed below. For a detailed user manual, see the *GV-Fisheye IP Camera User's Manual*.

---

**Note:** Only GV-FER5700 / 5701 / 12203 / 12700 and GV-UNFE2503 are for outdoor use.

---

## 1.1 Packing List

### GV-FE5302

- Fisheye Camera



- Support Bracket x 3



- Camera Cover (Hard Ceiling Mount)



- Camera Cover (In-Ceiling Mount)



- Screw (Hard Ceiling Mount) x 3



- Screw (In-Ceiling Mount) x 3



- Torx Wrench



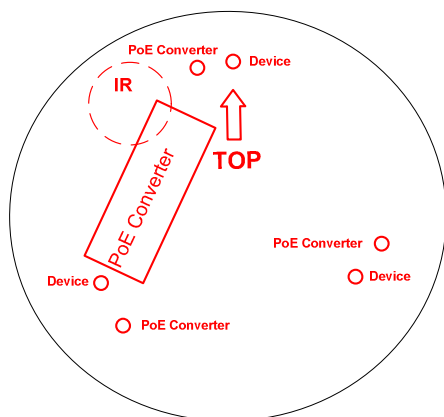
- Plastic Screw Anchor x 3



- Mini USB Extension Cable



- Installation Sticker



- Power Adapter
- Download Guide
- GV-Fisheye IP Dome Hardware Installation Guide
- Warranty Card

---

**Note:** The power adapter can be excluded upon request.

---

## GV-EFER3700 / EFER3700-W

- H.265 Fisheye Camera



- Torx Wrench



- Screw x 2



- Screw Anchor x 2



- Silica Gel Bag x 2



- Terminal Block (3-pin)



- Installation Sticker



- Power Adapter (only for GV-EFER3700-W)

- Download Guide

- Warranty Card

## GV-FER5700 / 5701 / 12203 / 12700

- Fisheye Camera



- Plate Screw x 3



- Torx Wrench



- Data Cable



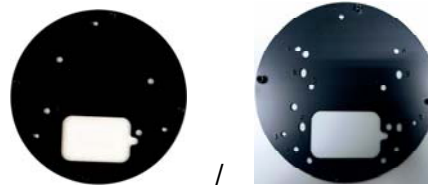
- Installation Sticker



- Silica Gel Bag x 2



- Back Plate A or B, as shown below



- Plastic Screw Anchor x 3



- RJ-45 Connector



- Terminal Block



- Ruler



- Power Adapter (only for GV-FER12203)
- Download Guide
- Warranty Card

---

### Note:

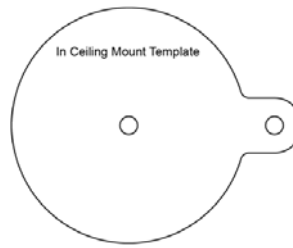
1. The back plate supplied may differ depending on the storage availability at the time of purchase.
  2. The power adapter can be excluded upon request.
-

## GV-UNFE2503

- GV-UNFE2503



- Installation Sticker



- Main Body Adhesive Tape



- Main Body Mount



- M2 Screw



- M3 Screw x 2



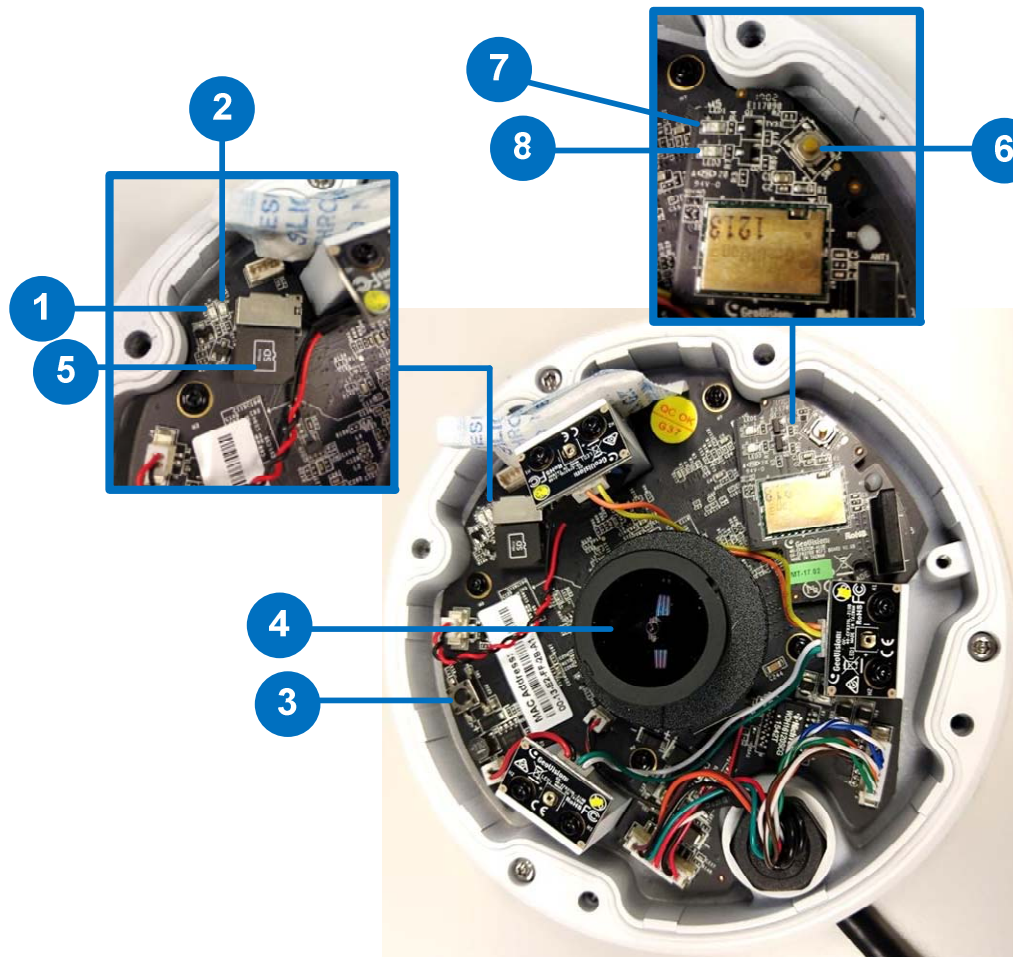
- Warning Label

- Warranty Card

- Download Guide

## 1.2 Overview

### GV-EFER3700 / EFER3700-W



No.	Name	Function
1.	Status LED	Indicates whether the camera is booted successfully or not. Flashes when the camera is loading default settings.
2.	Power LED	Indicates whether the camera is powered on or off.
3.	Default Button	Resets all configurations to default factory settings. See <i>6.3 Restoring to Factory Default Settings</i> .
4.	Lens	Receives image inputs.
5.	Micro SD Card Slot	Inserts a micro SD memory card (SD / SDHC / SDXC / UHS-I) to store recorded data. To insert the micro SD memory card, make sure the side with “micro SD” is facing upward.

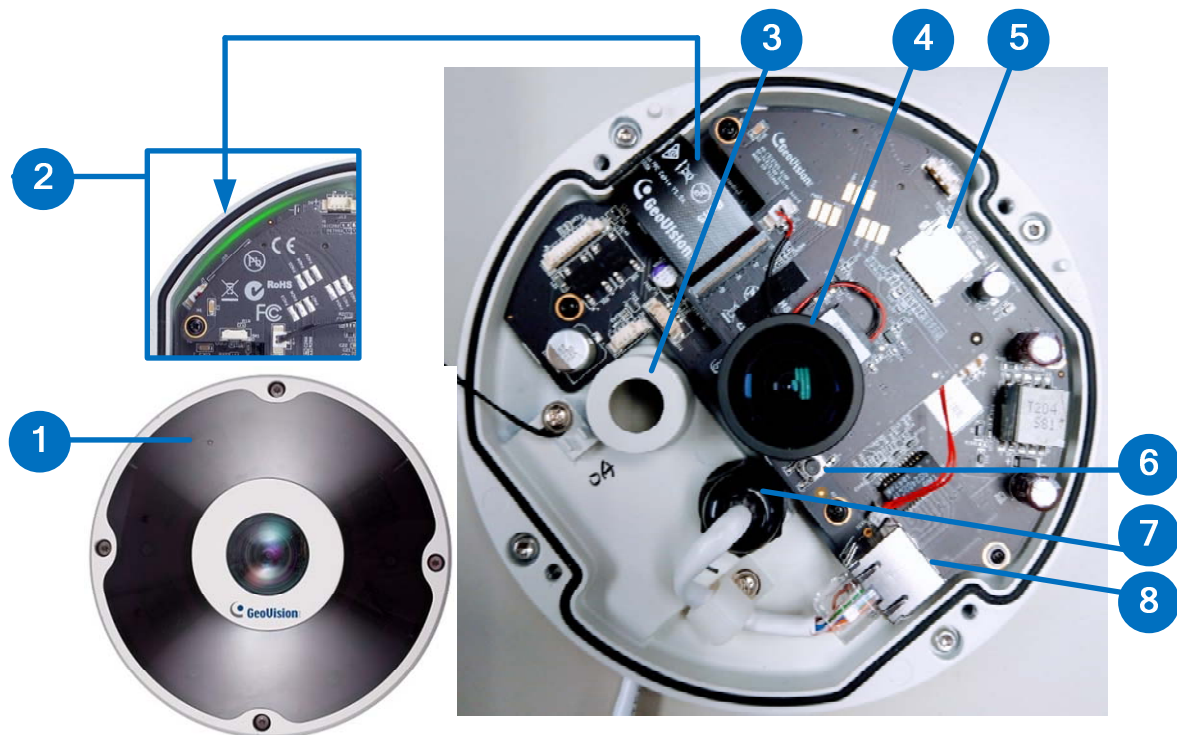
No.	Name	Function
6.	WPS button	Only for GV-EFER3700-W, connects the camera to the WiFi router wirelessly. For detailed instructions, see WPS Button below.
7.	WiFi Status LED	Flashes when the camera is mapping with the WiFi router.
8.	WiFi Power LED	Indicates whether the camera's WiFi module is powered on or off.

### WPS Button

To connect the camera to the WiFi router wirelessly, follow the steps below.

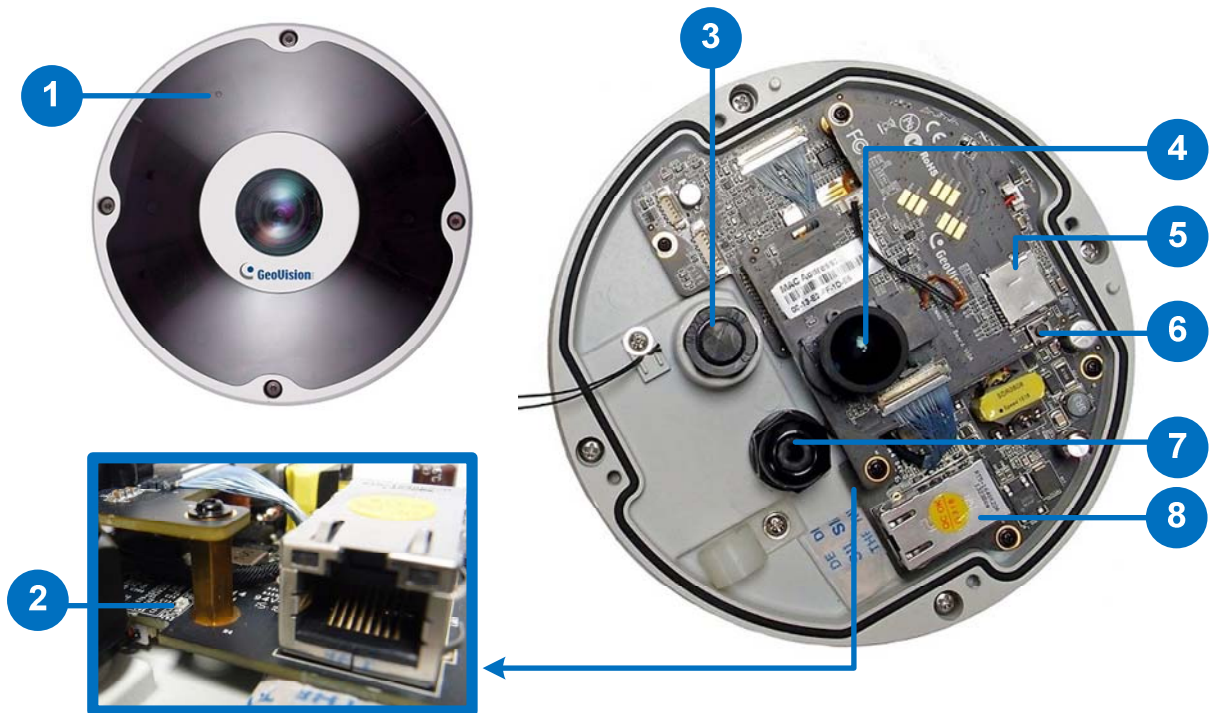
1. After powering on the GV-EFER3700-W, make sure the WiFi Power LED is lit up.
2. Keep pressing the WPS button on the camera. After 5 seconds, make sure the WiFi Status LED beside the WPS button flashes.
3. Press the WPS button on the WiFi router.
4. After the WiFi Status LED stop flashing, your camera is connected to the WiFi router.

## GV-FER5700 / 5701 / 12700



No.	Name	Function
1.	Microphone	Receives the sound from the camera.
2.	Status LED	Green light indicates the camera is powered on. During the process of loading default setting, LED stays off.
3.	Data Cable Connector	Waterproofs the data cable.
4.	Lens	Receives image inputs.
5.	Micro SD Card Slot	Inserts a micro SD memory card (SD / SDHC / SDXC / UHS-I) to store recorded data.
6.	Default Button	Resets all configurations to default factory settings. See 7. <i>Restoring to Factory Default</i> in the <i>Quick Start Guide</i> .
7.	LAN / PoE Connector	Waterproofs the Ethernet cable.
8.	LAN / PoE	Connects to a 10/100 Ethernet or PoE.

### GV-FER12203



No.	Name	Function
1.	Microphone	Receives the sound from the camera.
2.	Status LED	Flashes when the camera is powering on and loading default settings.
3.	Data Cable Connector	Waterproofs the data cable.
4.	Lens	Receives image inputs.
5.	Micro SD Card Slot	Inserts a micro SD memory card (SD / SDHC / SDXC / UHS-I) to store recorded data.
6.	Default Button	Resets all configurations to default factory settings. See 7. <i>Restoring to Factory Default</i> in the <i>Quick Start Guide</i> .
7.	LAN / PoE Connector	Waterproofs the Ethernet cable.
8.	LAN / PoE	Connects to a 10/100/1000 Ethernet or PoE.

## GV-UNFE2503



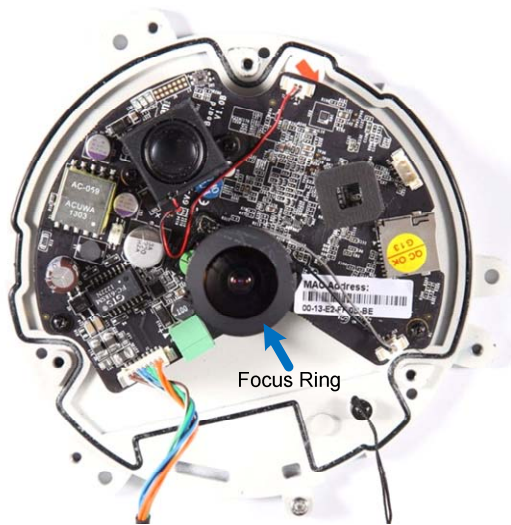
No.	Name	Function
1	Lens	Receives images.
2	Microphone	Receives sounds.
3	IR LED	Provides infrared illumination under low-light situations.
4	RJ12 Cable	Connects the camera lens and main body.
5	IR LED Power Connector	Connects the IR LED power cable.
6	Camera Ring	Fastens the camera to the desired surface.

## 2. Installation

The fisheye camera is designed to be mounted on the ceiling, wall or ground. There are two ways to mount the camera on the ceiling, **Hard Ceiling Mount** and **In-Ceiling Mount**. Make sure the ceiling has enough strength to support the fisheye camera.

---

**Note:** For GV-FE5302 and GV-FER5700 / 5701 / 12203 / 12700 only, to re-focus your camera when the live view is burry, manually adjust the focus ring with your fingers



## 2.1 Hard-Ceiling Mount

In this section, we introduce two types of hard-ceiling mounts: **General Hard-Ceiling Mount, GV-FER5700 / 5701 / 12203 / 12700** and **GV-EFER3700 / EFER3700-W**.

### 2.1.1 General Hard-Ceiling Mount



**Without IR LED Ring**



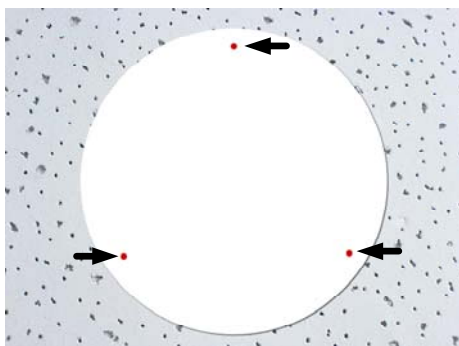
**With IR LED Ring**

---

#### Note:

1. This hard-ceiling mount is not applicable to GV-FER5700 / 5701 / 12203 / 12700 and GV-UNFE2503. For GV-UNFE2503 mounting, see [2.2 In-Ceiling Mount](#).
  2. To connect wires, cables and the IR LED ring, see [3. Connecting the Camera](#) in the Quick Start Guide.
- 

1. Place the installation sticker on the ceiling board. The 3 red dots indicate the location of the screws.



2. At the 3 red dots, drill a hole slightly smaller than the plastic screw anchors provided.
3. Insert the 3 plastic screw anchors in the drilled holes.

4. Secure the fisheye camera with the 3 hard ceiling mount screws provided.



5. For GV-Fisheye Camera that does not come with an IR LED ring, place the camera cover (for hard ceiling mount) on top of the camera and tighten the screws with the supplied torx wrench.



6. For GV-Fisheye Camera with an IR LED ring, follow the steps below to secure the IR LED ring to the camera.

- A. Secure the safety lock to the camera. Then secure the camera cover.



- B. Place the IR LED ring on top of the camera and tighten the screws with the torx wrench provided.



---

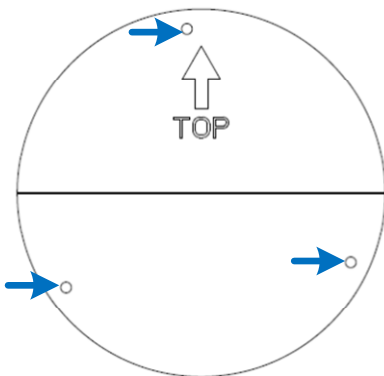
**Caution:** An operating IR LED ring may reach high temperatures. Disconnect the power supply and allow the IR LED ring to cool down before handling the device.

---

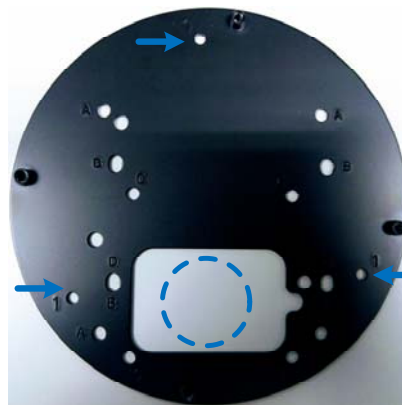
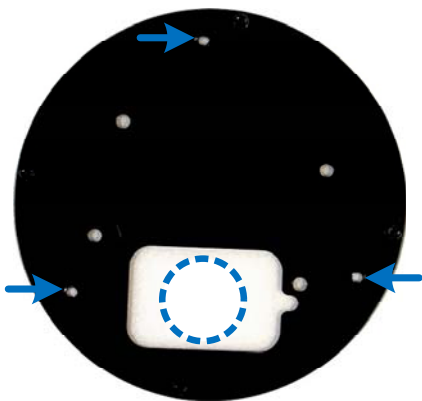
### 2.1.2 GV-FER5700 / 5701 / 12203 / 12700



1. Paste the installation sticker to the ceiling board.
2. At the 3 dots, drill a hole slightly smaller than the plastic screw anchors provided.



3. Insert the 3 plastic screw anchors in the drilled holes.
4. Secure the back plate onto the ceiling board with the 3 screws provided. If you want to thread the camera cables through the ceiling board, you can cut a cable opening as shown below.



---

**Note:** With the standard package, users are provided with one of the two back plates shown above.

---

5. Open the camera cover by unscrewing the indicated screws.

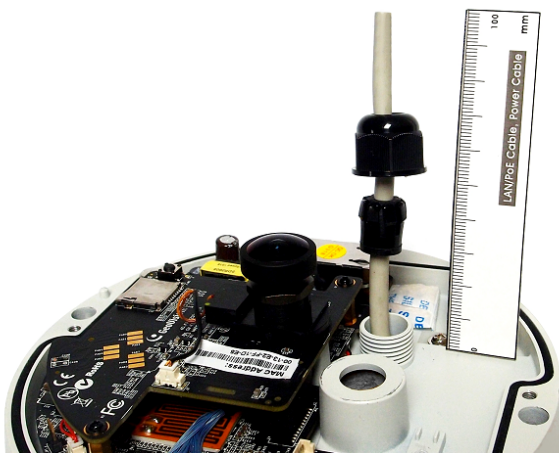


6. Connect the Ethernet cable.

- a. Unplug the LAN / PoE connector and prepare an Ethernet cable with only one RJ-45 connector.



- b. Thread the Ethernet cable through the opening into the camera and through the plug and cap as shown below. Use the supplied ruler to make sure the length of the cable from the opening to the end of the cable is about 10 cm.



- c. Insert the plug into the opening and tighten the cap.
- d. Attach the supplied RJ-45 connector to the Ethernet cable, and plug the connector into the LAN / PoE port.

- e. Loosen the screw on the cable holder and thread the cable under the cable holder.



- 7. Connect the supplied data cable if needed.

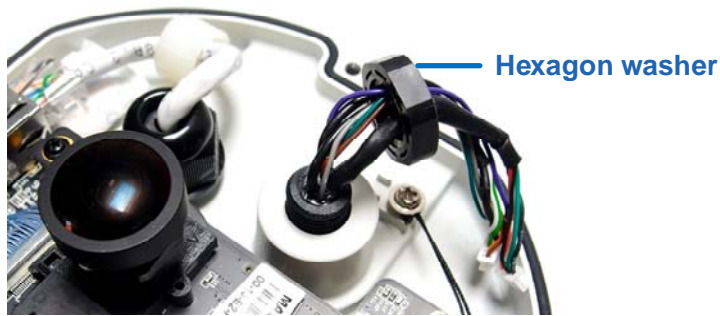
- a. Unscrew the hexagon washer on the data cable opening.



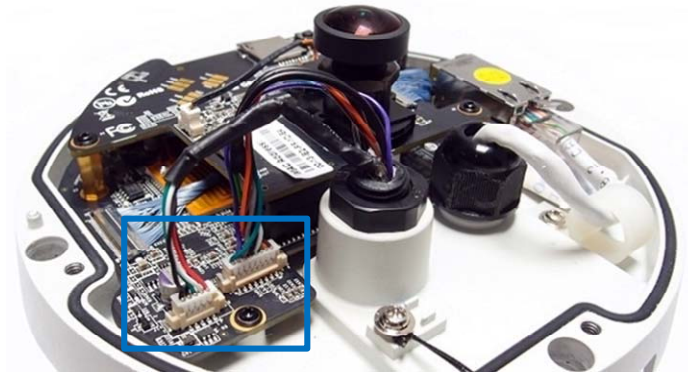
- b. Thread the data cable through the black rubber ring, and then through the opening into the camera.



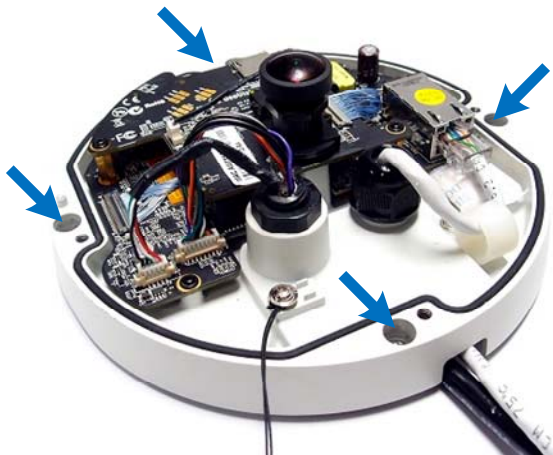
- c. Slide the hexagon washer through the cable, and then tighten the washer.



- d. Plug the pins of the cable to the camera as shown below.



- 8. Secure the camera to the back plate by tightening the 4 screws as shown below. The cables can be threaded through the cable opening on the side or through the ceiling board.

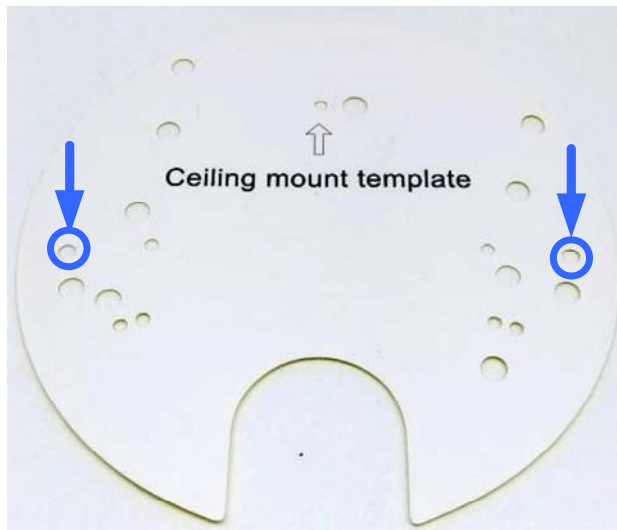


- 9. Secure the camera cover and tighten the 4 screws.

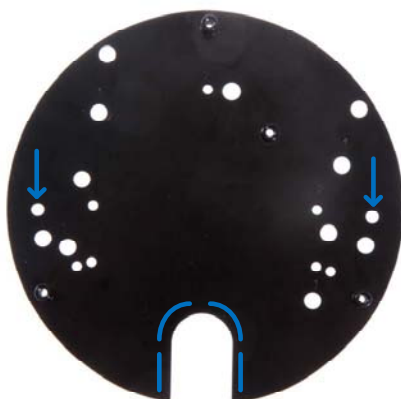
### 2.1.3 GV-EFER3700 / EFER3700-W



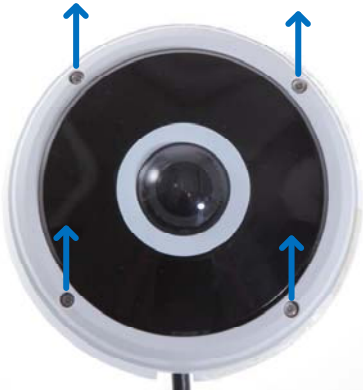
1. Remove the back plate.
2. Paste the installation sticker to the ceiling board.
3. Drill holes in the indicated areas on the installation sticker.



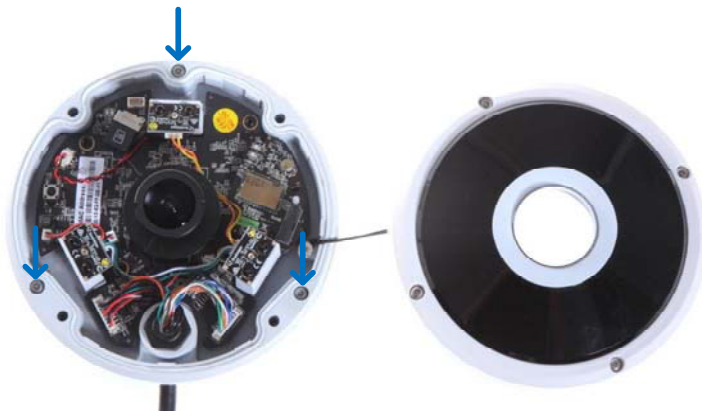
4. Insert the 2 screw anchors in the drilled holes.
5. Secure the back plate onto the ceiling board with the 2 screws provided. If you want to thread the camera cables through the ceiling board, you can cut a cable opening as shown below. Make sure to cut the cable opening slightly larger than the RJ-45 plug of the camera cable.



6. Open the camera cover by unscrewing the indicated screws.



7. Secure the camera to the back plate by tightening the 4 screws as shown below. The cables can be threaded through the cable opening on the side or through the ceiling board.



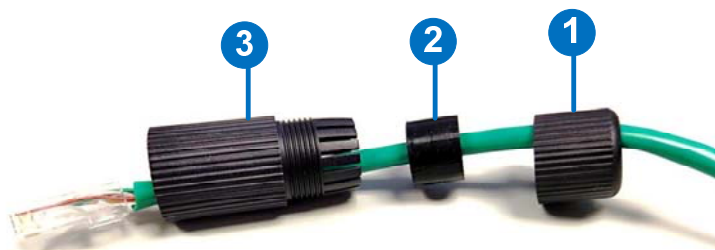
8. Secure the camera cover and tighten the 4 screws.

9. Connect the camera cables. For details, refer to 3. *Connecting the Camera* in the *Quick Start Guide*.

### 2.1.4 Waterproofing the Cable

Waterproof the Ethernet cable of GV-EFER3700 / EFER3700-W by using the supplied waterproof rubber set.

1. Insert the waterproof components through the Ethernet cable as shown below.



Insert in order

2. Insert the cable into the RJ-45 plug.



3. Assemble the waterproof rubber set.



## 2.2 In-Ceiling Mount

In this section, we introduce two types of in-ceiling mounts: **General In-Ceiling Mount** and **GV-UNFE2503**.

### 2.2.1 General In-Ceiling Mount

In-Ceiling Mount allows the GV-Fisheye IP Camera to be mounted into the ceiling, revealing a small portion of the camera. In-Ceiling Mount requires the ceiling board to be between 0.5 – 3.0 cm (0.2 – 1.18 in).

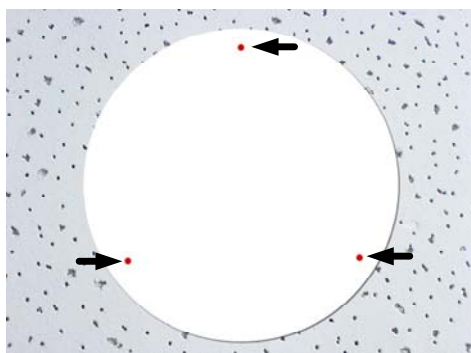


---

**Note:** This in-ceiling mount is not applicable to GV-FER5700 / 5701 / 12203 / 12700 and GV-UNFE2503.

---

1. Place the installation sticker on the ceiling board, and cut the circle part out of the ceiling.



- Align the 3 support brackets with the holes on the back of the camera and secure using the in-ceiling mount screws provided.



- Place the fisheye camera into the ceiling opening.



- On the back side, make sure the black plastic clips are slightly above the ceiling board and pointing outward.



5. From the front side of the camera, tighten the screws.



6. Connect the camera with power, network and other wires. For details, see 3. *Connecting the Camera*.
7. Place the cover on top of the camera and tighten the 3 screws or just put on the in-ceiling cover if it does not contain screws.



## 2.2.2 GV-UNFE2503

The GV-UNFE2503 is designed for outdoors. You can install the camera lens behind a ceiling.

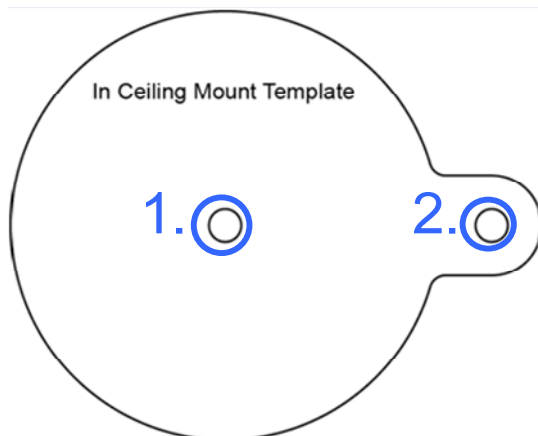


---

**Note:** It is recommended to have the camera lens installed behind a ceiling board with the thickness between 3 mm to 30 mm.

---

1. Paste the installation sticker on the ceiling or the wall where you want to install the camera lens.
2. Drill holes according to the installation sticker.

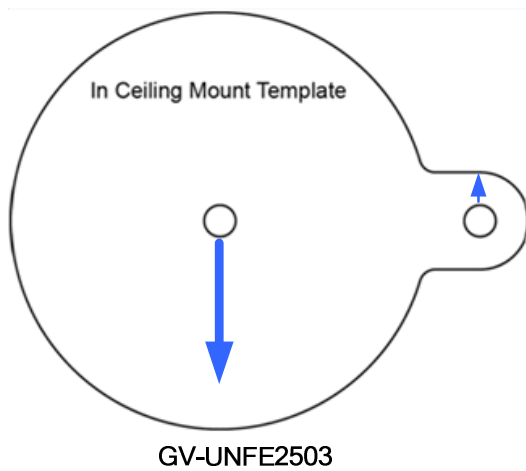


---

**Note:** Hole no. 2 is the top of the camera view.

---

- Using the 2 holes as the starting position, drill or cut out the shape of the template sticker with the tool of your choice.



- Remove the IR LED power cable from the camera lens by rotating the silver ring. Then remove the camera ring from the camera lens by rotating the ring.



- Remove the camera ring from the camera lens by rotating the ring.

---

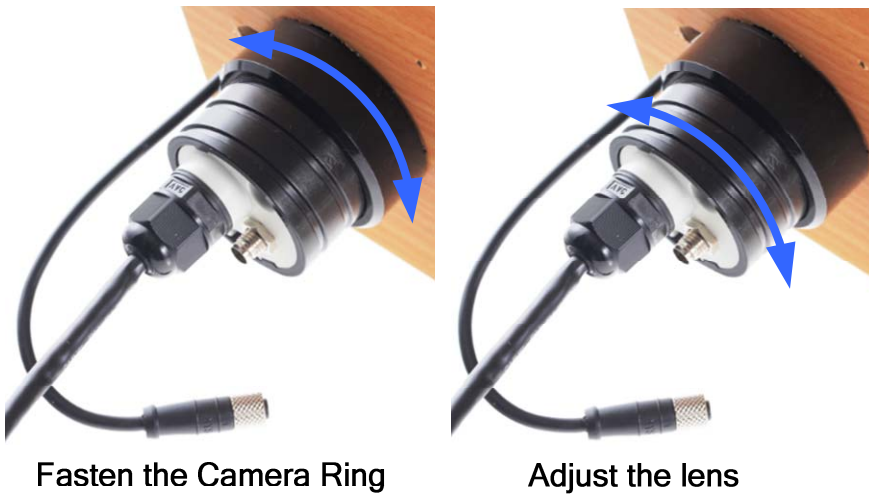
**Note:** You must remove the IR LED power cable and the camera ring in order to secure the camera lens to the desired surface.

---

6. Insert the camera lens into the wall or ceiling.



7. Assemble the camera ring to the camera lens by rotating the ring. Adjust the position of the lens before fully securing the ring.



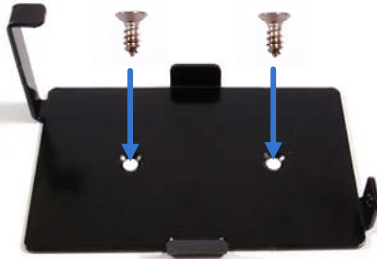
---

**Note:** The side of the camera ring with the protruding notches must face the wall or ceiling.



8. Connect the IR LED cable to the camera lens. Rotate the silver ring to fasten the cable.
9. Place the main body mount where you want to install it, and secure the mount using one of the methods below.

- Insert and tighten the two supplied M3 screws.



- Paste the main body adhesive tape on the bottom side of the main body mount.

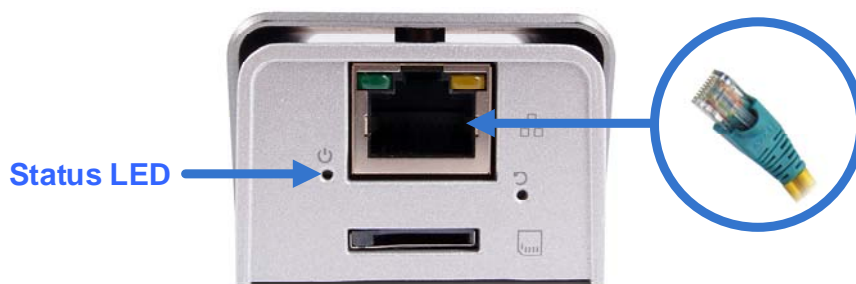


10. Align the main body with the mount as shown below and secure with the supplied M2 screw.



11. Connect the camera lens and the main body with the RJ12 cable.

12. Connect the main body to the network and supply power via the PoE cable.



## 2.3 Wall Mount and Ground Mount

To mount the camera on a wall, follow the instructions in *2.1 Hard Ceiling Mount*. For ground mount, simply place the camera on a flat surface such as a conference table.



---

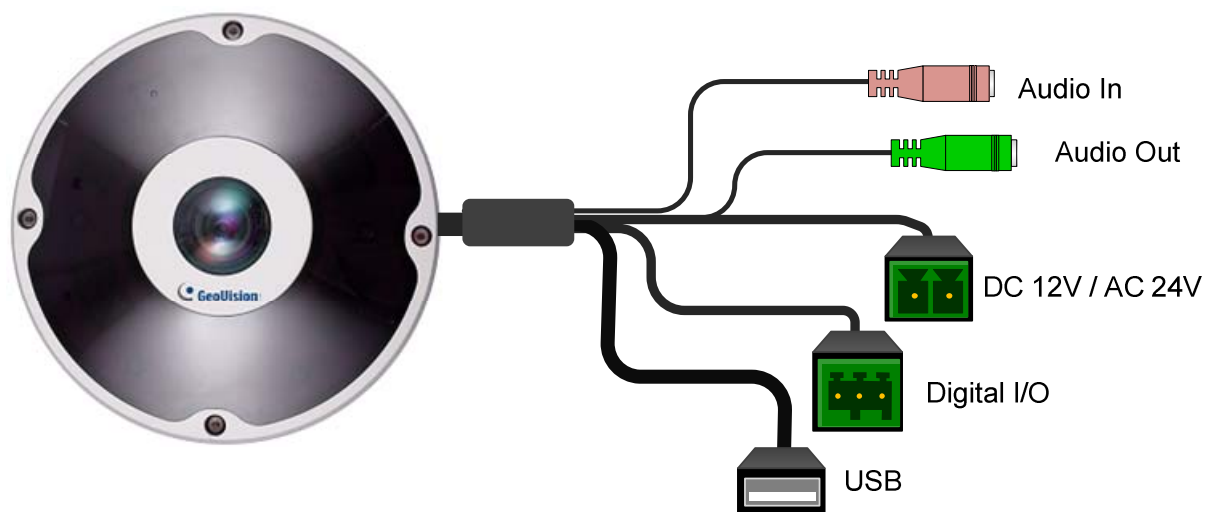
### Hint:

1. Mount the fisheye camera in the middle of the wall to have an excellent overview. Or ensure the camera is focused on the most important areas of the room as directly as possible to have the desired detailed recognition.
  2. Orientate your camera using the printed text "TOP" on the camera or the installation sticker.
-

## 3. Connecting the Camera

The GV-Fisheye Camera comes with a data cable that allows you to connect to the power adapter, WiFi adapter or USB hard drive, microphone, speaker, and/or any I/O devices.

### 3.1 GV-FER5700 / 5701 / 12203 / 12700

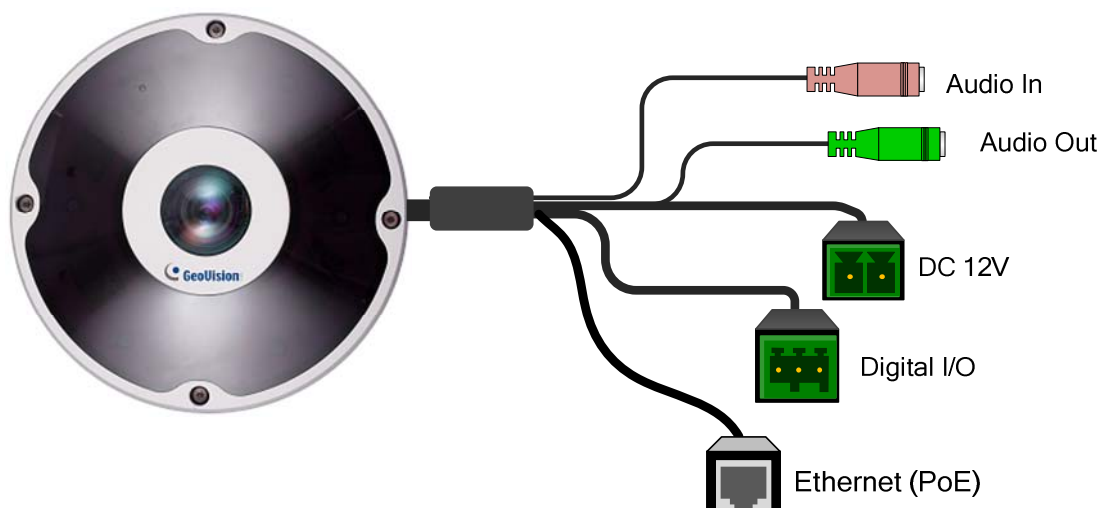



---

#### Note:

1. AC 24V is not supported by GV-FER5700 / 5701 / 12700.
  2. GV-FER12203 does not support the wireless function.
- 

### 3.2 GV-EFER3700 / EFER3700-W



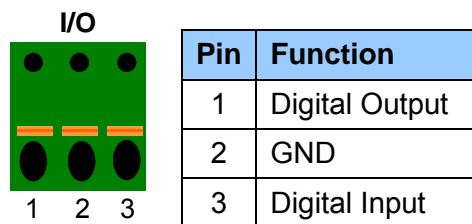
### Connecting to Power

There are two ways to power on the camera:

- Use a Power over Ethernet (PoE) adapter to connect the camera to the network, and the power will be provided at the same time.
- Plug the power adapter to the terminal block on the data cable.

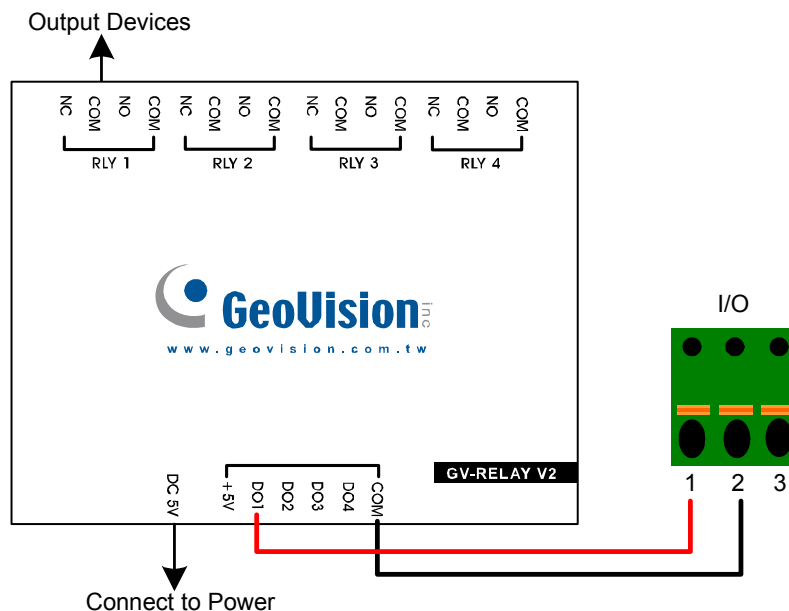
### Connecting to I/O Devices

The camera supports one digital input and one digital output of dry contact.



### Voltage Load Expansion (Optional)

The camera can only drive a maximum load of **200mA 5V DC**. To expand the maximum voltage load to **10A 250V AC**, **10A 125V AC** or **5A 100V DC**, connect the camera to a GV-Relay V2 module (optional product) as illustrated below.



GV-Relay V2	Vandal Proof IP Dome
COM	Pin 2 of I/O terminal block
DO1	Pin 1 of I/O terminal block

## 4. Accessing the GV-Fisheye Camera

### 4.1 Web Browser

Once installed, your GV-Fisheye IP Camera is accessible over the network. Make sure your PC has good network connection. The supported Web browsers are Microsoft Internet Explorer 7.x or later, Firefox, Google Chrome, Safari.

---

**Note:** If you are using Microsoft Internet Explorer 8.0, additional settings are required. Please refer to *Settings for Internet Explorer 8, Appendix A, GV-Fisheye IP Camera User's Manual*.

---

To access GV-FER12203 / 12700 images, the following PC specifications should be met:

<b>CPU</b>	Intel Core i5-4670, 3.40 GHz
<b>Memory</b>	DDR3 8 GB RAM
<b>On Board Graphics</b>	Intel HD Graphics 4600 (Versions of driver from year 2014 or later required)


## 4.2 Looking Up the Dynamic IP Address and Logging In

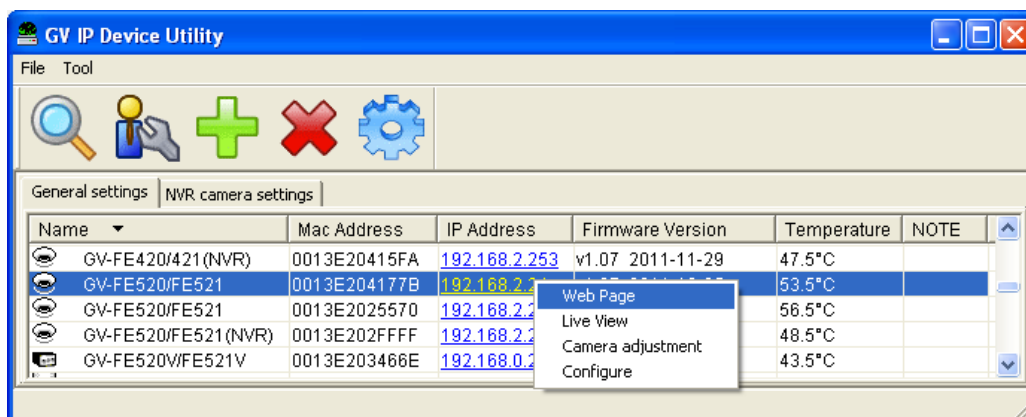
By default, when GV-Fisheye Camera is connected to LAN with a DHCP server, it is automatically assigned with a dynamic IP address. Follow the steps below to look up this IP address.

---


### Note:

1. The computer you use to configure the IP address must be under the same LAN with your camera.
  2. GV-Fisheye Camera has a default IP address **192.168.0.10**, and the login ID and password are **admin**.
  3. The default Administrator and Guest accounts are no longer supported by the latest firmware. See *Creating GV-IP Camera's Login Credentials* at the beginning of the Quick Start Guide.
- 

1. Download and install the GV-IP Device Utility program from the company [website](#).
2. On the GV-IP Utility window, click the  button to search for the IP devices connected in the same LAN. Click the **Name** or **Mac Address** column to sort.
3. Find the camera with its Mac Address, click on its IP address and select **Web Page**.



4. On the login page, type the default ID and password **admin** and click **Apply** to login.



### 4.3 Configuring the IP Address

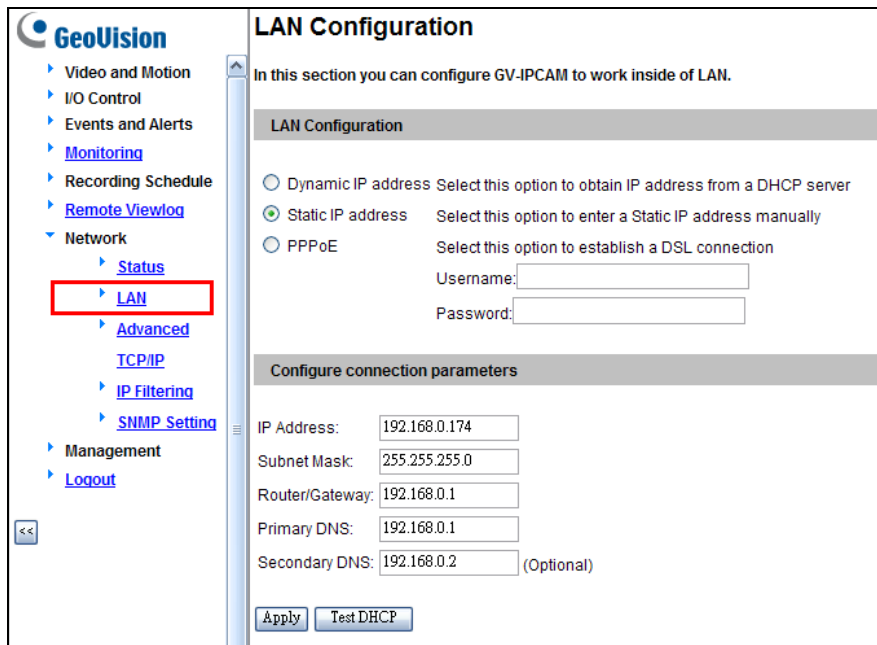
To configure the camera's default IP address or to change the IP address from dynamic to static, follow the steps below.

---

**Note:** If your camera is assigned with the default IP address 192.168.0.10, it is advisable to change this IP address to avoid IP conflict with other GeoVision IP devices.

---

1. In the left menu, select **Network** and then **LAN** to begin the network settings.



2. Select **Static IP address**. Type IP Address, Subnet Mask, Router/Gateway, Primary DNS and Secondary DNS in the **Configure connection parameters** section.
3. Click **Apply**. The camera is now accessible by entering the assigned IP address on the Web browser.

---

### IMPORTANT:

1. If **Dynamic IP Address** or **PPPoE** is enabled, you need to know which IP address the camera will get from the DHCP server or ISP to log in. If your camera is installed in a LAN, use the GV-IP Device Utility to look up its current dynamic IP address. See *Checking the Dynamic IP Address, Chapter 2, GV-Fisheye IP Camera User's Manual*.  
If your camera uses a public dynamic IP address via PPPoE, use the Dynamic DNS service to obtain a domain name linked to the camera's changing IP address first. For dynamic DNS server settings, see *Advanced TCP/IP, Chapter 4, GV-Fisheye IP Camera User's Manual*.
  2. If **Dynamic IP Address** or **PPPoE** is enabled and you cannot access the camera, you may have to reset it to the factory default settings and then perform the network settings again. Refer to section 7 to see how to restore to factory default settings.
-

## 4.4 Configuring the Wireless Connection

Follow the steps below to set up wireless connection to your GV-Fisheye Camera (GV-FE5302, GV-FER5700 / 5701 / 12700 and GV-EFER3700-W).

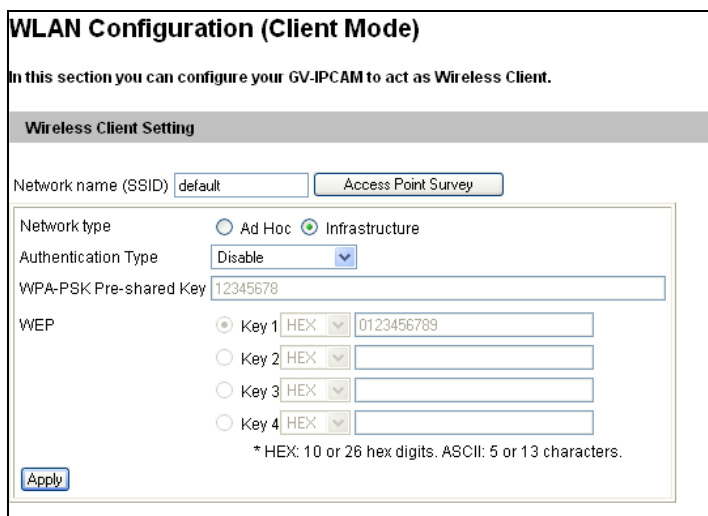
1. To set up the wireless LAN for the first time, power on the camera, connect a standard network cable and insert a WiFi adapter.

---

**Note:** GV-EFER3700-W has a built-in WiFi antenna and supports the WPS function. If your router doesn't support WPS, follow the instructions below to set up the wireless connection.

---

2. An IP address will be automatically assigned to the camera. Use GV-IP Device Utility to search for the device. For details, see *4.2 Looking Up the Dynamic IP Address*.
3. Configure the wireless settings.
  - A. On the Web interface, select **Network**, select **Wireless** and **Client Mode**. This dialog box appears.



**WLAN Configuration (Client Mode)**

In this section you can configure your GV-IPCAM to act as Wireless Client.

**Wireless Client Setting**

Network name (SSID)

Network type  Ad Hoc  Infrastructure

Authentication Type

WPA-PSK Pre-shared Key

WEP

Key 1

Key 2

Key 3

Key 4

\* HEX: 10 or 26 hex digits. ASCII: 5 or 13 characters.

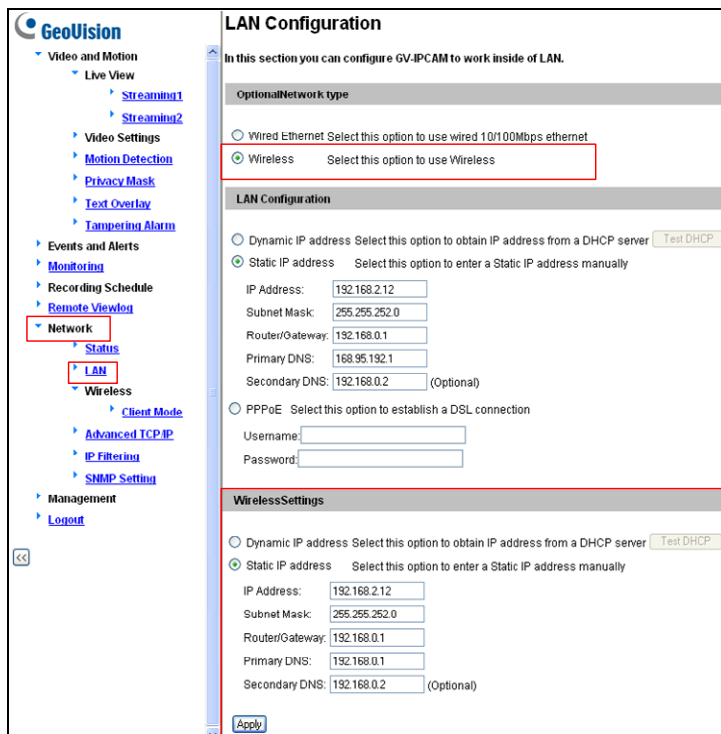
- B. Type the Network Name (SSID) or click the **Access Point Survey** button to search and select for the available Access Points/wireless stations.
- C. Select **Ad-Hoc** or **Infrastructure** for the Network type.
- D. Select the **Authentication Type** using the drop-down list. You can also obtain this information by clicking the **Access Point Survey** button.
- E. Type the **WPA-PSK Pre-shared Key** or **WEP** depending on the encryption setting for the Access Point.
- F. Click **Apply** to save the configuration.

**Note:**

1. Your encryption settings must match those used by the Access Points or wireless stations with which you want to associate.
2. When **Ad Hoc** is used, only **WEP** encryption is supported.
3. When you lose the wireless access, you can still access the unit by connecting it to a LAN and using the GV-IP Device Utility to search for the device.
4. For detailed information on configuring the wireless LAN, see *Wireless Client Mode, Administrator Chapter, GV-Fisheye User Manual on the Software DVD*.

4. Enable wireless LAN.

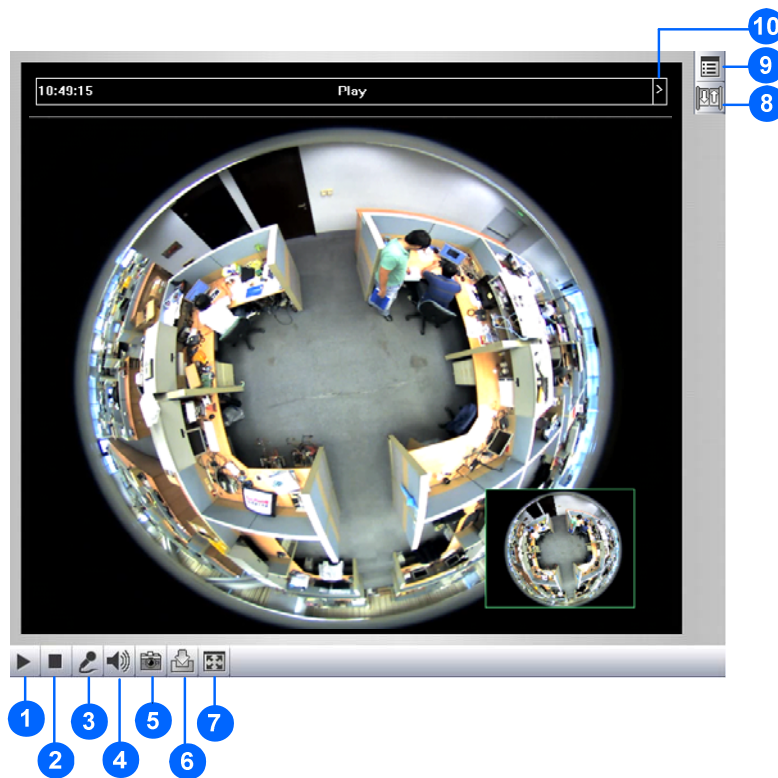
- A. On the Web interface, select **Network** and **LAN**. This page appears.



- B. Select **Wireless** for Optional Network Type.
- C. To use a dynamic IP address assigned by the DHCP server, select **Dynamic IP address**. To use a fixed IP address, select **Static IP address** and type the IP address information.

5. Click **Apply**. The Camera will start creating a wireless connection to the access point.
6. Unplug the Ethernet cable.

## 5. The Web Interface



No.	Name	Function
1	Play	Plays live video.
2	Stop	Stops playing video.
3	Microphone	Listens to the audio around the camera.
4	Speaker	Talks to the surveillance area from the local computer.
5	Snapshot	Takes a snapshot of live video.
6	File Save	Records live video to the local computer.
7	Full Screen	Switches to full screen. Right-click to see more options.
8	I/O Control	Enables the I/O Control Panel or the Visual Automation. This function is only supported by GV-FER5700 / 5701 / 12203 / 12700.
9	Show System Menu	Brings up these functions: Alarm Notify, Video and Audio Configuration, Remote Config, Show Camera Name and Image Enhance.
10	Control Panel	Displays the camera information, video settings, audio data rate, I/O device status, images captured upon alarm, and GPS location of the camera. Also allows you to adjust image quality and install the program from the hard drive.

## 5.1 Fisheye View

To enable the fisheye options, right-click the live view image and select **Geo Fisheye**. Right-click the image again and select **Fisheye Option** to see the following options.

- **Image Alignment:** By default, the image should be properly aligned already. If not, see *3.2.2 Fisheye View in GV-Fisheye Camera User's Manual* to align the image
- **Camera Modes:** You can choose among four view modes.
  - **Quad view:** Composed of four PTZ views.
  - **360 degree:** Composed of two PTZ views and one 360° panoramic view.
  - **Dual 180 degree:** Composed of two 180° views.
  - **Single view:** Composed of one PTZ view.



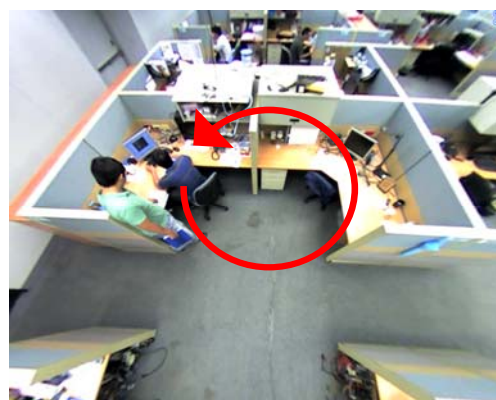
**Quad view:** 4 PTZ views



**360 degree:** 2 PTZ views & 1 360° view



**Dual 180 degree:** 2 180° views



**Single view:** 1 PTZ view

---

**Note:** When the wall mount is selected for Camera Position, only one 180° view will be displayed.

---

- **Camera Position:** Select **Ceiling**, **Wall** or **Ground** according to where the camera is mounted.
- **Adjust AutoPan Speed At Top-Left Channel:** Select low, medium, or high speed to enable Auto Pan for one PTZ view at the rotation speed of your choice. This option applies to **Quad view**, **360 degree** and **Single view**.
- **Zoom:** Select **Zoom In** or **Zoom Out** and then click on the image.
- **Show Source Video At Top-Right Channel:** Shows the circular source image in the top-right quadrant when **Quad view** is selected.
- **360 degrees Object Tracking:** Tracks moving objects under 360 degree view.
- **Settings:** The following settings are available.
  - **Wide View:** Increase the height of the 180 degree view when camera position is set to wall mount.
  - **Frame Rate Control:** You can set the frame rate of the live view image.
  - **Show Original Video in Low Resolution:** Shows circular source image when the resolution is low. This option only works on the GV-DVR / NVR / VMS when the fisheye camera is connected to a GV-DVR / NVR / VMS.

You can drag and drop the PTZ view or 180° view to adjust the viewing angle.

## 6. Upgrading System Firmware

GeoVision periodically releases updated firmware on the website. The new firmware can be simply loaded into the camera by using the Web interface or GV-IP Device Utility.


### Before you Start

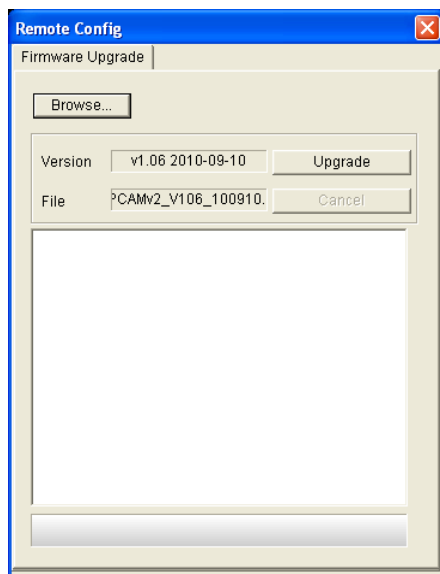
- If you use the GV-IP Device Utility for firmware upgrade, the computer used to upgrade firmware must be under the same network as the camera.
- Stop monitoring of the camera.
- Stop all remote connections, such as GV-VMS.
- While the firmware is being updated, the power supply must not be interrupted.

---

**WARNING:** The interruption of power supply during updating causes not only update failures but also damages to the camera. In this case, please contact our sales representatives and send your device back to GeoVision for repair.

---

1. In the Live View window, click the **Show System Menu** button  on the right and select **Remote Config**. This dialog box appears.



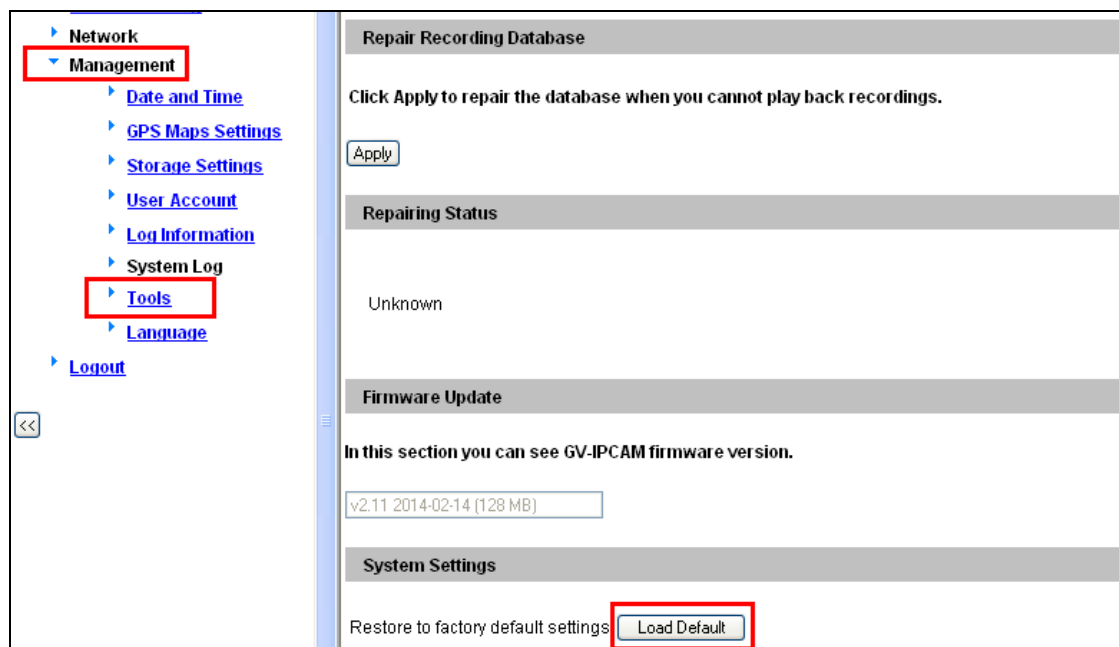
2. Click the **Browse** button to locate the firmware file (.img) saved at your local computer.
3. Click the **Upgrade** button to process the upgrade.

## 7. Restoring to Factory Default

If for any reason the camera is not responding correctly, you can reset it to its factory default settings by using the camera's Web interface or by operating directly on the camera.

### 7.1 Using the Web Interface

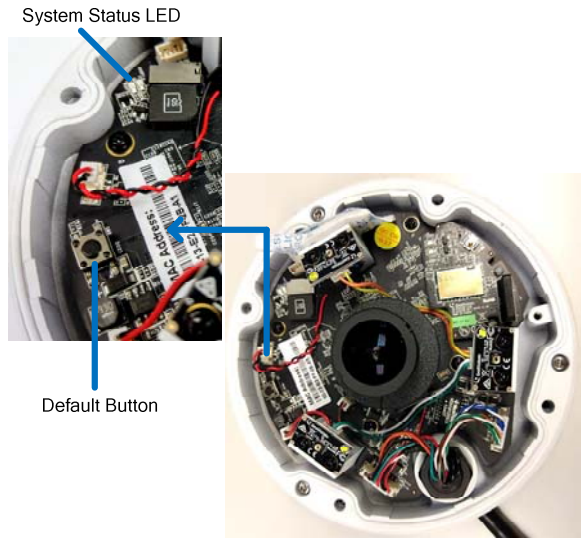
1. In the left menu, select **Management** and select **Tools**.
2. Under the **System Settings** section, click the **Load Default** button.



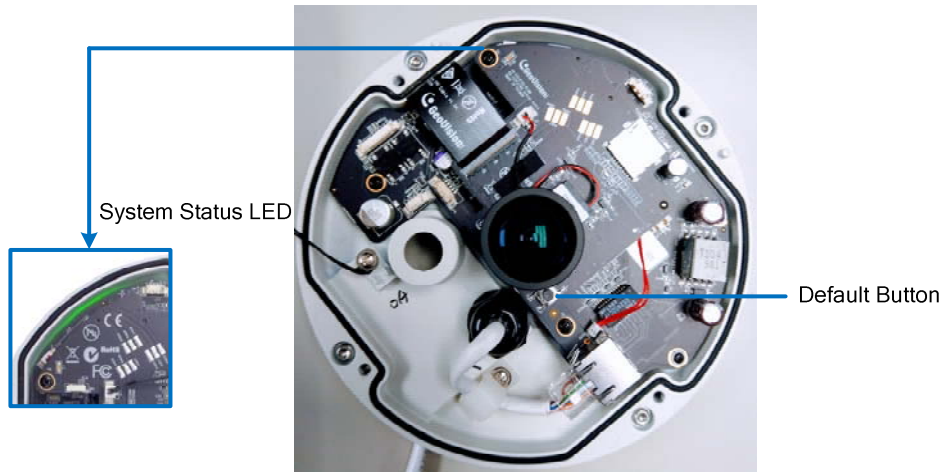
### 7.2 Directly on the Camera

1. Use the supplied torx wrench to remove the camera cover.
2. Use a pointy object such as the tip of a pen to hold down the **Load default** button labeled below.
3. Release the default button when the system status LED blinks.
4. When the status LED fades, the process of loading default settings is completed and the camera reboots automatically.

**GV-EFER3700 / EFER3700-W**



**GV-FER5700 / 5701 / 12700**



**GV-FER12203**

