



**TD-H Series
Selective Call Intercom**



Commercial and Industrial Applications

Features and Benefits

Simple wiring

System is easy to install with simple wiring, keeping installation costs low.

Variety of stations

Mix and match up to 25 stations to create the desired communication solution.

Access control

Select up to two door stations to have entry security in addition to communication.

Paging and talkback

Page individual zones or all zones at once, both with talkback capability.

Internal communication

Call and receive calls from any connected master station (multi-talk paths allowed).

Handset page button

Prevent accidental paging with the strategic location of the page button (also used for door release).

Complements phone system

Improve communication with quick access paging, a feature telephones do not offer.

Great for noisy environments

Use with overhead speakers and amplifiers to produce loud and clear announcements in any environment.

Reliable and designed to last

Install the system with the guarantee it will operate as expected for years to come.



Applications



Offices



Stores



Warehouses



Factories

Components - Up to 25 stations per system

A max. of 2 door stations and 12 paging adaptors are allowed in a system.

Door Stations: mix and match up to 2 (counts toward total capacity of 25 stations)



AX-DM

Audio Door Station
 • Plastic chassis
 • Weather resistant
 • Mullion surface mount
 6-5/16" H
 1-11/16" W
 7/8" D



IF-DA

Audio Door Station
 • Plastic chassis
 • Weather resistant
 • Surface mount
 5-1/8" H
 3-7/8" W
 1-1/8" D



IE-JA

Audio Door Station
 • Stainless steel cover
 • Weather resistant
 • Flush mount (fits 2-gang box)
 4-1/2" H
 4-9/16" W
 2-1/2" D*



IE-SS/A

Audio Door Station
 • Stainless steel panel
 • Weather and vandal resistant
 • Flush mount (fits 2-gang box)
 4-3/4" H
 4-3/4" W
 2-1/2" D*



IE-SSR

Audio Door Station
 • Red mushroom call button
 • Stainless steel panel
 • Weather and vandal resistant
 • Flush mount (fits 2-gang box)
 4-3/4" H
 4-3/4" W
 2-1/2" D*

*Aiphone recommends a 2-1/2" minimum back box depth for all flush mount door stations.

Door Station Adaptor (1 required per door station)



DE-UR

Door Station Adaptor
 6-5/16" H
 5-7/8" W
 1-3/4" D

Door Stations: mix and match up to 25

(up to 23 if using 2 door stations or up to 11 if using 2 door stations and 12 paging adaptors)



TD-1H/B

1-Call Audio Master Station
(cannot be used for door answering)
 • Handset for privacy
 8-1/4" H
 3-15/16" W
 2-7/8" D



TD-3H/B

3-Call Audio Master Station
 • Handset for privacy
 8-1/4" H
 3-15/16" W
 2-7/8" D



TD-6H/B

6-Call Audio Master Station
 • Handset for privacy
 8-1/4" H
 3-15/16" W
 2-7/8" D



TD-12H/B

12-Call Audio Master Station
 • Handset for privacy
 8-1/4" H
 3-15/16" W
 2-7/8" D



TD-24H/B

24-Call Audio Master Station
 • Handset for privacy
 8-1/4" H
 3-15/16" W
 3-1/4" D

Components - Up to 25 stations per system

A max. of 2 door stations and 12 paging adaptors are allowed in a system.

Power Supply (required)



PS-1225UL
12V DC, 2.5A
Power Supply
6-9/16" H
3-9/16" W
2-1/16" D

Paging Adaptors: mix and match up to 12 (counts toward total capacity of 25 stations and requires 1 paging amplifier per paging adaptor)



PD-1
Zone Paging
Adaptor
2" H
3-9/16" W
5-7/16" D



PD-2
Zone Paging/
Talkback Adaptor
2" H
3-9/16" W
5-7/16" D

Paging Amplifiers (1 required per paging adaptor)



MD35M
35W Paging Amplifier
1-3/4" H 8-1/2" W 12-1/2" D



MD60M
60W Paging Amplifier
1-3/4" H 8-1/2" W 12-1/2" D



MD120M
120W Paging Amplifier
1-3/4" H 8-1/2" W 12-1/2" D

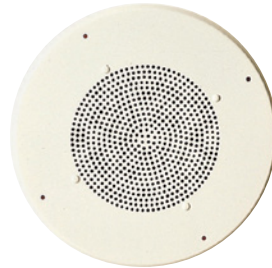
Paging Speakers: install number of speakers needed (based on amplifier wattage)



MH-15W
Multi-Tap Horn Speaker

- 8Ω direct tap
- Built-in transformer for 25/70/100V systems
- Lightweight aluminum
- Weatherproof and waterproof
- Indoor and outdoor use
- Universal mounting bracket

9" H 9" W 9-1/2" D

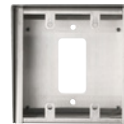


SP-2570N
Ceiling Speaker

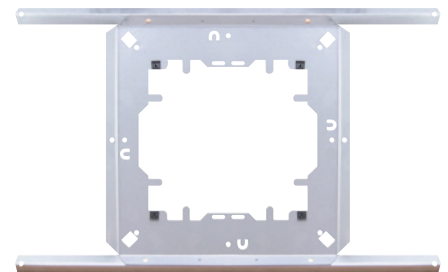
- 8Ω, 25/70V, 5W
- Indoor use
- Flush mount

Diameter: 12-7/8"
Baffle Diameter: 8"

Accessories



SBX-2G/A
Surface Mount Box for
IE-JA, IE-SS/A, or IE-SSR



SSB-2
Ceiling Support
Bracket for SP-2570N



TDW-nA
Terminal Box for TD-nH/B
(n=1, 3, 6, 12, or 24)



RY-AC/A
External Signaling Relay

Specifications

Power Source	12V DC—use PS-1225UL	Communication	Handset (full-duplex)	Door Release	N/O dry contact, 30V AC/DC, 1A (at DE-UR)
Wire Type	Door Station to DE-UR: 2-cond., overall shield—use Aiphone #822202 DE-UR to Master Station: 6-cond., overall shield—use Aiphone #822206		TD-1H/B: 6-cond., overall shield—use Aiphone #822206 TD-3H/B, TD-6H/B: 10 cond., overall shield—use Aiphone #822210 TD-12H/B, TD-24H/B: 16 cond., overall shield—use Aiphone #812216 (two runs of 812216 are required for full functionality of the TD-24H/B)		
Distance	Door Station to Adaptor: 500' (22 AWG) 1,200' (18 AWG)		Between Master Stations: 2,000' (22 AWG) 4,800' (18 AWG)		

AIPHONE
SECURITY
COMMUNICATION
SOLUTIONS
aiphone.com

Customer Service
and Technical Support
(800) 692-0200

Headquarters - Redmond, WA
East Office - Cherry Hill, NJ
Canada Office - Laval, QC

WATCH | CONNECT | LIKE | FOLLOW



TD-H Series
Brochure

© 2022 Aiphone Corp.
Revised 12/2022.
All rights reserved.
Designed in the USA.

The information in this
brochure is subject to
change without notice.