

Quick Start Guide

UA-SNVR1620-P, UA-SNVRL810-P



Before attempting to connect or operate this product,
please read these instructions carefully and save this manual for future use.

UVSSNVR-QG-A



© 2022 GeoVision, Inc. All rights reserved.

Under the copyright laws, this manual may not be copied, in whole or in part, without the written consent of GeoVision.

Every effort has been made to ensure that the information in this manual is accurate. GeoVision, Inc. makes no expressed or implied warranty of any kind and assumes no responsibility for errors or omissions. No liability is assumed for incidental or consequential damages arising from the use of the information or products contained herein. Features and specifications are subject to change without notice.

GeoVision, Inc.
9F, No. 246, Sec. 1, Neihu Rd.,
Neihu District, Taipei, Taiwan
Tel: +886-2-8797-8377
Fax: +886-2-8797-8335
<http://www.geovision.com.tw>

Trademarks used in this manual: *GeoVision*, the *GeoVision* logo and GV series products are trademarks of GeoVision, Inc. *Windows* is the registered trademark of Microsoft Corporation.

March 2022

Scan the following QR codes for product warranty and technical support policy:



[Warranty]



[Technical Support Policy]

Contents

1. Introduction	1
1.1 Packing List	1
2. Installation	2
2.1 Connection Diagram	2
2.2 HDD Installation	3
2.3 Power Supply Connection	4
3. Getting Started	5
3.1 Start Wizard	5
3.1.1 Start Wizard	5
3.1.2 Connecting IP Cameras	5
3.2 Live View Overview	7
3.2.1 Main Window	7
4. Remote Access via Web Client	9
4.1 Basic System Requirements	9
4.2 Looking Up the Dynamic IP Address	10
5. Upgrading Firmware	11

1. Introduction

Welcome to the *UA-SNVRL810-P, UA-SNVR1620-P Quick Start Guide*. In the following sections, you will learn about the basic installations and configurations. For more details, see *UA-SNVRL810-P, UA-SNVR1620-P User's Manual*.

1.1 Packing List

UA-SNVRL810-P

- | | | |
|-----------------------|--------------------------------------|---|
| 1. UA-SNVRL810-P | 5. Power Adapter (DC 48V, 1.5A, 72W) | • |
| 2. 3.5" HDD Screw Kit | 6. Power Cord | |
| 3. 2.5" HDD Screw Kit | 7. Download Guide | |
| 4. USB Mouse | | |

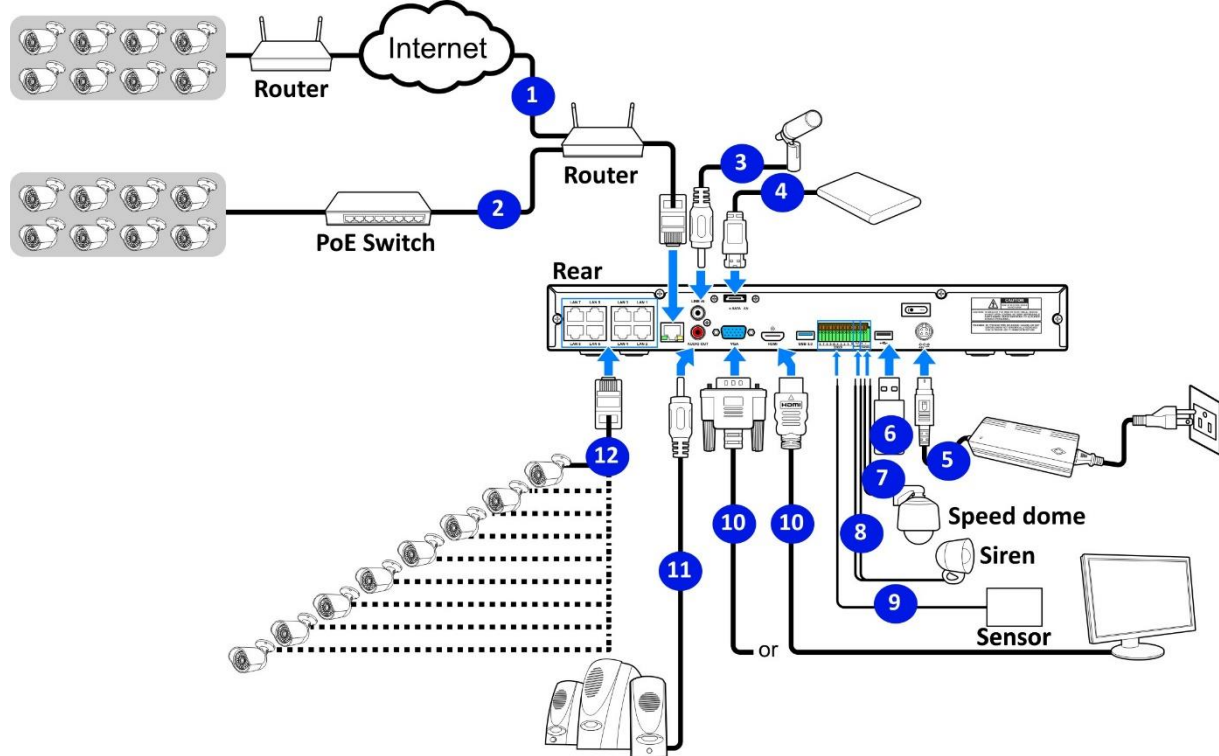
UA-SNVR1620-P

- | | | |
|-----------------------------|--|---|
| 1. UA-SNVR1620-P | 6. USB Mouse | • |
| 2. 3.5" HDD Screw Kit x 2 | 7. Power Adapter (DC 48V, 3.75A, 180W) | |
| 3. 2.5" HDD Screw Kit x 2 | 8. Power Cord | |
| 4. Rack Mount x 2 | 9. Download Guide | |
| 5. Screw for Rack Mount x 2 | | |

Note: The first time you run the NVR, you will be required to set your password immediately in order to protect your privacy. Please be sure to record your username and password and save them in a secure place. If you forget your password, you will be unable to log in the system, please contact your reseller to reset the password.

2. Installation

2.1 Connection Diagram



1. You can connect to other IP cameras remotely over the Internet.
2. Connect a CAT.5E or higher RJ45 Ethernet cable for local connectivity. You can connect to other IP cameras through your local network.
3. Two-way voice conversation with the remote PC.
4. Connect an external hard disk drive to back up files stored on the NVR.
5. Connect the included power cable.
6. Use the USB flash disk for backup, camera, or system upgrade.
7. Connect a RS-485 device such as speed dome camera.
8. Connect an external alarm output device such as siren.
9. Connect external alarm sensors.
10. Connect the video output of the NVR to the TV or monitor via HDMI or VGA connection.
11. Connect speakers if you want to listen to the live audio or audio playback from the NVR.
12. Connect PoE IP cameras. It may take up to 1 minute for the cameras to start transmitting video to the NVR.

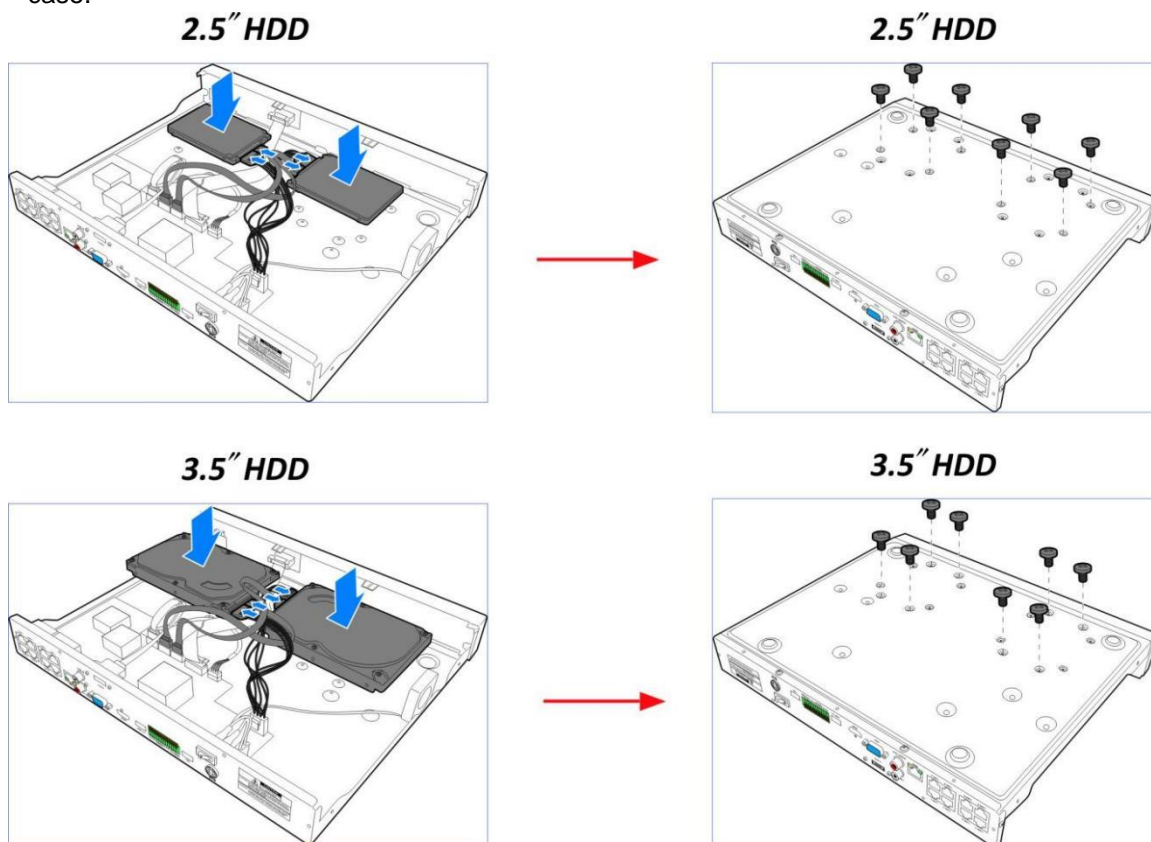
Note: Above diagram is for reference only. The practical connection may be different depending on the NVR you purchased.

2.2 HDD Installation

Depending on the model you purchased, the NVR supports one or two 3.5" / 2.5" SATA hard disk drives.

Caution: Do not install or remove the hard disk drive while the power is turned on.

- a)** Connect the data and power cables to the two hard disk drives and place the hard disk drives on the NVR case. **b)** Carefully flip the NVR case and secure the hard disk drives to the NVR with the eight (8) screws case.

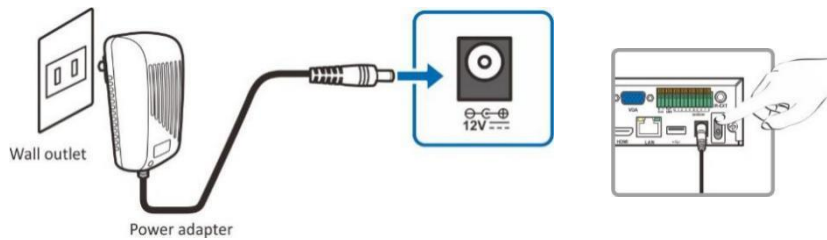


Note: Above procedures are for reference only. The practical operation may be different depending on the NVR you purchased.

2.3 Power Supply Connection

Caution: Only use the supplied power adapter that comes with the NVR.

Connect one end of the power adapter to the power connector on the back of the NVR. Plug the other end of the power adapter into the wall outlet. And press the Power Switch to turn on the power.

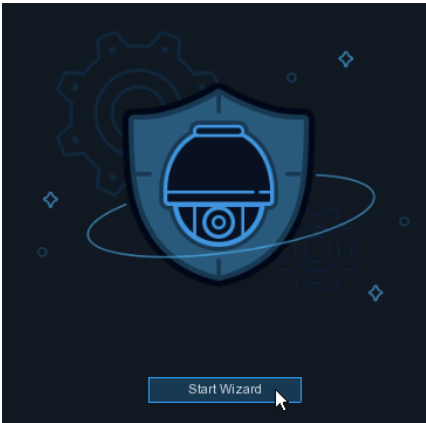


3. Getting Started

3.1 Start Wizard

3.1.1 Start Wizard

Click **Start Wizard** to proceed to the next step.



3.1.2 Connecting IP Cameras

After finishing setting **Network Configuration** and **Date and Time**, this page appears.

Wizard

IP Camera

<input type="checkbox"/>	No.	IP Address/Domain	Port	Manufacturer	
<input type="checkbox"/>	1	192.168.6.171	9988		0
<input type="checkbox"/>	2	192.168.6.173	9988		0
<input type="checkbox"/>	3	192.168.6.152	9988		0
<input type="checkbox"/>	4	192.168.6.162	9988		0
<input type="checkbox"/>	5	192.168.6.165	9988		0
<input type="checkbox"/>	6	192.168.6.155	9988		0
<input type="checkbox"/>	7	192.168.6.168	9988		0
<input type="checkbox"/>	8	192.168.6.153	9988		0
<input type="checkbox"/>	9	192.168.6.174	9988		0
<input type="checkbox"/>	10	192.168.6.172	9988		0
<input type="checkbox"/>	11	192.168.6.170	9988		0
<input type="checkbox"/>	12	192.168.6.169	9988		0
<input type="checkbox"/>	13	192.168.6.159	9988		0

Search



<input type="checkbox"/>	Channel	Edit	State	IP Address/Domain	Sul
	IP CH1				
	IP CH2				
	IP CH3				
	IP CH4				
	IP CH5				
	IP CH6				
	IP CH7				
	IP CH8				
	IP CH9				
	IP CH10				
	IP CH11				
	IP CH12				

Channel Delete

Previous

Next

Cancel

Click **Search** to search IP cameras in the same network. Choose the IP camera(s) you want to add, and then click  icon to add to the NVR. Or, click  button to manually add individual IP camera to a single channel.

- **IP Address/Domain:** IP address or domain name of the IP camera.
- **Alias:** Name of the IP camera.
- **Position:** Position to display the camera name on the screen.
- **Port:** Port of the IP camera.
 - Type **80** for UA-B20004F / UA-B40004F / UA-B4000VF-S / UA-D20004F / UA-D40002F / UA-D4000VF-S / UA-R40002F-SA / GV-IP cameras
 - Type **9000** for UA-B580F3 / UA-R500F2 / UA-R560F2 / UA-R580F2 / UA-R800F2
- **Protocol:** Choose the protocol of the IP camera from the dropdown menu.
 - Select **Onvif** for UA-B20004F / UA-B40004F / UA-B4000VF-S / UA-D20004F / UA-D40002F / UA-D4000VF-S / UA-R40002F-SA / GV-IP cameras
 - Select **Private** for UA-B580F3 / UA-R500F2 / UA-R560F2 / UA-R580F2 / UA-R800F2
- **User Name:** User Name of the IP camera.
- **Password:** Password of the IP camera.
- **Bind channel:** Choose a channel of the NVR you want to attach to.








Note:



1. The system fills in the ID and password using admin/admin by default. Make sure to enter the correct ID and password of the IP cameras when adding them to the NVR.
 2. The default password is 123456 for the following IP camera models: UA-B20004F / UA-B40004F / UA-B4000VF-S / UA-D20004F / UA-D40002F / UA-D4000VF-S / UA-R40002F-SA. To modify the password on the camera's Web interface, refer to [Network Cameras User Manual](#) for details.
-

3.2 Live View Overview

3.2.1 Main Window



No.	Name	Description
1	Camera Title	Display channel number.
2	Status Icon	 This indicates that the NVR is currently recording.  This icon appears when the camera has detected motion.  The icon indicates that the external I/O alarm device is triggered.  This icon indicates that the HDD is in error to work.  This icon indicates the HDD is unformatted.  This icon indicates the HDD is full.  This icon indicates the HDD is read-only.
3	Camera Quick Toolbar	Left-click on the screen to quickly access the camera's toolbar. Refer to 4.2.1 <i>Camera Quick Toolbar</i> in the manual for details.

4	Start Menu	admin: To switch user. Search: Search & Playback. Setup: System Setup. Lock Screen: Lock and unlock screen. Shutdown: Shutdown, reboot, and log out the system.
5	Task Menu Bar	Locate at the bottom of the live view screen. Refer to 4.2.2 <i>Taskbar</i> in the manual for details.
6	System Date and Time	Display the system's date and time.
7	OSD	VIDEO LOSS: The camera is disconnected. No Camera: No camera is assigned. Decoding Failed: The NVR doesn't support the current IP camera compression standard. Change the compression standard to H.264.  Click to open Quick Add menu to add IP camera.  Click to edit the current IP camera.

For details, see 4.2 *Live View Screen Overview* in the Manual.

4. Remote Access via Web Client

Use the **Web Client** to remotely access your NVR at any time via a PC. Before you access the **Web Client**, ensure that your PC's system meets the basic requirements and that the network settings of the NVR are configured properly.

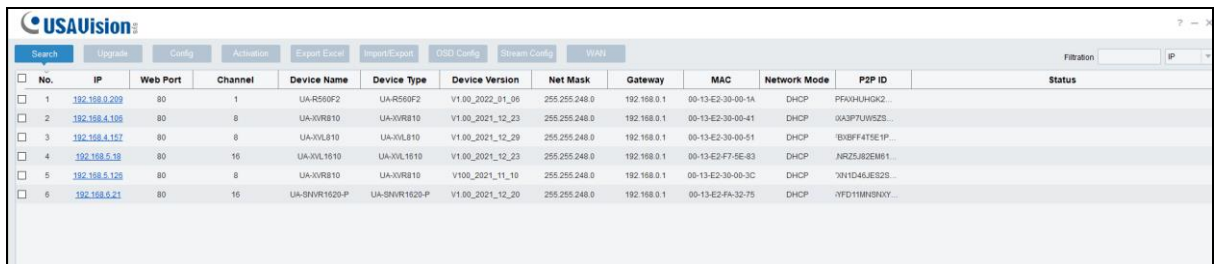
4.1 Basic System Requirements

Item	Minimum	Recommended
CPU	Intel Core™ i5 CPU	Intel Core™ i5 CPU or higher
RAM	4G or more	8G or more
Hard Drive	500G or more	1000G or more
Display RAM	2G or more	4G or more
Display Resolution	1280*1024	1920*1080
OS	Windows 7 or above Mac OS X 10.9 or above	
DirectX	DirectX 11	
Direct3D	Acceleration Function	
Ethernet Adapter	10/100/1000M Ethernet Adapter	
Browser	IE 10 / 11 Safari V12.1 or above Firefox V52 or above Google Chrome V57 or above Edge V79 or above	

4.2 Looking Up the Dynamic IP Address

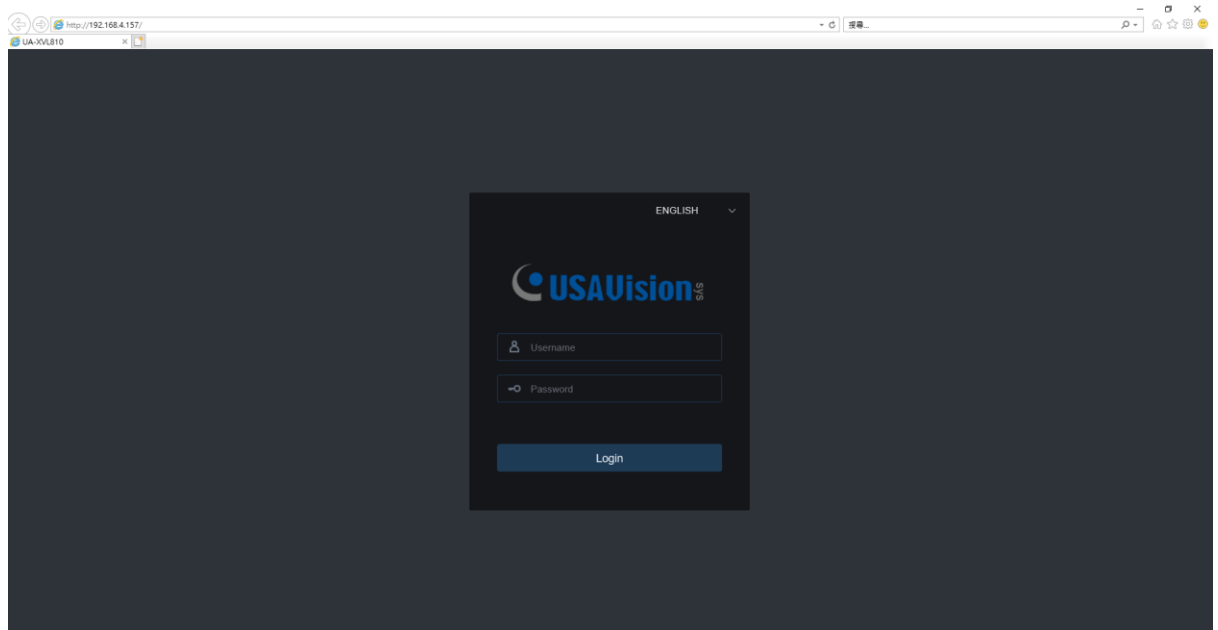
By default, when the NVR is connected LAN with DHCP server, it is automatically assigned with a dynamic IP address. Follow the steps below to look up its IP address.

1. Download and install the **UVS Device Utility** [here](#).
2. On the UVS Device Utility window, click **Search** to search for the devices connected in the same LAN.
3. Find the device with its Mac Address and click on its IP address.



No.	IP	Web Port	Channel	Device Name	Device Type	Device Version	Net Mask	Gateway	MAC	Network Mode	P2P ID	Status
1	192.168.0.209	80	1	UA-RS60F2	UA-RS60F2	V1.00_2022_01_06	255.255.248.0	192.168.0.1	00-13-E2-30-00-1A	DHCP	PF0A1H4GK2...	
2	192.168.4.106	80	8	UA-XVR810	UA-XVR810	V1.00_2021_12_23	255.255.248.0	192.168.0.1	00-13-E2-30-00-41	DHCP	UA3P7UW5ZS...	
3	192.168.4.157	80	8	UA-XVL810	UA-XVL810	V1.00_2021_12_29	255.255.248.0	192.168.0.1	00-13-E2-30-00-51	DHCP	EB8FF4T5E1P...	
4	192.168.5.18	80	16	UA-XVL1610	UA-XVL1610	V1.00_2021_12_23	255.255.248.0	192.168.0.1	00-13-E2-F7-5E-63	DHCP	NRZ5J8ZEM81...	
5	192.168.5.126	80	8	UA-XVR810	UA-XVR810	V1.00_2021_11_10	255.255.248.0	192.168.0.1	00-13-E2-30-00-3C	DHCP	70N1D46JES2S...	
6	192.168.6.21	80	16	UA-9NVR1620-P	UA-9NVR1620-P	V1.00_2021_12_20	255.255.248.0	192.168.0.1	00-13-E2-FA-32-75	DHCP	XPD11MR93KY...	

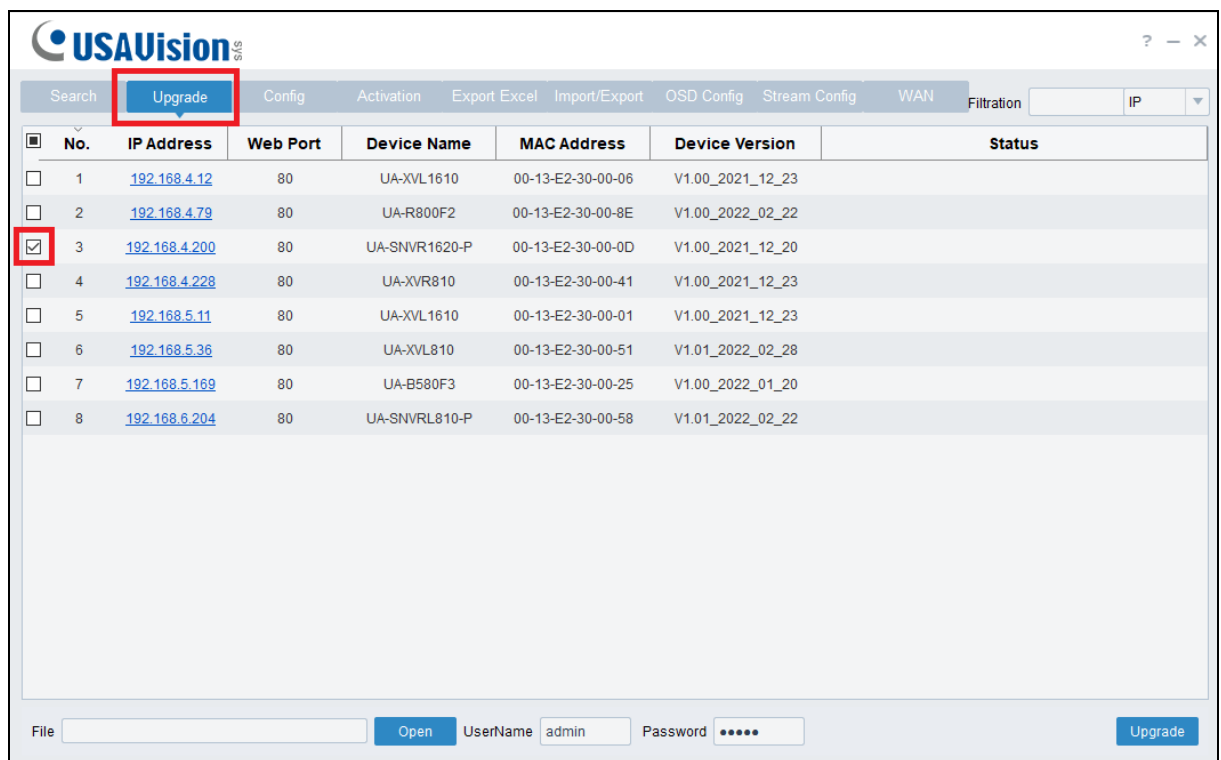
4. The login web page appears.



5. Upgrading Firmware

You can upgrade the firmware on the device remotely through **UVS Device Utility**. Follow the instructions below.

1. Download and install the **UVS Device Utility** program [here](#).
2. On the UVS Device Utility window, click **Upgrade** and check the box of the device you wish to upgrade the firmware on.



3. Click **Open** to locate the firmware file saved at your local computer.
4. Enter the username and password of the device.
5. Click **Upgrade** to process the upgrade.