

## **GV-TMS8800 AI 2 x 4MP Dual-Sensor Multi-Directional H.265 Super Low Lux**

### **WDR Pro IR Fixed IP Dome**



- AI deep learning: AI Perimeter Protection & Classification (Human, Vehicle)
- 1/3" progressive scan super low lux CMOS sensor
- Triple streams from H.265, H.264 or MJPEG
- Min. illumination at 0.002 lux
- Up to 25 fps at 2688 x 1520
- Wide Dynamic Range Pro (WDR Pro)
- Day and night function (with removable IR-cut filter)
- Intelligent IR
- IR distance up to 30 m (100 ft)
- Built-in micro SD card slot (SD / SDHC / SDXC / UHS-I, Class 10) for local storage
- 3-axis mechanism (pan / tilt / rotate)
- Ingress protection (IP67)
- Vandal Resistance (IK10 for metal casing)
- DC 12V / PoE (IEEE 802.3af)
- Built-in microphone
- Two-way audio capable
- Defog
- 3D noise deduction
- AI analytics (Intrusion, Cross Line, Enter Area, Leave Area, Face Detection, People Flow Counting, Crowd Density Monitoring)
- Motion detection
- Tampering alarm
- Text overlay
- Privacy mask
- 12 languages supported
- ONVIF (Profile G, S, T) conformant

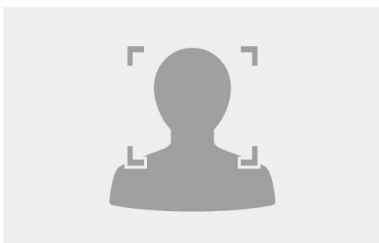
### **Introduction**

GV-TMS8800 features two 4MP CMOS image sensors to deliver a video resolution of 2688 x 1520 at up to 25 fps. It's an outdoor, fixed, network camera equipped with an automatic IR-cut filter and two IR LEDs for day and night surveillance. The camera supports H.265 video codec to achieve better compression ratio while maintaining high quality pictures at reduced network bandwidths. The camera adheres to IP67 and IK10 standards, and can be powered through PoE.

Empowered by deep learning algorithms, AI technology distinguishes human and vehicles from other moving objects. Integrated with GeoVision Video Management Software (VMS), it supports AI perimeter protection, real time alert, playback and more.

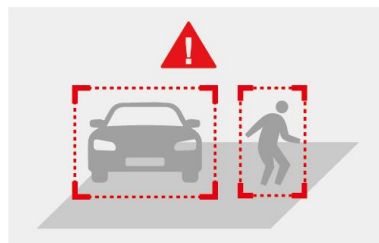
### **Deep Learning Function**

#### **Face Detection**



#### **AI Perimeter Protection**

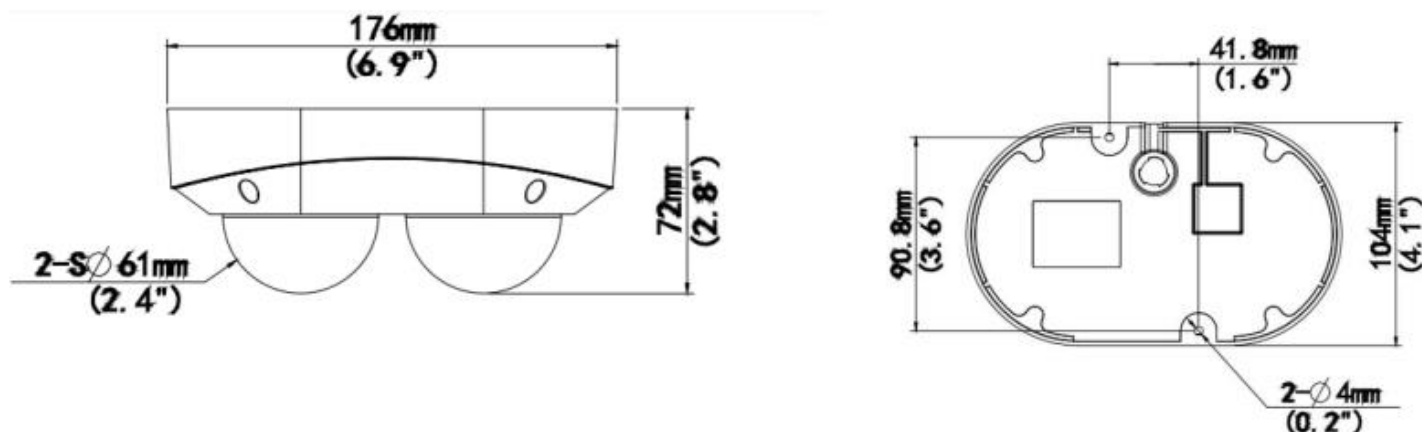
(Intrusion, Crossing Line  
Entering Area, Leaving Area)



#### **People Flow Counting**



## Dimensions



## Specifications

Camera					
Image Sensor		1/3" progressive scan CMOS			
Picture Elements		2688 (H) x 1520 (V)			
Minimum Illumination	Color	0.002 Lux (F1.6, AGC ON)			
	IR ON	0 Lux			
Shutter Speed		Auto / Manual (1 ~ 1/100000 sec)			
White Balance		Automatic, Manual			
Gain Control		Automatic, Manual			
S/N Ratio		Up to 52 dB			
WDR Pro		Yes			
Dynamic Range		130 dB			
Lens					
Megapixel		4 MP for each lens			
Day / Night		Yes (with removable IR-cut filter)			
Lens Type		Fixed			
Focal Length		2.8 mm			
Maximum Aperture		F/1.6			
Mount		Ø 12 mm			
Horizontal FOV		97.7°			
Operation	Focus	Fixed			
	Zoom	Fixed			
	Iris	Fixed			
IR LED Quantity		2 IR LEDs			
Max. IR Distance		30 m (100 ft)			
DORI		Detect	Observe	Recognize	Identify
Lens	2.8 mm	63.0 m (206.7 ft)	25.2 m (82.7 ft)	12.6 m (41.3 ft)	6.3 m (20.7 ft)
Operation					
Video Compression		H.265, H.264, MJPEG			
Video Streaming		Triple streams from H.265, H.264 or MJPEG			
Frame Rate		25 fps at 2688 x 1520, 2560 x 1440, 30 fps at 2304 x 1296, 1920 x 1080, 1280 x 720 (60 / 50 Hz) *The frame rate and performance may vary depending on the number of connections and data bitrates (different scenes).			
Maximum throughput		50 Mbps			
Maximum stream *When the total bitrate is within the maximum throughput		20			
Video Analytics		Motion Detection, Ultra Motion Detection, Tampering Alarm, Audio Detection *Tampering alarm and audio detection are only accessible through the camera's Web interface, which can be used to trigger alerts such as e-mail and FTP			

Image Setting		Brightness, Saturation, Contrast, Sharpness, Flicker-less, Image Orientation (Flip, Mirror, 0°, 90°, 180°, 270° -including Corridor format)		
Audio Compression		G.711		
Audio Support		Two-way Audio (external speaker required)		
Digital I/O	Input	1 Input, dry contact, NO/NC		
	Output	1 Relay Output (DC 30V, 1A / AC 125V, 0.3A)		
Face Detection				
Environment		100 lux		
Detectable face angle	Tilt (Up/Down)	≤ 10°		
	Swing (Left/Right)	≤ 30°		
Max. number of faces		Up to 40		
Min. face image pixel requirement		80 pixels		
Deep Learning Function				
AI Analytics	Sensor 1	Intrusion, Cross Line, Entering Area, Face Detection, Leaving Area, People Flow Counting, Crowd Density Monitoring		
	Sensor 2	Intrusion, Cross Line, Entering Area, Leaving Area		
Network				
Interface		10/100 Ethernet		
Protocol		802.1x, ARP, DHCP, DDNS, DNS, DynDNS, FTP, HTTP, HTTPS, ICMP, IGMP, IPv4, IPv6, NTP, PPPoE, QoS, RTCP, RTP, RTSP, SMTP, SNMP, TCP, UDP, UPnP, ONVIF (Profile G, S, T)		
Video Resolution				
Main Stream		2688 x 1520 (Default), 2560 x 1440, 2304 x 1296, 1920 x 1080, 1280 x 720		
Sub Stream		1280 x 720, 720 x 576, 704 x 288, 640 x 480, 640 x 360 (Default), 352 x 288		
Third Stream (Closed by Default)		720 x 576, 704 x 288, 640 x 360, 352 x 288		
Mechanical				
Camera Angle Adjustment	Pan	0° ~ 180°		
	Tilt	0° ~ 66°		
	Rotate	0° ~ 346°		
Connectors	Power	DC Jack (DC 12V, 1.25A), PoE (IEEE 802.3af)		
	Ethernet	RJ-45		
	Audio	Built-in microphone	Yes	
		External microphone required	Yes (3-pin terminal block)	
		Built-in speaker	No	
		External speaker required	Yes (3-pin terminal block)	
	*Choose either the built-in or external microphone.			
	*The audio in port only supports microphones with power supply.			
	Digital I/O	4-pin terminal block pitch 3.5 mm (0.14")		
Local Storage	Micro SD card slot (SD / SDHC / SDXC / UHS-I, Class 10) *UHS-II card type is not supported.			
General				
Operating Temperature		-30°C ~ 60°C (-22°F ~ 140°F)		
Humidity		0% ~ 95% (no condensation)		
Power Source		DC 12V, 1.25A / PoE (IEEE802.3af)		
Max. Power Consumption		9.1 W		
Dimensions		176 × 104 × 72 mm (6.9" × 4.1" × 2.8")		
Weight		0.62 kg (1.37 lb)		
Ingress Protection		IP67		
Vandal Resistant		IK10 for metal casing		
Certification		FCC, CE, RoHS, UL compliant		
Web Interface				
Installation Management		Web-based configuration		
Maintenance		Firmware upgrade through Web Browser or GV-IP Device Utility		
Access from Web Browser		Live View, Video Recording, Change Video Quality, Bandwidth Control, Image Snapshot, Defog, Text Overlay, Image Masking		

Language	Czech, English, French, German, Hungarian, Italian, Japanese, Polish, Portuguese, Russian, Spanish, Traditional Chinese
<b>Software Applications</b>	
Software Supported (by patch)	GV-VMS (V17.4.8 / V18.3.5, coming soon, patch files required), GV-Control Center (V4.2.1.0, patch files required), GV-Edge Recording Manager Windows Version (V2.2.8, patch files required), GV-Recording Server / Video Gateway (V2.1.1, patch files required)  *GV-TMS8800 occupies two channels of GV-VMS.
Smart Device Access	GV-Eye for iOS / Android (V3.4.0, coming soon)
Live Viewing	Browser (IE, Edge, Chrome, Firefox), Mobile APP


**Note:** Specifications are subject to change without notice.

## Packing List

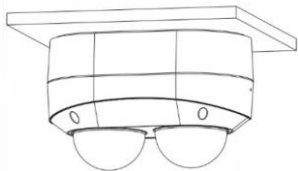
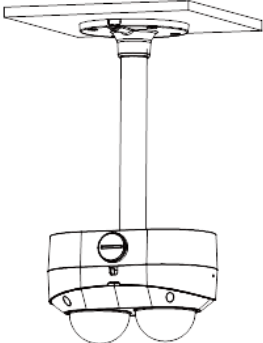
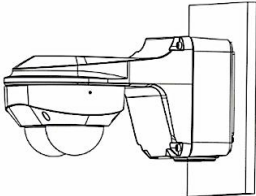
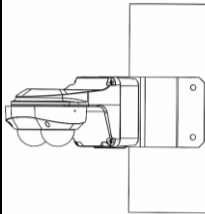
- |                                   |                          |
|-----------------------------------|--------------------------|
| 1. GV-TMS8800 Dual-sensor IR Dome | 4. Waterproof Rubber Set |
| 2. Screw Kit                      | 5. Torx Wrench           |
| 3. Drill Template Paster          | 6. Download Guide        |

## Accessories

Model No.	Name		Details
GV-Mount107 (must be used with GV-Mount511)	Pendant Mount		Dimensions: Ø 120 x 334 mm (Ø 4.72" x 13.15") Weight: 0.74 kg (1.63 lb)
GV-Mount211-12	Wall Mount and Junction Box		Dimensions: Ø229.3 x 126.7 x 126.4 mm (9.0" x 5.0" x 5.0") Weight: 1.02 kg (2.25 lb)
GV-Mount312 (must be used with GV-Mount211-12)	Corner Adaptor		Dimensions: 137mm x 127mm x 116mm (5.4" x 5.0" x 4.6") Weight: 0.42 kg (0.93 lb)
GV-Mount420 (must be used with GV-Mount211-12)	Pole Mount Bracket		Dimensions: Ø 120 x 120 x 53.4 mm (Ø 4.7" x 4.7" x 2.1") Weight: 0.45 kg (0.99 lb) Steel Strap Diameter: Ø 67 ~ 127 mm (Ø 2.6" ~ 5")
GV-Mount511	Dual-sensor Dome Junction Box		Dimensions: 176 x 107 x 48 mm (6.9" x 4.2" x 1.9") Weight: 0.24 kg (0.53 lb)
GV-Mount704 (must be used with GV-Mount107)	Extension Tube		Dimensions: Ø 3.5 x 10 or 20 or 30 or 50 cm (Ø 1.38 x 3.9 or 7.9 or 11.8 or 19.7") Weight: 225g or 360g or 500g or 780g (0.5 lb or 0.79 lb or 1.1 lb or 1.72 lb)
GV-PA301	Gigabit PoE Adapter		GV-PA301 is a Gigabit Power over Ethernet (PoE) adapter.

GV-PA191	PoE Adapter		GV-PA191 is a Power over Ethernet (PoE) adapter designed to provide power to the IP device through a single Ethernet cable.
GV-POE Switch	GV-POE Switch is designed to provide power along with network connection for IP devices. The GV-POE Switch is available in various models with different numbers and types of ports.		
Power Adapter	Contact our sales representatives for the countries and areas supported.		

## Mounting Type

Wall Box Mount	Pendant Mount		Wall Mount and Junction Box	Corner Mount
<b>GV-Mount511</b>	<b>GV-Mount107 + GV-Mount511</b>	<b>GV-Mount107 + GV-Mount511 + GV-Mount704</b>	<b>GV-Mount211-12</b>	<b>GV- Mount211-12 + GV-Mount312</b>
				
<b>Pole Mount</b>				
<b>GV-Mount211-12 + GV-Mount420</b>				
