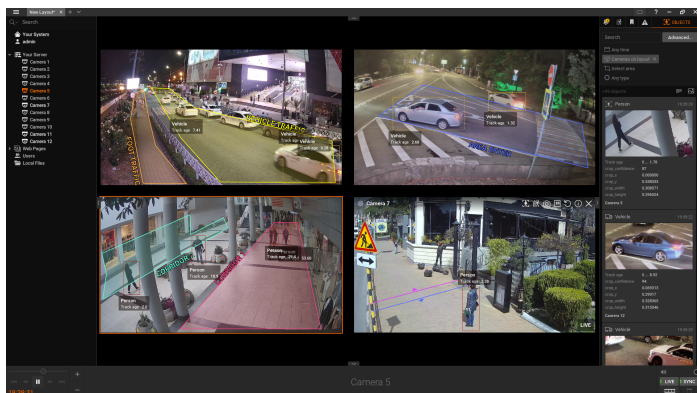


Wisenet WAVE AI Plugin

for PNM-C32084RQZ-8XE4T-W



4ch AI multi-sensor with WAVE VMS, Powered by the NVIDIA Jetson™ Platform

SYSTEM	
Video Management Software	Wisenet WAVE VMS
Plugin	WAVE AI Analytics Plugin
Compatible Hardware	PNM-C32084RQZ-8XE4T-W
Analytics	Intrusion detection; Area enter/exit; Loitering; Object guarding; Object left behind; Crowding; Tailgating; Line crossing; Appearance search (search by vehicle type and color; search by clothing color)
Detection Classes	People; Vehicles; Animals; Unknown
AI Channels	Up to 16 camera streams running AI analytics in standard operating mode*
System Storage Usage	6.25% CPU usage per camera stream running AI analytics.
OS Requirements	Ubuntu 22 with Jetpack 6.0
Disk Space	5GB

The AI Plugin for Wisenet WAVE VMS enhances the effectiveness of your surveillance operations by enabling AI analytics on PNM-C32084RQZ-8XE4T-W.

Surveillance operators can configure the analytics and create custom rules for triggering events within the Wisenet WAVE VMS to leverage these alerts and make informed decisions in real-world situations.

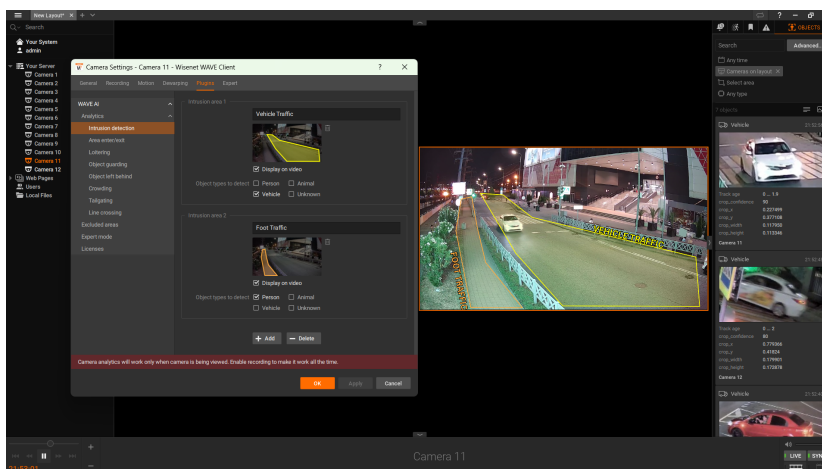
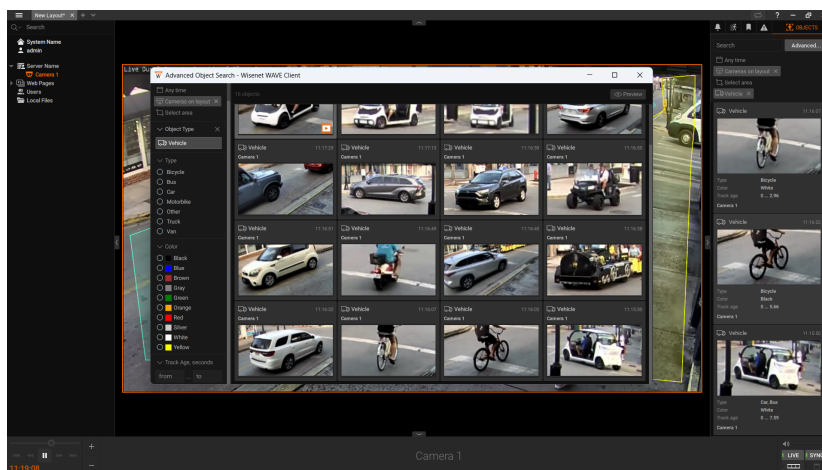
Key Features

Key features of this integration include the detection of people, vehicles, and animals with a variety of associated analytics.

- Intrusion detection
- Area enter/exit
- Loitering
- Object guarding
- Object left behind
- Crowding
- Tailgating
- Line crossing
- Appearance search
 - » Search by vehicle color
 - » Search by clothing color
 - » Search by vehicle type

* Learn more about operating modes in the AI Plugin User Manual.

* Running the WAVE Client on the same machine may degrade device performance and reduce the total number of AI camera streams supported.



Design and specifications are subject to change without notice. The latest product information / specification can be found at [HanwhaVision.com](https://www.hanwhavision.com)

Hanwha Vision is formerly known as Hanwha Techwin.