

## GV-GBLN4800 AI 4MP H.265 Full Color AI-ISP Warm LED WDR Pro Bullet IP Camera



- AI deep learning: AI Perimeter Protection & Classification (Human, Vehicle)
- 1/1.79" progressive scan CMOS sensor
- Triple streams from H.265, H.264 or MJPEG
- Min. illumination at 0.0001 lux
- Up to 30 fps at 2688 x 1520
- AI-ISP for superior noise reduction and vivid color images, day and night
- Smart warm LED distance up to 30 m (100 ft)
- Wide Dynamic Range Pro (WDR Pro)
- Built-in microphone
- Built-in microSD card slot (SD / SDHC / SDXC) for local storage
- Ingress protection (IP67)
- Vandal resistance (IK10 for metal casing)
- DC 12V / PoE (IEEE 802.3af)
- Defog
- 3D noise reduction
- Smart settings (Line Crossing, Region Entrance, Region Exiting, Target Counting, Region Intrusion, Face Detection)
- Motion detection
- Text overlay
- Privacy mask
- 20 languages supported
- ONVIF (Profile G, S, T, M) conformant

### Introduction

GV-GBLN4800 is a bullet IP camera equipped with AI-ISP technology and smart warm LEDs for full color surveillance, even in challenging lighting conditions. The camera combines H.265 compression, PoE support, and rugged IP67/IK10 protection for reliable operation in demanding environments.

Empowered by deep learning algorithms, its AI technology distinguishes humans and vehicles from other moving objects. When integrated with GeoVision Video Management Software (VMS), it supports AI perimeter protection, real-time alert, event playback, and more.

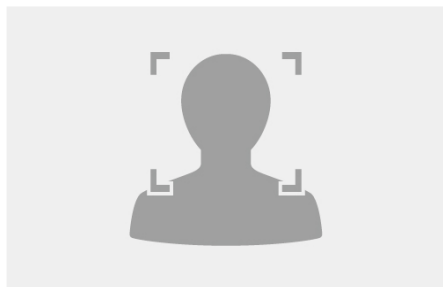
The **AI-ISP** (Artificial Intelligence Image Signal Processor) enhances image quality in low-light scenes by delivering more detail, reducing noise, and minimizing smearing issues. Optimized for environments with at least minimal ambient light—such as moonlit outdoor areas—the camera delivers superior results in outdoor installations.

### Models

Model	Iris	Focal Length (mm)	Horizontal FOV	Maximum Aperture	Image Format
GV-GBLN4800-2F	Fixed	2.8 mm	112°	F/1.0	1/1.79"
GV-GBLN4800-3F		3.6 mm	96°		

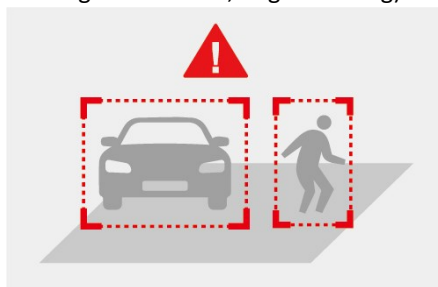
## Deep Learning Function

### Face Detection

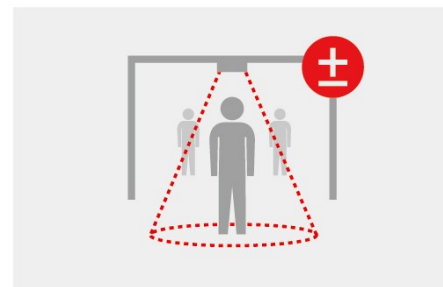


### AI Perimeter Protection

(Region Intrusion, Line Crossing, Region Entrance, Region Exiting)



### People Counting



## Specifications

Camera					
Image Sensor		1/1.79" progressive scan CMOS			
Picture Elements		2688 (H) x 1520 (V)			
Minimum Illumination	Color	0.0001 Lux (F1.0, AGC ON)			
	B/W	N/A			
	LED On	0 Lux			
Shutter Speed		Automatic / Manual (1/3 ~ 1/100000 sec)			
White Balance		Automatic, Manual			
Gain Control		Automatic, Manual			
S/N Ratio		50 dB			
WDR Pro		Yes (supported in the next version)			
Dynamic Range		120 dB (supported in the next version)			
Lens		GV-GBLN4800-2F	GV-GBLN4800-3F		
Megapixel		4 MP			
Day / Night		Color			
Lens Type		Fixed			
Focal Length		2.8 mm	3.6 mm		
Maximum Aperture		F/1.0			
Mount		M12			
FOV	Horizontal	112°	96°		
	Vertical	61°	51°		
	Diagonal	132°	112°		
Operation	Focus	Auto / Manual			
	Zoom	Fixed			
	Iris	Fixed			
Warm LED Quantity		3 warm LEDs			
Max. Warm LED Distance		30 m (100 ft)			
DORI		Detect	Observe	Recognize	Identify
Lens	2.8 mm	52 m (170.6 ft)	21 m (68.8 ft)	10 m (32.8 ft)	5 m (16.4 ft)
	3.6 mm	63 m (206.6 ft)	25 m (82.0 ft)	12 m (39.3 ft)	6 m (19.6 ft)
Operation					
Video Compression		H.265, H.265+, H.264, H.264+, MJPEG			
Video Streaming		Triple streams from H.265, H.264 or MJPEG			
Frame Rate		30 fps at 2688 x 1520, 2560 x 1440, 1920 x 1080, 1280 x 720, 704 x 480, 640 x 480, 640 x 360, 480 x 240, 352 x 240 (60 Hz) 25 fps at 2688 x 1520, 2560 x 1440, 1920 x 1080, 1280 x 720, 704 x 567, 640 x 480, 640 x 360, 480 x 240, 352 x 288 (50 Hz)			
		*The frame rate and performance may vary depending on the number of connections and data bitrates (different scenes).			

Maximum Throughput	80 Mbps		
Maximum Streams *When the total bitrate is within the maximum throughput	10		
Video Analytics	Motion Detection, Video Exception Detection (Abnormal Color Detection, Scene Change, Video Blur), Object Abandoned/Missing Detection		
Smart Alarm	Audio Exception, Cable Disconnection, IP Address Conflict, SD Card Error, SD Card Full		
Image Setting	Brightness, Contrast, Hue, Saturation, Sharpness, Defog, Antiflicker, 3D Noise Reduction, Image Orientation (Flip, Mirror, 0°, 90°, 180°, 270°-including Corridor format)		
Audio Compression	G.711		
Audio Support	One-way audio		
<b>Video Resolution</b>			
Main Stream	2688 x 1520 (Default), 2560 x 1440, 1920 x 1080		
Sub Stream	1280 x 720 (Default), 704 x 480, 704 x 567, 640 x 480, 640 x 360, 480 x 240, 352 x 240, 352 x 288		
Third Stream	1280 x 720 (Default), 704 x 480, 704 x 567, 640 x 480, 640 x 360, 480 x 240, 352 x 240, 352 x 288		
<b>Network</b>			
Interface	10/100 Ethernet		
Protocol	802.1x, API, DDNS, DHCP, FTP, HTTP, HTTP POST, HTTPS, IPv4, IPv6, NTP, ONVIF (Profile G, S, T, M), PPPoE, QoS, RTCP, RTMP, RTP, RTSP, SMTP, SNMP, UDP, UPnP		
<b>Deep Learning Function</b>			
AI Perimeter Protection	Face Event: Face Detection Smart Event: Line Crossing, Region Entrance, Region Exiting, Region Intrusion, Target Counting  *Face events and smart events cannot be enabled at the same time.		
<b>Mechanical</b>			
Camera Angle Adjustment	Pan	0° ~ 360°	
	Tilt	0° ~ 90°	
	Rotate	0° ~ 360°	
Connectors	Power	DC Jack	
	Ethernet	RJ-45	
	Audio	Built-in microphone	Yes
		External microphone required	Yes (Audio jack, 3.5mm)
		Built-in speaker	No
		External speaker required	No
	* For devices with microphone or speaker, choose either the built-in or external option.		
	* If equipped with an Audio In port, it only supports microphones with power supply.		
Digital I/O	N/A		
Local Storage	Micro SD card slot (SD / SDHC / SDXC), up to 512 GB		
<b>General</b>			
Operation Temperature	-30~ 60°C (-22 ~ 140°F)		
Humidity	0% ~ 95% (no condensation)		
Power Source	DC 12V, 1.5A / PoE (IEEE 802.3af)		
Max. Power Consumption	6.5 W		
Dimensions	218.1 x 70.4 x 79.5 mm (8.58 x 2.77 x 3.12 in)		
Weight	0.71 kg (1.57 lb)		
Ingress Protection	IP67		
Vandal Resistance	IK10 for metal casing		
Certification	CE, FCC, RoHS compliant		
<b>Web Interface</b>			
Installation Management	Web-based configuration		
Maintenance	Firmware upgrade through Web Browser or GV-IP Device Utility		
Access from Web Browser	Live View, Playback, Video Recording, Image Quality, Bandwidth Control, Image Snapshot, One-way Audio, Digital Zoom, Text Overlay, Image Masking, Intelligent Mark		

Language	Czech, Dutch, English, French, German, Greek, Hungarian, Italian, Japanese, Korean, Norwegian, Polish, Portuguese, Romanian, Russian, Spanish, Spanish (Latin America), Traditional Chinese, Turkish, Ukrainian
<b>Applications</b>	
Software Supported	GV-VMS (V17.4.8 / V18.3.5 + Patch or later / V20.0.0 or later), GV-Control Center (V4.2.1 + Patch or later), GV-Edge Recording Manager for Windows (V2.3.0 + Patch or later), GV-Recording Server (V2.1.1 + Patch or later), GV-IP Device Utility (V9.0.3 or later)
Smart Device Access	GV-Eye for iOS or Android (V3.4.1 or later)
Live Viewing	Web Browser (Chrome, Edge, Firefox, Safari), Mobile App

**Note:**

1. The AI-ISP may not perform as expected in completely dark environments. **For optimal results, outdoor installation is recommended.**
2. All specifications are subject to change without notice.




**Packing List**

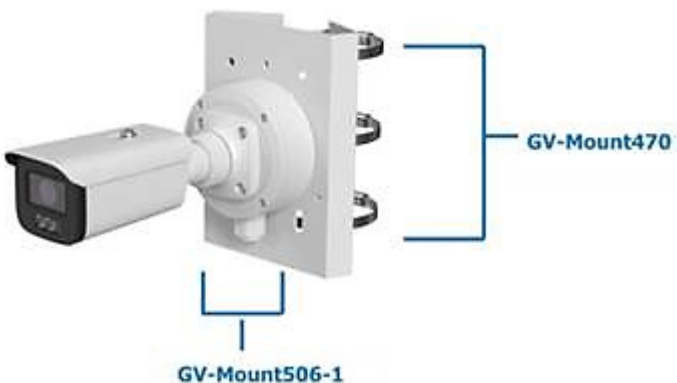



- |                              |                          |
|------------------------------|--------------------------|
| 1. GV-GBLN4800 Bullet Camera | 4. Drill Template Paster |
| 2. Waterproof Rubber Set     | 5. Download Guide        |
| 3. Screw kit                 |                          |

**Accessories**

Model No.	Name		Details
GV-Mount470 (must be used with Mount507-1 or 506-1)	Pole Mount Bracket		Dimensions: 163.3 x 54.5 x 215 mm (6.43 x 2.15 x 8.46 in) Weight: 1.10 kg (2.43 lb)
GV-Mount506-1	Junction Box		Dimensions: 117.9 x 143.3 x 47 mm (4.64 x 5.64 x 1.85 in) Weight: 0.38 kg (0.84 lb)
GV-Mount507	Junction Box		Dimensions: Ø 96 x 38.8 mm (Ø 3.78 x 1.53 in) Weight: 0.135 kg (0.30 lb)
GV-Mount507-1	Junction Box		Dimensions: Ø 111.7 x 55 mm (Ø 4.40 x 2.17 in) Weight: 0.332 kg (0.73 lb)
GV-PA191	PoE Adapter		GV-PA191 is a Power over Ethernet (PoE) adapter designed to provide power to the IP device through a single Ethernet cable.
GV-PA301	Gigabit PoE Adapter		GV-PA301 is a Gigabit Power over Ethernet (PoE) adapter.
GV-POE Switch			GV-POE Switch is designed to provide power along with network connection for IP devices. The GV-POE Switch is available in various models with different numbers and types of ports.
Power Adapter			Contact our sales representatives for the countries and areas supported.

### Mounting Type

Junction Box	Junction Box	Junction Box
GV-Mount506-1	GV-Mount507	GV-Mount507-1
		

Junction Box	Pole Mount Bracket	Junction Box	Pole Mount Bracket
GV-Mount506-1	GV-Mount470	GV-Mount507-1	GV-Mount470
			

### Dimensions

