

 **AIPHONE®**

DB Series

Hands-free Entry Security



The practical solution for
ACCESS CONTROL and
internal communication

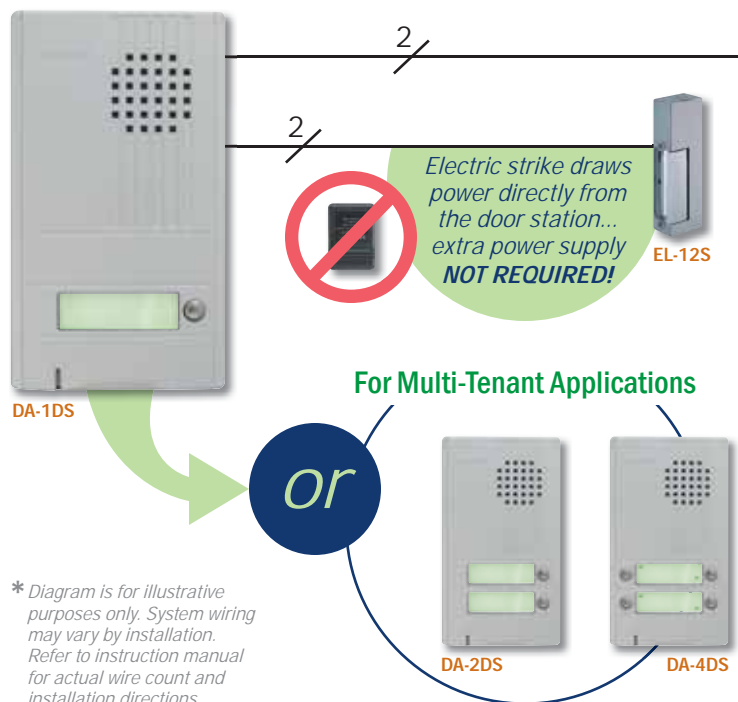
Why the DB Series?



ONLY 2 WIRES!!

The DB Series is a superior and modern audio only entry system designed for new construction or to replace existing audio systems. Providing door entry security and room to room communication (internal & external), the DB Series is the practical solution for access control in the home or office!

WIRING EXAMPLE*



* Diagram is for illustrative purposes only. System wiring may vary by installation. Refer to instruction manual for actual wire count and installation directions.

ACCESS CONTROL will keep people and assets safe inside a home or building.

SUPERIOR SYSTEM replaces existing audio systems with less wires and a larger capacity.

DOOR STRIKE draws power directly from door station so separate power supply and wire are not required.

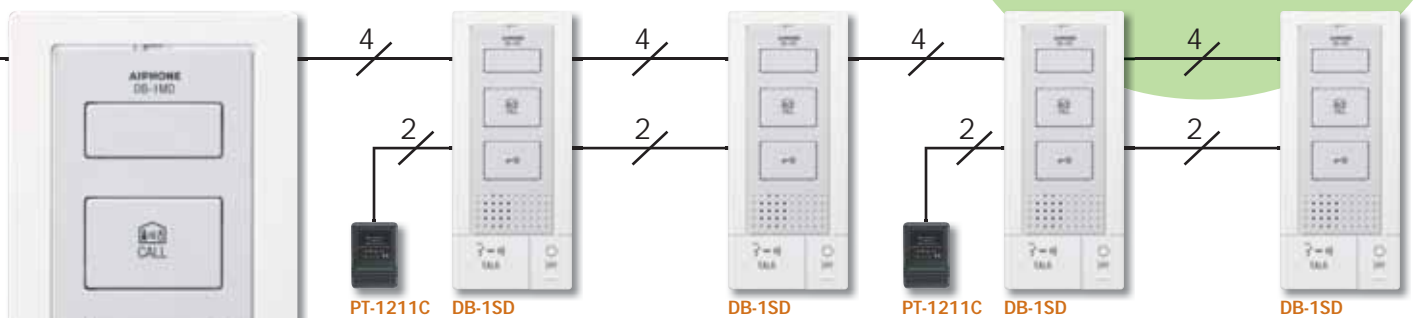
EASY TO INSTALL using only 2 wires from the door station to the inside master station.

ALL CALL between inside master/sub stations provides room to room communication.

HANDS-FREE communication is great for home or office.

CAPACITY is 1 door station and up to 5 inside master/sub stations.

Up to 5 inside master & sub stations for room to room communication.



COMPARISON CHART: Benefits of the DB SERIES vs. other Aiphone systems

Feature ▼	System ►	DB	LEM-1DL / 1DLC	C-123	LEF
Max. Number of Doors		1	1	1	11 (combined w/ masters)
Max. Number of Masters		5	4	2	11 (combined w/ doors)
All Call		✓			✓*
Door Release		✓	✓	✓	✓*
Door Release Power		12V AC at door	Dry contact at master	Dry contact at master	12V DC at master
Volume Control		✓	✓		✓
Secondary Dry Contact		✓			
Wires to door		2 (Including strike)	2 + 2	2 + 2	3 + 2
Wires between inside units		4 + 2 (for power)	4 (1DL) or 5 (1DLC)	4	6 + 1 per unit + 1 per strike
Power Requirements		PT-1211C	PT-1210N per master + strike power	SKK-620B per master + strike power	PS-1225UL + strike power

✓ = Available feature ✓* = Available feature requires additional equipment

DB-1MD

PT-1211C

DB Series Features & Functions



DA-1DS



DA-2DS



DA-4DS

DOOR STATIONS (DA-1DS/2DS/4DS)

- 1, 2, and 4-call stations available
- Surface mount & weather resistant
- Customizable back-lit directory
- 6-7/8"H 4"W 7/8"D



INSIDE SUB STATION (DB-1SD)

- Up to 4 additional inside sub stations
- 4 wires between inside sub stations
- Hands-free communication
- Option button for external device
- All Call to inside stations
- Electric door release
- Surface mount to wall or desk mount using MCW-S/A
- 7-1/4"H 3-1/8"W 1-1/16"D

2 WIRE INSTALLATION

- Easy installation using only 2 wires from door to master
- Utilizes existing doorbell wires

DOOR STRIKE (EL-12S)

- Wired directly to door station using only 2 wires
- Separate power supply not needed for strike
- 12V AC/DC, 200mA

BOX SET (DBS-1A)

- Added convenience in this all-in-one kit
- Set includes 1 single-call door station, 1 master station, & 1 power supply

POWER & ACCESSORIES

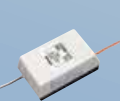
- PT-1211C: AC transformer, 15V AC
- IER-2: Call extension speaker
- TAR-3: External signaling relay
- DAW-P: Door station mounting plate



PT-1211C



IER-2



TAR-3
(requires SKK-620B)



DAW-P



INSIDE MASTER STATION (DB-1MD - shown with optional MCW-S/A)

- Hands-free communication
- Option button for external device
- All Call to inside stations
- Electric door release
- Surface mount to wall or desk mount using MCW-S/A
- 7-1/4"H 3-1/8"W 1-1/16"D

DESK STAND (MCW-S/A)

- Alternative to wall mounting
- Pre-drilled mounting holes
- Adjustable to 45° & 60° angles for better viewing
- 6"H 4-6/16"W 6-1/2"D



45°



60°

Distributed by:

#90235 DB Product Brochure 1/2010



GS-35F-0065L

ISO-14001
Certified



Aiphone Co. Ltd.

ISO 9001:2000
Certified



Aiphone Corp.

Deming
Prize



Aiphone Co. Ltd.



1700 130th Ave. NE
Bellevue, WA 98005
Ph: (800) 692-0200
Fax: (425) 455-0071

www.aiphone.com