



VC8201

Split-type Camera System



5MP Fisheye · 1MP WDR Pro · 360° Surround View ·
3DNR · Recessed Mount

VIVOTEK VC8201 is a split-type camera system, which the camera unit and the video core are separated. With the separated design, it enables the camera unit to be much smaller, making installation easier as well as blending in decoration easily. In addition, the VC8201 can connect up to two 5-Megapixel camera units with 8-meter long cables, dramatically saving installation effort.

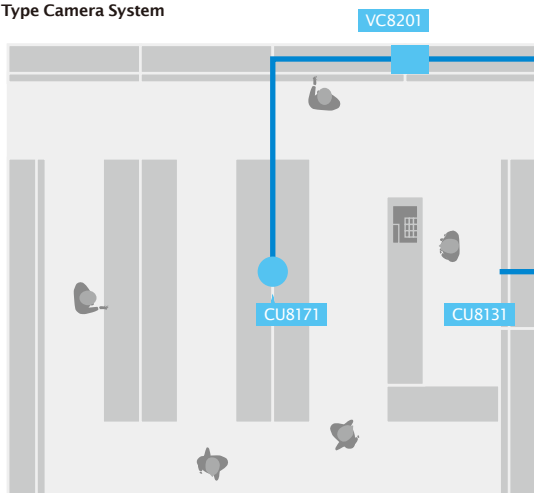
The camera units CU8131 and CU8171 are designed as recessed dome type, in order to fit in the decoration. The CU8131 is equipped with a 1MP sensor and features WDR Pro technology, allowing the camera to capture clear images with high-contrast scenes. The CU8171 is built with a 5MP sensor and fisheye lens to provide a 360° surround view without blind spots. The VC8201 can support different combinations of two camera units, making the installation more flexible.

Incorporating a number of advanced features of VIVOTEK cameras, including 3DNR, tamper detection, 802.3af compliant PoE, SD/SDHC/SDXC card slot, and VIVOTEK's 32-channel recording software, the VC8201 is the best solution of indoor video surveillance.

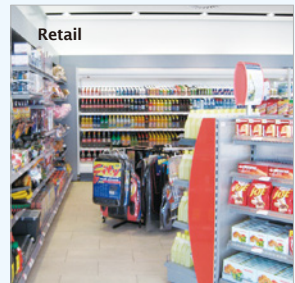
Key Features

- Supports Up to 2 Camera Units
- 2 Camera Options: 1MP WDR or 5MP Fisheye Camera
- Recessed Mount Camera Units
- Built-in Microphone on Camera Units
- Maximum 8 Meters Cable Connection
- Real-time H.264 and MJPEG Compression
- Built-in IEEE 802.3af Compliant PoE
- 3D Noise Reduction

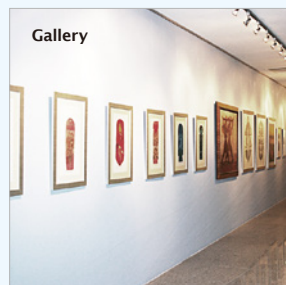
Split Type Camera System



Vehicle



Retail



Gallery



Office

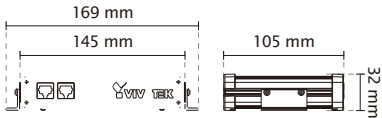
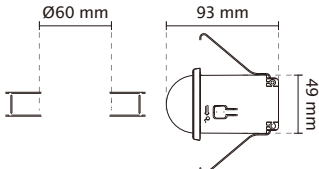
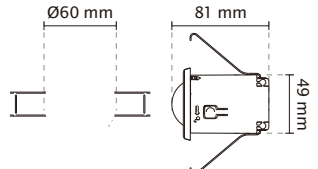
Specifications Video Core

| | | | |
|---------------------------|--|-----------------------------|--|
| Model | VC8201-M11 (with CU8131x2) VC8201-M13 (with CU8131+CU8171) VC8201-M33 (with CU8171x2) | Alarm and Event | |
| System Information | | Alarm Triggers | Video motion detection, manual trigger, digital input, periodical trigger, system boot, recording notification, camera tampering detection |
| CPU | Multimedia SoC (System-on-Chip) | Alarm Events | Event notification using digital output, HTTP, SMTP, FTP and NAS server File upload via HTTP, SMTP, FTP and NAS server |
| Flash | 256 MB | General | |
| RAM | 512 MB | Connectors | RJ-45 connector for Network/PoE connection RJ-12 connector for camera unit connection *2 DC 12V power input Digital input *2 Digital output *2 |
| On-board Storage | SD/SDHC/SDXC Card Slot | LED Indicator | System power and status indicator |
| Video | | Power Input | DC 12V IEEE 802.3af PoE |
| Compression | H.264 & MJPEG | Power Consumption | Max. 9.3 W (DC 12V) Max. 10.8 W (PoE) |
| Video Source | Up to 2 VIVOTEK camera units | Dimensions | 145 mm (W) x 105 mm (D) x 32 mm (H) |
| Maximum Streams | 3 simultaneous streams per camera unit | Weight | Net: 360 g |
| Video Streaming | Adjustable resolution, quality and bitrate Configurable video cropping for bandwidth saving | Safety Certifications | CE, LVD, FCC Class B, VCCI, C-Tick |
| Image Settings | Adjustable image size, quality and bit rate Time stamp, text overlay, flip & mirror Configurable brightness, contrast, saturation, sharpness, white balance, exposure control, gain, backlight compensation, privacy masks Scheduled profile settings, 3D Noise Reduction | Operating Temperature | Starting Temperature: 0°C ~ 50°C (32°F ~ 122°F) Working Temperature: -10°C ~ 50°C (14°F ~ 122°F) |
| Audio | | Warranty | 24 months |
| Audio Capability | Audio input | System Requirements | |
| Compression | GSM-AMR, G.711 | Operating System | Microsoft Windows 7/Vista/XP/2000 |
| Interface | From camera unit | Web Browser | Mozilla Firefox 7~10 (streaming only) Internet Explorer 7.x or 8.x |
| Network | | Other Players | VLC: 1.1.11 or above QuickTime: 7 or above |
| Users | Live viewing for up to 10 clients | Included Accessories | |
| Protocols | IPv4, IPv6, TCP/IP, HTTP, HTTPS, UPnP, RTSP/RTMP, IGMP, SMTP, FTP, DHCP, NTP, DNS, DDNS, PPPoE, CoS, QoS, SNMP, 802.1X | CD | User's manual, quick installation guide, Installation Wizard 2, ST7501 32-channel recording software |
| Interface | 10Base-T/100BaseTX Ethernet (RJ-45) *It is highly recommended to use standard Cat. 5e & Cat. 6 cables which are compliant with the 3P/ETL standard. | Others | Quick installation guide, warranty card, installation kit, 5-meter connection cable x 2 |
| ONVIF | Supported, specification available at www.onvif.org | Optional Accessories | 8 meters connection cable |
| Intelligent Video | | | |
| Video Motion Detection | Five-window video motion detection | | |

Specifications Camera Unit

| | | | |
|-------------------------------|---|-------------------------------|---|
| Model | CU8131 | Model | CU8171 |
| Image Sensor | 1/3" Progressive CMOS | Image Sensor | 1/2.5" Progressive CMOS in 2560x1920 |
| Maximum Resolution | 30 fps @ 1280x800 | Maximum Resolution | 15 fps @ 1696x1696 |
| Focal Length | f = 3.6 mm | Focal Length | f = 1.27 mm |
| Aperture | F1.8 | Aperture | F2.0 |
| Field of View | 86° (Horizontal) 51° (Vertical) 103° (Diagonal) | Field of View | 180° (Horizontal) 180° (Vertical) 180° (Diagonal) |
| Shutter Time | 1/5 sec. to 1/32,000 sec. (Auto-adjustment) | Shutter Time | 1/5 sec. to 1/32,000 sec. |
| WDR Technology | WDR Pro | WDR Technology | WDR Enhanced |
| Minimum Illumination | 1.05 Lux @ F1.8, 50 IRE (Color) | Minimum Illumination | 0.66 Lux @ F2.0, 50 IRE (Color) |
| Tilt Range | 70° | Tilt Range | - |
| Pan/tilt/zoom Functionalities | ePTZ: 48x digital zoom (4x on IE plug-in, 12x built-in) | Pan/tilt/zoom Functionalities | ePTZ: 12x digital zoom |
| S/N Ratio | Above 53 dB | S/N Ratio | Above 62 dB |
| Dynamic Range | 110 dB | Dynamic Range | 57 dB |
| Audio Capability | Built-in microphone | Audio Capability | Built-in microphone |
| Dimensions | Ø: 60 mm x 93 mm | Dimensions | Ø: 60 mm x 81 mm |
| Weight | Net: 58 g | Weight | Net: 51 g |
| Operating Temperature | Starting Temperature: 0°C ~ 40°C (32°F ~ 104°F) Working Temperature: -10°C ~ 40°C (14°F ~ 104°F) | Operating Temperature | Starting Temperature: 0°C ~ 40°C (32°F ~ 104°F) Working Temperature: -10°C ~ 40°C (14°F ~ 104°F) |

Dimensions

| | | |
|---|---|---|
| VC8201 | CU8131 | CU8171 |
|  |  |  |

All specifications are subject to change without notice. Copyright © VIVOTEK INC. All rights reserved.

Distributed by:

VIVOTEK INC.
6F, No.192, Lien-Cheng Rd., Chung-Ho,
New Taipei City, 235, Taiwan, R.O.C.
T: +886-2-82455282 F: +886-2-82455532
E: sales@vivotek.com

VIVOTEK USA
2050 Ringwood Avenue,
San Jose, CA 95131
T: 408-773-8686 F: 408-773-8298
E: salesusa@vivotek.com

VIVOTEK Europe
Randstad 22-133, 1316BW Almere,
The Netherlands
T: +31(0)36-5298-434
E: saleseurope@vivotek.com

Ver 1.5