



EX65 Explosion-Protected Camera

VEN-650 Series



BOSCH

en Installation Manual

Table of contents

1	Safety	5
1.1	About this Manual	5
1.2	Legal Information	5
1.3	Safety Precautions	5
1.4	Important Safety Instructions	6
1.5	Important Notices	7
1.6	FCC & ICES compliance	9
1.7	UL Certification	9
1.8	Explosion Protected Certifications	9
1.9	Joint Information	11
1.10	Warranty / Limitation of Liability	12
1.11	Customer Support and Service	13
2	Product Description	14
2.1	Unpacking	14
2.2	Parts List	15
2.2.1	Parts Included with the Product	15
2.2.2	User-supplied Parts	15
3	Planning	16
3.1	Dimensional Drawings	16
3.2	Initial Preparations	17
4	Installation Overview	18
5	Connections	20
5.1	Power Cable Requirements	20
5.1.1	Wire Distance Guide	20
5.2	Coax Cable Requirements	20
5.3	Alarm Cable Requirements	21
5.4	Fiber Optic Cable Requirements	21
5.5	Making the Connections	21
6	Configuration	24
7	Mounting	26
7.1	Mounting the Unit	26
7.2	Installing the Sunshield	28
8	Operation	29
8.1	Menus	29
8.1.1	Top level menus	29
8.1.2	Menu navigation keys	30
8.2	Pre-defined modes	30
8.3	Camera control communication (Bilinx)	30
8.4	Main menu structure	31
8.4.1	Mode submenu	31
8.4.2	ALC submenu	31
8.4.3	Shutter/AGC submenu	32
8.4.4	Day/Night submenu	33
8.4.5	Enhance / Dynamic Engine submenu	34
8.4.6	Color submenu	35
8.4.7	VMD submenu	35
8.5	Install menu structure	36

8.5.1	Language submenu	36
8.5.2	Lens Wizard submenu	37
8.5.3	Synchronization submenu	37
8.5.4	Alarm I/O submenu	37
8.5.5	Connections submenu	38
8.5.6	Test signal submenu	39
8.5.7	Camera ID submenu	39
8.5.8	Privacy masking submenu	39
8.5.9	Defaults submenu	40
9	Troubleshooting	41
9.1	Customer Service	41
9.2	Camera Operation	41
10	Maintenance	42
10.1	Repairs	42
10.2	Removal of the Camera and Lens	42
10.3	Installation of the Camera and Lens	42
10.4	Back Focus Adjustment	43
10.5	Replacement of the Mounting Cradle	43
11	Technical data	45

1 Safety

1.1 About this Manual

This manual has been compiled with great care and the information it contains has been thoroughly verified. The text was complete and correct at the time of printing. Because of the ongoing development of products, the content of the manual may change without notice. Bosch Security Systems accepts no liability for damage resulting directly or indirectly from faults, incompleteness, or discrepancies between the manual and the product described.

1.2 Legal Information

Copyright

This manual is the intellectual property of Bosch Security Systems, Inc. and is protected by copyright. All rights reserved.

Trademarks

All hardware and software product names used in this document are likely to be registered trademarks and must be treated accordingly.

1.3 Safety Precautions

In this manual, the following symbols and notations are used to draw attention to special situations:



Danger!

High risk: This symbol indicates an imminently hazardous situation such as “Dangerous Voltage” inside the product. If not avoided, this will result in an electrical shock, serious bodily injury, or death.



Warning!

Medium risk: Indicates a potentially hazardous situation. If not avoided, this may result in minor or moderate injury.



Caution!

Low risk: Indicates a potentially hazardous situation. If not avoided, this may result in property damage or risk of damage to the unit.



Notice!

This symbol indicates information or a company policy that relates directly or indirectly to the safety of personnel or protection of property.

1.4 Important Safety Instructions

Read, follow, and retain all of the following safety instructions. Heed all warnings on the unit and in the operating instructions before operation.

**Caution!**

TO REDUCE THE RISK OF ELECTRIC SHOCK, DISCONNECT THE POWER SOURCE WHILE INSTALLING THE CAMERA.

**Caution!**

Installation must be made by qualified personnel and conform to ANSI/NFPA 70 (the National Electrical Code® (NEC)), Canadian Electrical Code, Part I (also called CE Code or CSA C22.1), and all applicable local codes. Bosch Security Systems, Inc. accepts no liability for any damages or losses caused by incorrect or improper installation.

**Warning!**

INSTALL EXTERNAL INTERCONNECTING CABLES IN ACCORDANCE TO NEC, ANSI/NFPA70 (FOR US APPLICATION) AND CANADIAN ELECTRICAL CODE, PART I, CSA C22.1 (FOR CAN APPLICATION) AND IN ACCORDANCE TO LOCAL COUNTRY CODES FOR ALL OTHER COUNTRIES. BRANCH CIRCUIT PROTECTION INCORPORATING A 20 A, 2-POLE LISTED CIRCUIT BREAKER OR BRANCH RATED FUSES ARE REQUIRED AS PART OF THE BUILDING INSTALLATION. A READILY ACCESSIBLE 2-POLE DISCONNECT DEVICE WITH A CONTACT SEPARATION OF AT LEAST 3 mm MUST BE INCORPORATED.

**Caution!**

Compliance with EN50130-4 Alarm Standard – CCTV for Security Applications

To meet the requirements of the EN50130-4 Alarm Standard, an ancillary uninterruptable power (UPS) supply is necessary. The UPS must have a **Transfer Time** between 2–6 ms and a **Backup Runtime** of greater than 5 seconds for the power level as specified on the product datasheet.

Adjustment of controls - Adjust only those controls specified in the operating instructions. Improper adjustment of other controls may cause damage to the unit.

Power cord and plug protection - Protect the power cord from being walked on or pinched, particularly at plugs, and at the point of exit from the device.

For units intended to operate with 230 VAC, 50 Hz, the input and output power cord must comply with the latest versions of *IEC Publication 227* or *IEC Publication 245*.

Power disconnect - Units with or without ON/OFF switches have power supplied to the unit whenever the power cord is inserted into the power source; however, the unit is operational only when the ON/OFF switch is in the ON position. The power cord is the main power disconnect device for switching off the voltage for all units.

Servicing - Do not attempt to service this device yourself. Refer all servicing to qualified service personnel.

1.5 Important Notices

**Notice!**

This device is intended for use in public areas only.

U.S. federal law strictly prohibits surreptitious recording of oral communications.



Accessories - Do not place this unit on an unstable stand, tripod, bracket, or mount. The unit may fall, causing serious injury and/or serious damage to the unit. Use only with the cart, stand, tripod, bracket, or table specified by the manufacturer. When a cart is used, use caution and care when moving the cart/apparatus combination to avoid injury from tip-over. Quick stops, excessive force, or uneven surfaces may cause the cart/unit combination to overturn. Mount the unit per the manufacturer's instructions.

All-pole power switch - Incorporate an all-pole power switch, with a contact separation of at least 3 mm in each pole, into the electrical installation of the building. If it is needed to open the housing for servicing and/or other activities, use this all-pole switch as the main disconnect device for switching off the voltage to the unit.

Camera signal - Protect the cable with a primary protector if the camera signal is beyond 140 feet, in accordance with *NEC800 (CEC Section 60)*.

Coax grounding:

- Ground the cable system if connecting an outside cable system to the unit.
- Connect outdoor equipment to the unit's inputs only after this unit has had its grounding plug connected to a grounded outlet or its ground terminal is properly connected to a ground source.
- Disconnect the unit's input connectors from outdoor equipment before disconnecting the grounding plug or grounding terminal.
- Follow proper safety precautions such as grounding for any outdoor device connected to this unit.

U.S.A. models only - *Section 810 of the National Electrical Code, ANSI/NFPA No.70*, provides information regarding proper grounding of the mount and supporting structure, grounding of the coax to a discharge unit, size of grounding conductors, location of discharge unit, connection to grounding electrodes, and requirements for the grounding electrode.

Electronic Surveillance - This device is intended for use in public areas only. U.S. federal law strictly prohibits surreptitious recording of oral communications.

Environmental statement - Bosch has a strong commitment towards the environment. This unit has been designed to respect the environment as much as possible.

Electrostatic-sensitive device - Use proper CMOS/MOS-FET handling precautions to avoid electrostatic discharge.

NOTE: Wear required grounded wrist straps and observe proper ESD safety precautions when handling the electrostatic-sensitive printed circuit boards.

Fuse rating - For protection of the device, the branch circuit protection must be secured with a maximum fuse rating of 16A. This must be in accordance with *NEC800 (CEC Section 60)*.

Moving - Disconnect the power before moving the unit. Move the unit with care. Excessive force or shock may damage the unit and the hard disk drives.

Outdoor signals - The installation for outdoor signals, especially regarding clearance from power and lightning conductors and transient protection, must be in accordance with *NEC725* and *NEC800 (CEC Rule 16-224 and CEC Section 60)*.

Permanently connected equipment - Incorporate a readily accessible disconnect device external to the equipment.

Pluggable equipment - Install the socket outlet near the equipment so it is easily accessible.

Power resupply - If the unit is forced to power down due to exceeding the specified operating temperatures, disconnect the power cord, wait for at least 30 seconds, and then reconnect the power cord.

Power lines - Do not locate the unit near overhead power lines, power circuits, or electrical lights, nor where it may contact such power lines, circuits, or lights.

SELV - All the input/output ports are Safety Extra Low Voltage (SELV) circuits. SELV circuits should only be connected to other SELV circuits.

Because the ISDN circuits are treated like telephone-network voltage, avoid connecting the SELV circuit to the Telephone Network Voltage (TNV) circuits.

System ground/Safety ground

System (video) ground is indicated by the symbol .

Safety (power) ground is indicated by the symbol .

The system ground is only used to comply with safety standards or installation practices in certain countries. Bosch does **not** recommend connecting system ground to safety ground unless it is explicitly required. However, if the system ground and safety ground are connected and grounding loops are causing interference in the video signal, use an isolation transformer (available separately from Bosch).



Caution!

Connecting System ground to Safety ground may result in ground loops that can disrupt the CCTV system.



Notice!

Video loss is inherent to digital video recording; therefore, Bosch Security Systems cannot be held liable for any damage that results from missing video information.

To minimize the risk of losing information, we recommend multiple, redundant recording systems, and a procedure to back up all analog and digital information.



Notice!

This is a **class A** product. In a domestic environment this product may cause radio interference, in which case the user may be required to take adequate measures.



Notice!

Ce produit est un appareil de **Classe A**. Son utilisation dans une zone résidentielle risque de provoquer des interférences. Le cas échéant, l'utilisateur devra prendre les mesures nécessaires pour y remédier.

1.6 FCC & ICES compliance

FCC & ICES Information

(U.S.A. and Canadian Models Only)

This device complies with part 15 of the FCC Rules. Operation is subject to the following conditions:

- this device may not cause harmful interference, and
- this device must accept any interference received, including interference that may cause undesired operation.

NOTE: This equipment has been tested and found to comply with the limits for a **Class A** digital device, pursuant to Part 15 of the FCC Rules and ICES-003 of Industry Canada. These limits are designed to provide reasonable protection against harmful interference when the equipment is operated in a **commercial environment**. This equipment generates, uses, and radiates radio frequency energy and, if not installed and used in accordance with the instruction manual, may cause harmful interference to radio communications. Operation of this equipment in a residential area is likely to cause harmful interference, in which case the user will be required to correct the interference at his expense.

Intentional or unintentional modifications, not expressly approved by the party responsible for compliance, shall not be made. Any such modifications could void the user's authority to operate the equipment. If necessary, the user should consult the dealer or an experienced radio/television technician for corrective action.

The user may find the following booklet, prepared by the Federal Communications Commission, helpful: How to Identify and Resolve Radio-TV Interference Problems. This booklet is available from the U.S. Government Printing Office, Washington, DC 20402, Stock No. 004-000-00345-4.

1.7 UL Certification

UL Disclaimer

Underwriter Laboratories Inc. ("UL") has not tested the performance or reliability of the security or signaling aspects of this product. UL Certification does not cover the performance or reliability of the security or signaling aspects of this product.

UL MAKES NO REPRESENTATIONS, WARRANTIES, OR CERTIFICATIONS WHATSOEVER REGARDING THE PERFORMANCE OR RELIABILITY OF ANY SECURITY OR SIGNALING-RELATED FUNCTIONS OF THIS PRODUCT.

1.8 Explosion Protected Certifications

Camera for Use in Hazardous Locations

Bosch Security Systems

VEN-650 camera models

12-24 VDC, 12-24 VAC, Class 2, 20 watts (1.5A maximum)



LISTED

File # E333679

Class I, Groups C and D; Class II, Groups E, F, and G; Class III

Class I, Zone 1, AEx db IIB T6; Ex db IIB T6 X

Zone 21, AEx tb IIIC T85°C Db

Ex tb IIIC T85°C Db X

IP68, Type 4X, Type 6P

ATEX Certification

DEMKO 10 ATEX 0948139X

0539 (Ex) II 2 G Ex db IIB T6 Gb

(Ex) II 2 D Ex tb IIIC T85°C Db

**IECEX Certification**

IECEX UL 10.0010X

Ex db IIB T6 Gb; Ex tb IIIC T85°C Db

Relevant standards associated with the ATEX and IECEX certifications.

EN 60079-0:2012+A11:2013

EN 60079-1:2014

EN 60079-31:2014

IEC 60079-0:2011 Edition 6

IEC 60079-1:2014 Edition 7

IEC 60079-31:2013 Edition 2

1.9 Joint Information

To obtain more information about the flameproof joints, please contact Bosch Security Systems.

Joint-Threaded (All Models)	Designation	Pitch	Full Threads Engaged	Depth of Engagement
Back Cover to Junction Box	M 103	1.5 mm	7 minimum	14.5 mm
Housing to Junction Box	M 103	2 mm	7 minimum	18.5 mm
Supply Opening Blanking Element to Junction Box (four openings provided)	3/4-14 NPT	N/A	5	N/A
Housing to Front Cover	M 103	2 mm	8 minimum	19.5 mm

**Warning!**

To reduce the risk of ignition of hazardous atmospheres, conduit runs must have a sealing fitting connected to the wall of the enclosure.

**Warning!**

DO NOT OPEN WHEN AN EXPLOSIVE ATMOSPHERE MAY BE PRESENT.

1.10 Warranty / Limitation of Liability

The unit has a 3 year warranty.

BOSCH Security Systems warrants that its products, at the time of shipment by BOSCH Security Systems, are free from defect in material or workmanship under normal use and service for the respective warranty periods specified in the applicable Price Schedule or as otherwise published.

To assure conformance with operating limitations, Buyer should refer to the applicable data sheet.

The warranty is void (i) if the Product is not operated in conformance with installation, environmental, mechanical or electrical requirements, or within thermal stress limits, or (ii) to the extent that any malfunction is the result of misuse, abuse, vandalism, neglect, improper installation or application, alteration, accident, or negligence in use, storage, transportation, or handling or if the original identification markings on the product have been removed, defaced or altered, lightning, electricity, water, fire, environment or other hazard, or act of God, or other impact outside of normal operating guidelines.

The foregoing warranty is subject to Buyer's (i) promptly written claim and (ii) timely provision to BOSCH Security Systems of an opportunity to inspect and test the Product claimed to be defective. Such inspection may be on Buyer's premises and/or BOSCH Security Systems may request the return of the Product at Buyer's expense. However, BOSCH Security Systems shall not be responsible for packing, inspection, or labor costs in connection with the return of Product. No Product shall be accepted for warranty service that is not accompanied by a Return Authorization issued by BOSCH.

The liability of BOSCH Security Systems hereunder or otherwise is solely and exclusively limited to replacement (new or refurbished Product), repair, or credit of the amortized purchase price, as BOSCH Security may elect, for any Product which is returned by Buyer during the applicable warranty period, or services for which timely notice of defect has been given by Buyer, and which are found by BOSCH Security to be subject to adjustment under this warranty.

BOSCH Security System's warranty shall not be enlarged, diminished, or affected by, and no obligation or liability shall arise or grow out of BOSCH Security's rendering or technical advice, facilities, or services in connection with Buyer's order to the products furnished hereunder.

For more information about the warranty on this product, see the Warranty Repair section on Bosch's Customer Care web page at www.boschsecurity.us/en-us/Service/CustomerCare.

1.11 Customer Support and Service

If this unit needs service, contact the nearest Bosch Security Systems Service Center for authorization to return and shipping instructions.

Service Centers

USA

Telephone: 800-366-2283 or 585-340-4162

Fax: 800-366-1329

Email: cctv.repair@us.bosch.com

Customer Service

Telephone: 888-289-0096

Fax: 585-223-9180

Email: security.sales@us.bosch.com

Technical Support

Telephone: 800-326-1450

Fax: 585-223-3508 or 717-735-6560

Email: technical.support@us.bosch.com

Repair Center

Telephone: 585-421-4220

Fax: 585-223-9180 or 717-735-6561

Email: security.repair@us.bosch.com

Canada

Telephone: 514-738-2434

Fax: 514-738-8480

Europe, Middle East & Africa Region

Please contact your local distributor or Bosch sales office. Use this link:

<http://www.boschsecurity.com/startpage/html/europe.htm>

Asia Pacific Region

Please contact your local distributor or Bosch sales office. Use this link:

http://www.boschsecurity.com/startpage/html/asia_pacific.htm

More Information

For more information please contact the nearest Bosch Security Systems location or visit www.boschsecurity.com

2 Product Description

The EX65 Explosion Protected Camera is a high-performance, smart surveillance camera for explosive environments. Utilizing DINION 2X imaging, the camera offers unrivaled image quality in the worst lighting conditions. Electropolished 316L stainless steel construction ensures the ultimate environmental protection available today. A single pre-assembled unit with an integrated junction box, the EX65 is designed to be easy to install. Through any of the four (4) 3/4 in. conduit entries (M20 adapter included with PAL versions), connections are made to the convenient terminal block; there is also space for any additional wiring. Also accessible through the junction box is the optional fiber optic module that provides versatility for longer cable runs where electromagnetic interference is a concern.

2.1 Unpacking

- This equipment should be unpacked and handled with care. Check the exterior of the packaging for visible damage. If an item appears to have been damaged in shipment, notify the shipper immediately.
- Verify that all the parts listed in the Parts List below are included. If any items are missing, notify your Bosch Security Systems Sales or Customer Service Representative.
- Do not use this product if any component appears to be damaged. Please contact Bosch Security Systems in the event of damaged goods.
- The original packing carton is the safest container in which to transport the unit and must be used if returning the unit for service. Save it for possible future use.

2.2 Parts List

2.2.1 Parts Included with the Product

Quantity	Item
1	EX65 Explosion Protected Camera
1	Sunshield
4	M4 bolts with washers for sunshield
1	1.5 mm hex key
1	Multi-use tool
1	Instruction Manual

2.2.2 User-supplied Parts

Quantity	Item
3	M6 x 1.0 x 16 mm bolts with lock washers
1	Bottle of Jet-Lube® NCS-30 grease (as needed)
1	Tube of Molykote® BG 20 grease (as needed)
1	Tube of LA-CO Slic-Tite® Paste with PTFE (as needed)

3 Planning

Refer to the information below before installing the unit. This section provides dimensional information and guidelines to help plan your installation.

3.1 Dimensional Drawings

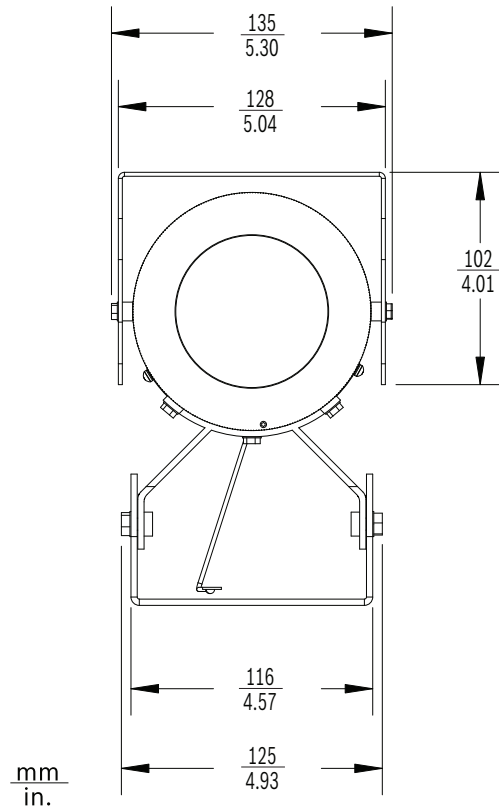


Figure 3.1: Front View

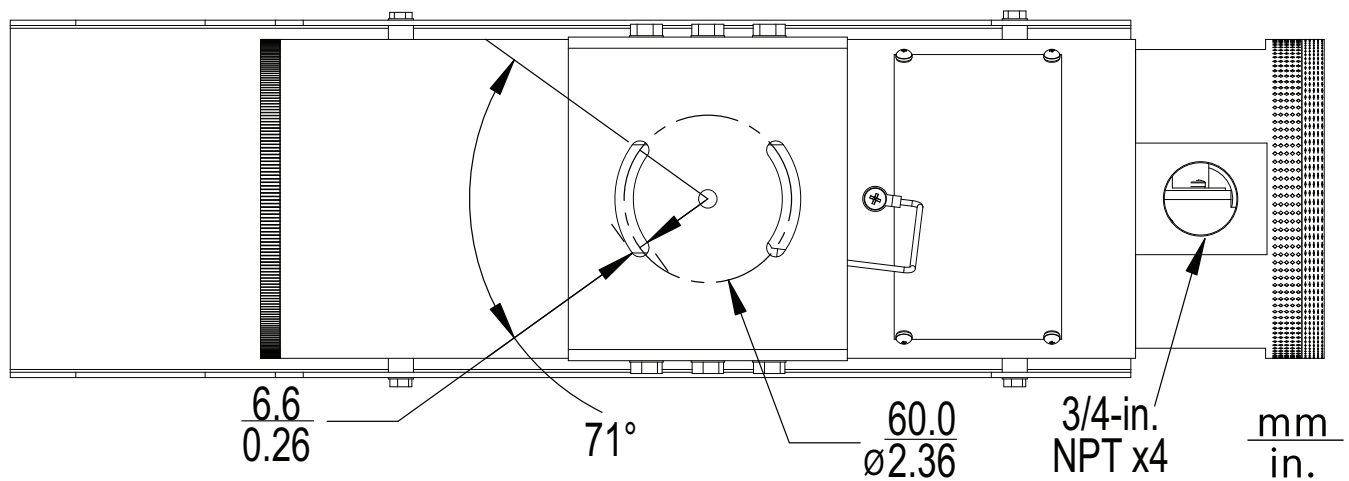


Figure 3.2: Bottom view

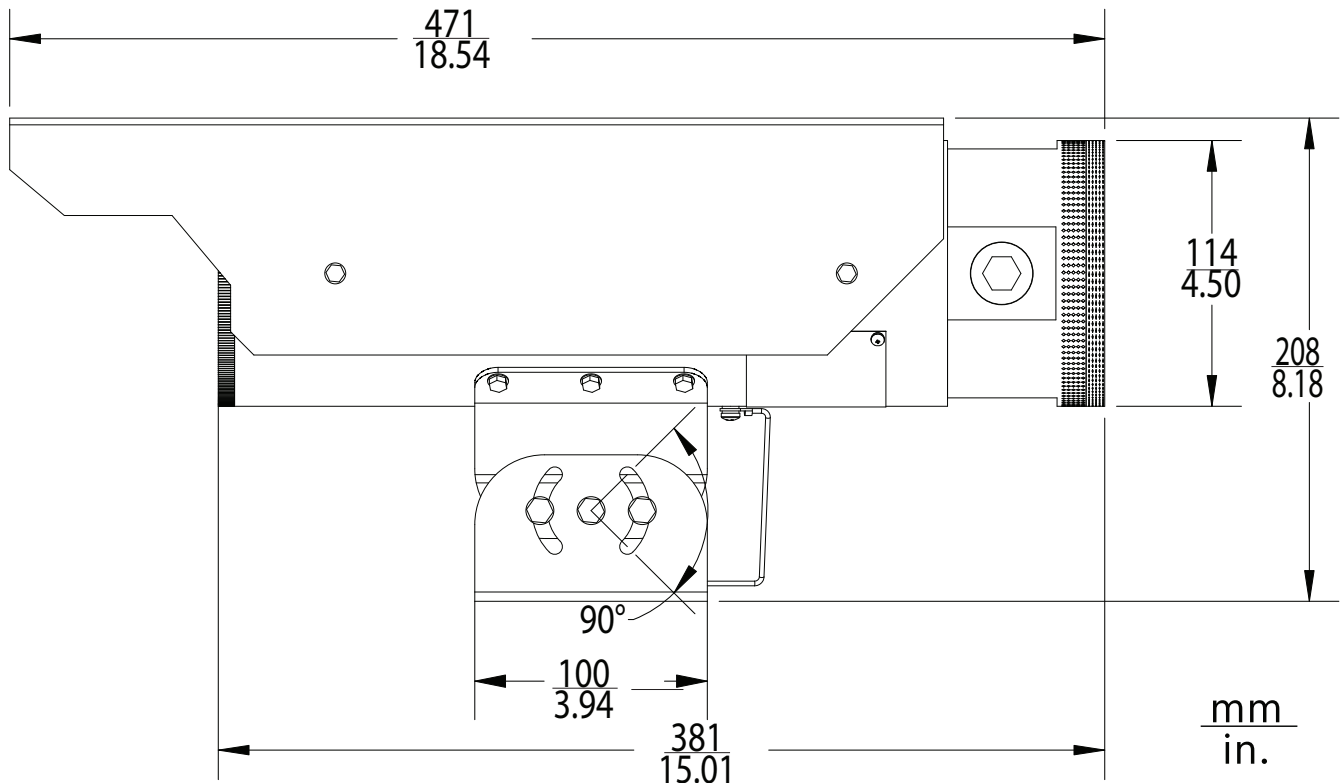


Figure 3.3: Side view

3.2

Initial Preparations

- Determine the operating voltage at the installation site. The circuit board automatically configures for 12 VDC or 24 VAC operation. The unit can receive an input voltage range of 10.5 VDC to 40 VDC or 12 VAC to 28 VAC without damage, but it is recommend to stay within the voltage range specified in *Explosion Protected Certifications, page 9*.
- All units have been tested prior to shipment. It is advisable to check the unit's operation before installation.



Caution!

It is recommended that the installer wear an ESD strap or discharge any static electricity to ground before handling any electronic components.



Notice!

To avoid excessive moisture saturation inside the housing, limit the amount of time that the unit housing is open. Bosch recommends that the unit housing be open for no more than five (5) minutes.

4 Installation Overview

This chapter details the installation guidelines for the EX65. It is important that you consider these steps.



Warning!

Do not apply power to the unit in an explosive environment unless the housing is fully installed, the front and back caps are tightened, and all openings are appropriately plugged and sealed. Disconnect power before servicing or disassembling the unit.

Based on the explosion-protected requirements of the installation location, determine the appropriate installation method and follow all local guidelines and laws. It is important to keep the following in mind during installation:

- It is advisable to set up the camera lens prior to installation as lens adjustments require the unit to be opened, see *Configuration*, page 24.
- The front and back end caps of the unit must be removed for access to the internal electronics or to adjust the lens. The set screws on the caps are tightened at the factory. It is easier to remove the front end cap with the sunshield removed.
- When tightening the end caps, ensure that the threads are clean and lubricated with Jet-Lube® NCS-30 grease.
- Before tightening the end caps, ensure that the o-rings are clean and lubricated with Molykote® BG 20 grease (from Dow Corning).
- Ensure that all 3/4-in. NPT plugs are securely tightened in the 3/4-in. NPT conduit openings and sealed with LA-CO Slic-Tite® Paste with PTFE, apply per manufacturer's instructions on the label.
- Ensure that the unit is wired and sealed appropriately either with a conduit seal or a gland and cable rated for the intended environment. Use LA-CO Slic-Tite® Paste with PTFE thread sealant on all conduit or gland threads.
- Carefully follow all manufacturers' instructions for applying grease and paste products.
- All cable entry devices shall be ATEX/IECEx-certified for Ex d IIB T6 Gb and Ex tb IIIC T85°C Db IP67, rated at least 85 °C (185 °F), suitable for the conditions of use and installed correctly.
- All unused conduit openings shall have a 3/4-14 in. NPT stopping plug certified for Class I, Groups C and D; Class II, Groups E, F, and G; and Class III; Class I, Zone 1, AEx d IIB T6; Ex d IIB T6 X hazardous locations, as supplied with the unit.
- Type 'd' protection requires that the hexagon set screws (M3 X 0.5-6g/6H) are considered special fasteners. When installed, the set screws must not protrude from the threaded holes.
- The maximum surface temperature of the unit with aluminum housing will never reach 85 °C when used throughout the ambient operating range of –50 °C to 60 °C (–58 °F to 140 °F).
- If starting up the unit below –40 °C, there may be a delay (up to 30 minutes) between when power is applied to the camera and when video output is available.
- The joint between the junction box and housing is secured by a thread locker for permanent securement. This joint shall not be removed because there may be damage to the flame path threads.
- The device was subjected to the resistance to impact test at 2 J. It shall be installed where it will not be subjected to impact.
- For ambient temperatures below –10 °C, use field wiring suitable for the minimum ambient temperature.

Note: This product is serialized to ensure traceability.

5 Connections

5.1 Power Cable Requirements


Warning!

Before proceeding, disconnect the power from the power supply cable. Ensure that the voltage of the unit matches the voltage and type of the power supply being used.

Connect power from a 24 VAC class 2 power supply. Use AWG 16 to 22 stranded wire or AWG 16 to 26 solid wire; cut back 5 mm (0.2 in.) of insulation.

Cable size	Stranded wire: AWG 16 to 22 Solid wire: AWG 16 to 26
Cable shape	Round
Conductors	2-conductor version
Environmental	Outdoor rated

5.1.1 Wire Distance Guide

This table lists the maximum wire distances for 14, 16, and 18 AWG wires connected to a 24 VAC camera.

	Watts	14 AWG (2.5 mm)	16 AWG (1.5 mm)	18 AWG (1.0 mm)
All Models	20	289 m (949 ft)	182 m (597 ft)	114 m (376 ft)

5.2 Coax Cable Requirements

Cable type	RG-59/U for runs < 300 m (1000 ft) RG-11/U for runs < 600 m (2000 ft)
Cable size	Outside diameter between 4.6 mm to 7.9 mm (0.181 in. to 0.312 in.)
Cable shape	Round
Shield	> 93% braided copper shield
Center conductor	Stranded copper center
DC resistance	< 15 Ohm/1000 m (RG-59/U) < 6 Ohm/1000 m (RG-11/U)
Cable impedance	75 Ohm
Agency rating	UL
Environmental	Outdoor rated
Temperature rating	> 80 degrees C
Sources	Belden 9259

5.3 Alarm Cable Requirements

The terminal block contains one Alarm Out connection.

Max. wire diameter	AWG 22-28 for both stranded and solid
Alarm output relay switching capability	Max voltage 30 VAC or +40 VDC. Max 0.5 A continuous, 10 VA.

5.4 Fiber Optic Cable Requirements

Certain models allow you to transmit video over an analog multimode fiber instead of using a coax cable.

Multimode	
Fiber Type	50/125 µm, 62.5/125 µm, low loss multimode glass fiber
Maximum Distance	4 km (2.5 miles)
Video Bandwidth	5 Hz to 10 MHz
Wavelength	850 nm
Requirement	Bosch LTC 4629 Fiber Receiver at controller end of system
Terminal Connector	ST

5.5 Making the Connections

All required connections are accessible by removing the rear end cap.

**Notice!**

Take care not to drop the end caps to prevent damage to the cap threads.

**Notice!**

Ensure that all wiring/cabling has enough slack inside the housing so that you can slide the assembly out of the housing without damaging the wiring/cabling or any internal components of the device.

Refer to the following figure when making connections:

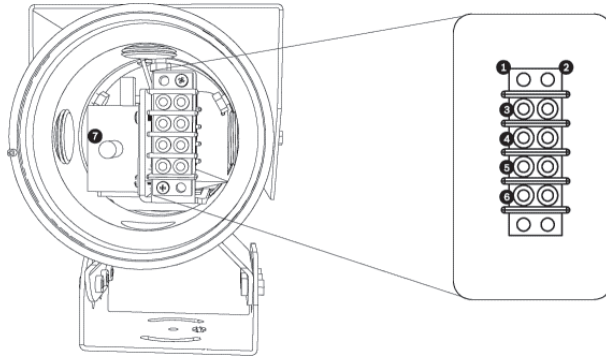


Figure 5.1: Cable Connection Terminators

1	Terminals for incoming power and outgoing alarm cables
2	Internal camera use. DO NOT connect any cables to these terminals
3	Power In (12-24 VDC/12-24 VAC)
4	Power In (12-24 VDC/12-24 VAC)
5	Alarm Out
6	Alarm Out
7	BNC connector or Fiber Optic ST connector (dependent on model)



Caution!

Connections to the terminal block must be made to the terminals on the left side. Do not make connections to the terminals on the right side of the block.

To make connections, follow these steps.

1. Loosen the set screws on the rear end cap using the supplied hex key. Loosen the rear end cap using the multi-use tool. To prevent damage to the o-ring, for every half turn counterclockwise turn back one quarter-turn clockwise.

Note: To prevent damage to the cap threads, take care not to drop the end caps.

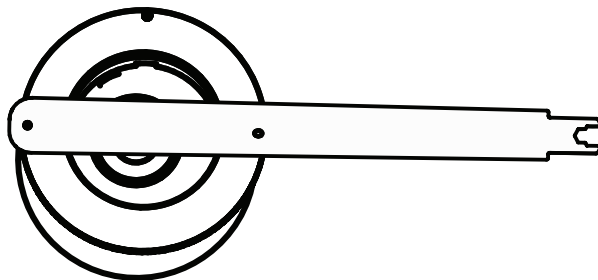


Figure 5.2: Removal of end cap with multi-use tool

2. Unscrew the rear end cap by hand. Set the cap aside.
3. Feed power, alarm (if used), and coaxial cables through any one of the four 3/4-in. conduit entries.

4. Connect one lead of the power cable to terminal 3 and the other lead to terminal 4.

Note: The power in terminals are polarity insensitive.

5. Connect the alarm out cable to terminal 5 and 6.

6. For analog video models, connect the video coax cable with a male BNC connector to terminal 7.

Note: A UTP adapter (VDA-455UTP) is available as an optional accessory to allow a UTP video cable to be connected to the BNC connector.

For fiber optic video models, connect a terminated fiber optic cable to the female ST connector.

If the optional OFC kit has been installed, connect a terminated fiber optic cable to the female ST connector.

9. Clean and grease the O-ring and threads before replacing the end cap. Refer to *Installation Overview, page 18*.

10. Replace the end cap.

11. Tighten the end cap using the multi-use tool. Ensure that the O-ring is properly seated. After tightening, ensure that there is no gap between the cap and the body of the housing.

12. Tighten the set screws on the end cap using the supplied hex key. Set screws must not protrude from the threaded hole after tightening.

See also

- *Installation Overview, page 18*
- *Installation Overview, page 18*

6 Configuration

**Notice!**

Take care not to drop the end caps to prevent damage to the cap threads.

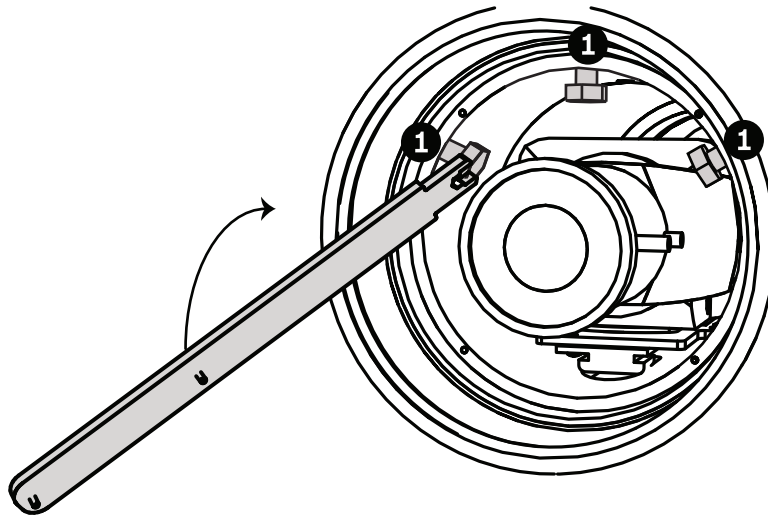
Making Adjustments to the Camera Lens

You must remove the front end cap to make lens adjustments. You may need to remove the inner bracket assembly for easier access to the lens controls.

Camera adjustments may be done remotely via the Bilinx “through the coax” interface or directly on the camera itself by removing the inner bracket assembly. When the Bilinx communications link is active, the buttons on the cameras are disabled. Refer to *Operation*, page 29 for more information.

Note: You may need to remove the sunshield to remove the front end cap more easily.

1. Loosen the set screw on the front end cap using the supplied hex key.
2. Loosen the front end cap using the supplied multi-use tool. To prevent damage to the o-ring, for every half turn counterclockwise turn back one quarter turn clockwise.
3. Unscrew the front end cap by hand.
4. To adjust the lens and to access the DINION menu buttons:
 - Using the supplied multi-use tool, loosen the three (3) bolts (Item 1, below) that hold the inner mounting bracket assembly.



- Pull the assembly out of the housing.

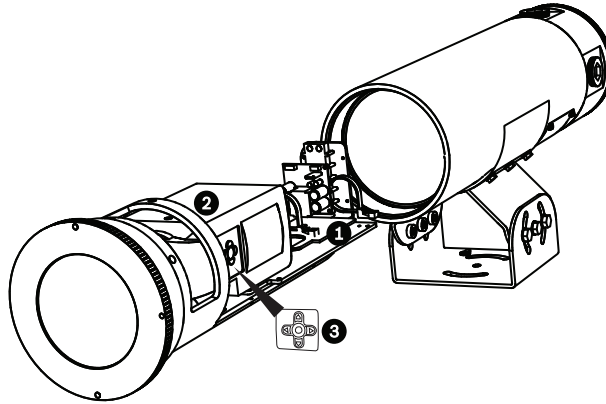


Figure 6.1: Camera pulled from housing

1	Inner mounting bracket assembly
2	DINION camera
3	DINION menu buttons

5. Loosen the lens set screws for focus/zoom adjustments.
6. Use the set screw marked **N** $\leftarrow \rightarrow \infty$ to adjust image focus.
 - Turn the set screw to the left to focus toward (**N**) (near) (zoom in).
 - Turn the set screw to the right to focus toward (**F**) (far) / infinite (∞) (zoom out).
7. Use the set screw marked **T** $\leftarrow \rightarrow$ **W** to adjust the telephoto or wide-angle settings.
 - Turn the set screw to the left for a telephoto (tight) focal length
 - Turn the set screw to the right for a wider focal length.
8. Re-tighten the lens set screws after focus adjustments have been completed.
9. To make adjustments to an EX65 Analog model using the DINION 2X Main menu for a more detailed setup, refer to *Operation*, page 29.
10. Slide the inner mounting bracket assembly back into the camera housing and ensure that it locks into place at the back of the housing. The bracket should not rotate and the camera should be completely level.
11. Using a 10 mm wrench, tighten the three (3) bolts to secure the inner mounting bracket assembly.
9. Clean and grease the O-ring and threads before replacing the end cap. Refer to *Installation Overview*, page 18.
10. Replace the end cap.
11. Tighten the end cap using the multi-use tool. Ensure that the O-ring is properly seated. After tightening, ensure that there is no gap between the cap and the body of the housing.
12. Tighten the set screws on the end cap using the supplied hex key.
Set screws must not protrude from the threaded hole after tightening.

See also

- *Installation Overview*, page 18

7 Mounting

7.1 Mounting the Unit

Follow all local codes with respect to the wiring and installation of explosion protected housings.

**Caution!**

Ensure the selected location is protected from falling objects, accidental contact with moving objects, and unintentional interference from personnel. Follow all applicable building codes.

The following installation guidelines must be followed:

- Locate the unit such that it cannot be easily interfered with, either intentionally or accidentally.
- Select mounting hardware and a mounting surface capable of supporting the combined weight of the equipment under all expected conditions of vibration and temperature.
- Secure all cabling.

The unit can be mounted to a compatible Bosch bracket with M6 bolts, or to any purpose-built bracket using M6 or 1/4 in.–20 bolts. **Note:** Ensure that a fabricated bracket is capable of supporting at least three times the weight of the system.

The stainless steel mount adapter (EXS-ADPT) that allows installers to mount an EXTEGRA IP 9000/EX65 device onto one of a variety of mounting brackets originally designed for the MIC series of cameras. Installers secure the adapter to a MIC Wall Mount Bracket (MIC-WMB), and then secure the mounting cradle of the device to the mount adapter. The MIC-WMB can be mounted to any of the following MIC mounting brackets:

- MIC Spreader Plate (MIC-SPR) for installation on a wall
- MIC Corner Mount Bracket (MIC-CMB) for installation in a corner
- MIC Pole Mount Bracket (MIC-PMB) for installation on the side of a CCTV pole.

Refer to the datasheet “MIC Mounting Brackets and Other Accessories” for details about these mounts.

To install the camera onto a MIC mounting bracket, follow these steps:

1. Install the chosen MIC mounting bracket.
2. Install the MIC-WMB.
3. Mount the EXS-ADPT to the MIC-WMB using the four (4) supplied screws.
4. Align the three (3) holes in the mounting cradle to any three (3) holes (in a line) in the EXS-ADPT.
5. Install the center bolt first, and then rotate the camera in the desired direction for surveillance. When the camera is in the desired position, install the other two (2) bolts. Proceed to step 6 below.

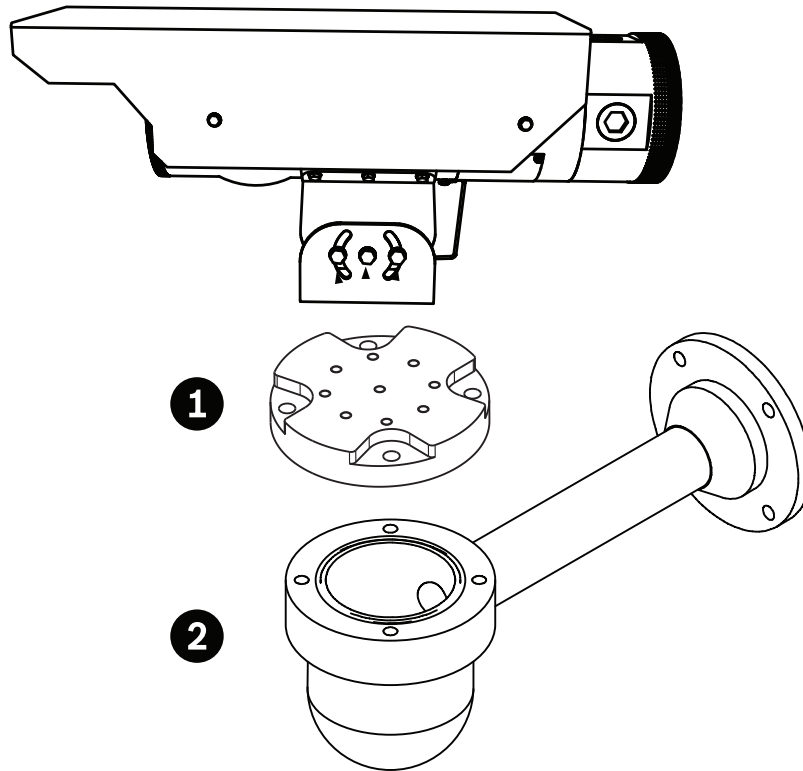


Figure 7.1: EXTEGRA IP 9000/EX65 device to EXS-ADPT (1) to MIC Wall Mount Bracket (MIC-WMB) (2)

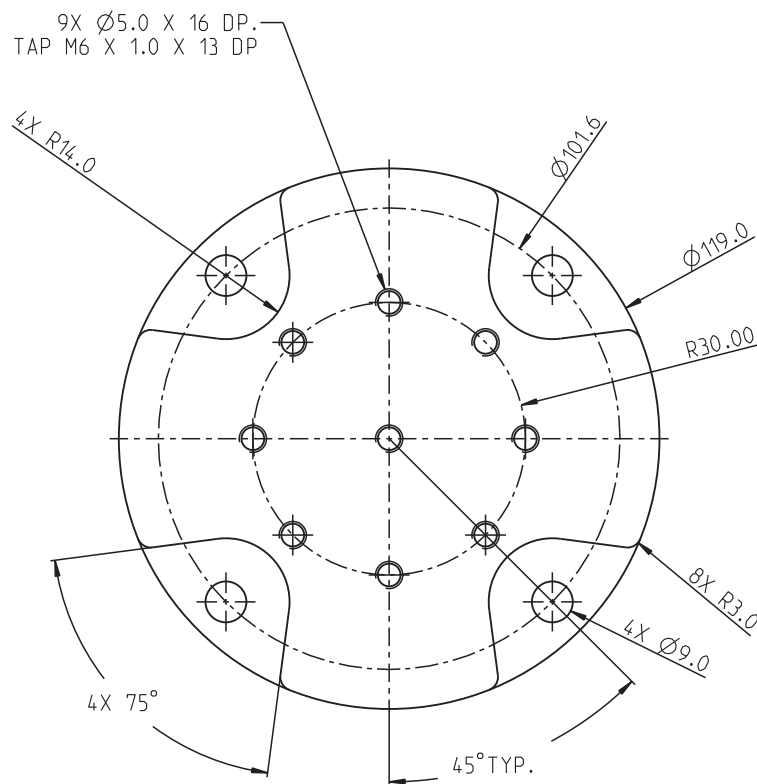


Figure 7.2: EXS-ADPT Mount Bolt Hole Pattern

To install the camera directly to a mounting surface:

1. Select a mounting surface and, if needed, prepare the surface by pre-drilling and tapping three M6 x 1.0 x 20 mm holes in a line that are 30 mm apart center to center and in line with the desired surveillance target.
2. Allocate three stainless steel M6 x 1.0 x 16 mm bolts with lock washers and ensure that the mounting surface and the threads of bolts are clean and free of debris.
3. (Optional) Apply a few drops of a medium-strength thread-locking agent to the bolts per the manufacturer's instructions.
4. Secure the mounting cradle (item 1 in the following figure) to the mounting surface with the M6 x 1.0 x 16 mm bolts and lock washers using a 10 mm wrench or the multi-use tool. Do not tighten fully.

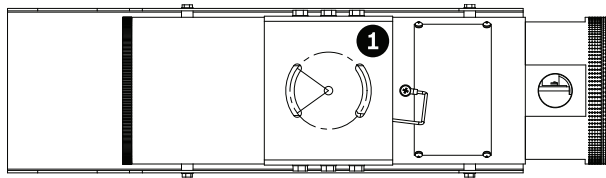
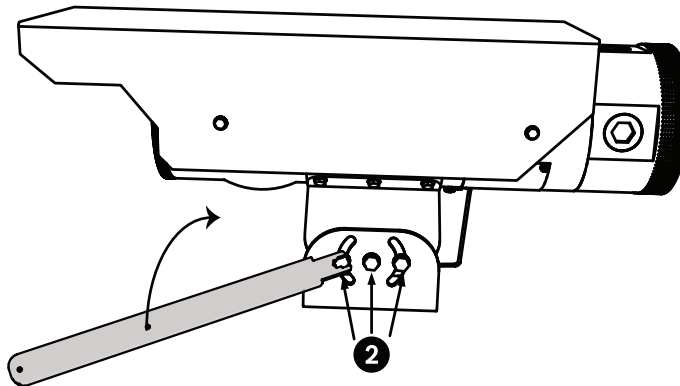


Figure 7.3: Bottom View with Mounting Cradle detail

5. Slightly loosen the six M6 bolts on both sides of the mounting cradle, using a 10mm wrench or the multi-use tool, and make directional adjustments to the device so that it is pointing at the desired surveillance target. (See the following figure.)



6. Tighten all mounting bolts to 4.1 to 6.8 N·m (3 to 5 ft-lb).
7. Connect wiring as explained in *Connections*, page 20, and follow all local regulations and laws regarding explosion protected devices.
8. Connect the ground cable, located on the bottom of the housing, to a suitable grounded material (grounded conduit or a ground wire).

7.2

Installing the Sunshield

1. Line up the mounting holes of the sunshield with the tapped holes in the body of the unit.
2. Install the supplied M4 bolts through the sunshield bolt holes into the body of the unit and tighten by hand.
3. Tighten the supplied bolts to 2.0 N m (1.5 ft-lb) using a 7 mm wrench or the multi-use tool.

8 Operation

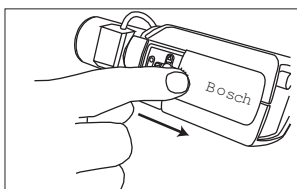
The camera normally provides an optimal picture without the need for further adjustments. Advanced set-up options are available in a menu system for getting the best results under special circumstances. The camera implements your changes immediately so that before and after settings are easily compared.

8.1 Menus

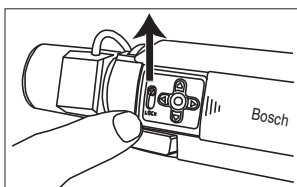
8.1.1 Top level menus

There are two upper level menus: the **Main** menu and the **Install** menu. Both menus have functions that can be selected directly or submenus for more detailed set-up. The **Main** menu allows you to select and set up the picture enhancement functions. The **Install** menu allows you to set the installation settings. To access the menus, follow the steps below.

1. Open the side door panel at the side of the camera.



2. Unlock the back focus locking button.



3. Locate the five navigation keys behind the side door panel.

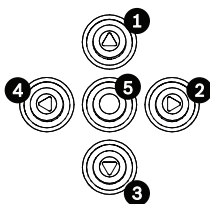


Figure 8.1: Advanced camera setup keypad

Key	Description
1	Up key
2	Right key
3	Down key
4	Left key
5	Menu/Select key (center)

4. Access the appropriate menu:

- To access the **Main** menu, press and hold the center key for less than 1 second. The **Main** menu appears on the monitor. If you are not happy with your changes, you can always recall the default values for the mode.

- To access the **Install** menu, press and hold the center key for more than 2 seconds.

8.1.2

Menu navigation keys

Five keys are used for navigating through the menu system.

- Use the up or down keys to scroll through a menu.
- Use the left or right keys to move through options or to set parameters.
- When in a menu, quickly double-press the menu/select key to restore the selected item to its factory default.
- To close all menus at once, hold down the menu/select key until the menu display disappears or continually select the **Exit** item.

Some menus automatically close after about two minutes; other menus must be closed manually.

8.2

Pre-defined modes

There are six pre-defined modes with settings to make configuration easier. You can select one of the six modes in the Install/Mode submenu. The modes are defined as follows:

1. **24-hour**
Default installation mode to provide stable pictures over a 24-hour period. These settings are optimized for out-of-the-box installation.
2. **Traffic**
Capture high-speed objects using default shutter in variable lighting conditions.
3. **Low light**
Provide extra enhancement, such as AGC and SensUp to make usable pictures in low-light conditions.
4. **Smart BLC**
Settings optimized to capture details in high contrast and extremely bright-dark conditions.
5. **Low noise**
Enhancements are set to reduce picture noise. Useful for conditional refresh DVR and IP storage systems because reducing noise reduces the amount of storage required.
6. **Analog systems**
Use this mode if the camera is connected to a purely analog system (for example, matrix switcher with VCR) or to a CRT monitor. Useful mode for evaluating/demonstrating the camera when it is directly connected to a CRT monitor.

8.3

Camera control communication (Bilinx)

This camera is equipped with a coaxial communications transceiver (also referred to as Bilinx). In combination with VP-CFGSFT, the camera setting can be changed from any point along the coaxial cable. All menus can be accessed remotely giving full control of the camera. With this method of communication it is also possible to disable the local keys on the camera. To avoid loss of communication on an installed camera, the **Communication On/Off** selection is not available while using remote control. This function can only be accessed with the camera buttons. Bilinx communications can only be disabled using the buttons on the camera.

Disabled camera buttons

When the Bilinx communications link is active, the buttons on the camera are disabled.

8.4 Main menu structure

Item	Selection	Description
Mode	Submenu	Sets up operating modes 1 to 6
ALC	Submenu	Video level control
Shutter/AGC	Submenu	Shutter and automatic gain control
Day/Night	Submenu	Day/Night for color/mono operation
Enhance / Dynamic Engine	Submenu	Picture enhancement and performance
Color	Submenu	White balance and color rendition
VMD	Submenu	Video motion detection

8.4.1 Mode submenu

Item	Selection	Description
Mode	1 to 6	Selects operating mode.
Mode ID	Alphanumeric	Mode name (11 characters maximum)
Copy active mode	Available mode numbers	Copies current mode settings to the mode number selected.
Default mode	Submenu	Restores camera to the factory default settings.
EXIT		Returns to main menu.

8.4.2 ALC submenu

Item	Selection	Description
ALC level	-15 to +15	Selects the range within which the ALC will operate. A positive value is more useful for low-light conditions; a negative value is more useful for very bright conditions. Some ALC adjustment may improve scene content when Smart/BLC is enabled.
Peak/average	-15 to +15	Adjusts the balance between peak and average video control. A negative value gives more priority to average light levels; a positive value gives more priority to peak light levels. Video iris lens: choose an average level for best results (peak settings may cause oscillations).
ALC speed	Slow, medium, fast	Adjusts the speed of the video level control loop. For most scenes it should remain at the default value.
DVR/IP Encoder	On, Off	On - The camera output is optimized for connection to a DVR or IP encoder to compensate for compression methods. Off - The camera output is optimized for connection to an analog system (matrix switcher or monitor).
EXIT		Returns to main menu.

8.4.3 Shutter/AGC submenu

Item	Selection	Description
Shutter	AES, FL, Fixed	AES (auto-shutter) - the camera automatically sets the optimum shutter speed. FL - flickerless mode avoids interference from light sources (recommended for video-iris or DC-iris lenses only). FIXED - allows a user defined shutter speed.
Default (AES) shutter or Fixed shutter	1/50 (PAL), 1/60 (NTSC), 1/100, 1/120, 1/250, 1/500, 1/1000, 1/2000, 1/5000, 1/10K	In AES mode, the camera tries to maintain the selected shutter speed as long as the light level of the scene is high enough. In Fixed mode, selects shutter speed.
Actual shutter		Displays the actual shutter value from the camera to help compare lighting levels and optimum shutter speed during set-up.
Gain control	On, Fixed	On - the camera automatically sets the gain to the lowest possible value needed to maintain a good picture. Fixed - sets Fixed AGC value.
Maximum AGC or Fixed AGC	0 to 30 dB	Selects the maximum value the gain can have during AGC operation. Selects the gain setting for Fixed gain operation (0 is no gain).
Actual AGC		Displays the actual AGC value from the camera to help compare gain level with lighting levels and picture performance.
SensUp Dynamic	Off, 2x, 3x, ..., 10x	Selects the factor by which the sensitivity of the camera is increased. When active, some noise or spots may appear in the picture. This is normal camera behavior. It may also cause motion blur on moving objects.
EXIT		Returns to main menu.

8.4.4 Day/Night submenu

Item	Selection	Description
Day/Night	Auto, Color, Monochrome	Auto - the camera switches the IR cut-off filter on and off depending on the scene illumination level. Monochrome - the IR cut-off filter is removed, giving full IR sensitivity. Color - the camera always produces a color signal regardless of light levels.
Switch level	-15 to +15	Sets the video level in Auto mode at which the camera switches to monochrome operation. A low (negative) value means that the camera switches to monochrome at a lower light level. A high (positive) value means that the camera switches to monochrome at a higher light level.
Priority	Motion, Color	In AUTO mode: Color - the camera gives a color image as long as the light level permits. Motion - the camera avoids motion blur as long as the light level permits (it switches to monochrome earlier than it would with Color priority).
IR contrast	Enhanced, Normal	Enhanced - the camera optimizes contrast in applications with high IR illumination levels. Select this mode for IR (730 to 940 nm) light sources and for scenes with grass and green foliage. Normal - the camera optimizes contrast in mono applications with visible light illumination.
Color burst (mono)	On, Off	Off - the color burst in the video signal is switched Off in monochrome mode. On - the color burst remains active even in monochrome mode (required by some DVRs and IP encoders).
EXIT		Returns to main menu.

8.4.5**Enhance / Dynamic Engine submenu**

Item	Selection	Description
Dynamic Engine	Off, XF-DYN, 2X-DYN*, SmartBLC	Off: - turns off all automatic scene detail and enhancements (only recommended for testing). XF-DYN: - extra internal processing is enabled for low-light applications (traffic, etc.). 2X-DYN: - 2X-Dynamic adds dual sensor exposure to the XF-DYN features. In harsh lighting conditions pixels from each exposure are mixed to give a more detailed image (use 2X-DYN when SmartBLC is not required). SmartBLC: - BLC window and weighting factor are automatically defined. Camera dynamically adjusts these for changing light conditions. Includes all the benefits of 2X-DYN.
Autoblack	On, Off	Autoblack On automatically increases the visibility of details even when scene contrast is less than full-range due to mist, fog, etc.
Black level	-50 to +50	Adjusts the black offset level. A low (negative) value makes the level darker. A high (positive) value makes the level lighter and may bring out more detail in the darker areas.
Sharpness	-15 to +15	Adjusts the sharpness of the picture. 0 corresponds to the default position. A low (negative) value makes the picture less sharp. Increasing sharpness brings out more detail. Extra sharpness can enhance the details of license plates, facial features and the edges of certain surfaces.
Dynamic noise reduction	Auto, Off	In AUTO mode, the camera automatically reduces the noise in the picture. This may cause some motion blur on exceptionally fast moving objects immediately in front of the camera. This can be corrected by widening the field of view or selecting Off.
Peak White Invert	On, Off	Use Peak White Invert to reduce glare from the CRT/LCD display. Use in ANPR/LPR applications to reduce headlight glare. (Test on-site to ensure that it does benefit the application and is not distracting for operators of the security system.)
EXIT		Returns to main menu.

8.4.6 Color submenu

Item	Selection	Description
White balance	ATW, AWBhold, Manual	ATW - Auto tracking white balance allows the camera to constantly adjust for optimal color reproduction. AWBhold - Puts the ATW on hold and saves the color settings. Manual - the Red, Green, and Blue gain can be manually set to a desired position.
Speed	Fast, Medium, Slow	Adjusts the speed of the white balance control loop.
Red gain	-5 to +5 -50 to +50	ATW and AWBhold - adjusts the Red gain to optimize the white point. Manual - adjusts the Red gain.
Blue gain	-5 to +5 -50 to +50	ATW and AWBhold - adjusts the B gain to optimize the white point. Manual - adjusts the Blue gain.
Green gain	-50 to +50	Manual - adjusts the Green gain.
Saturation	-15 to +5	Adjusts the color saturation. -15 gives a monochrome image.
EXIT		Returns to main menu.

8.4.7 VMD submenu

Item	Selection	Description
VMD	Off, Silent, OSD	Off - Video Motion Detection (VMD) is off. Silent - video motion generates silent alarm. OSD - video motion generates on-screen text message alarm.
VMD area	Submenu	Select to enter the area set-up menu to define the detection area.
Motion indicator		Indicates the peak of measured motion in the selected area. Press either the right, left or center navigation button to reset.
VMD sensitivity		Sets the sensitivity for motion to the desired level. The longer the white bar, the more motion is required to activate the VMD alarm. Motion above this level activates alarm.
OSD alarm text	Alphanumeric	Text for on-screen display alarm (16 characters maximum).
EXIT		Returns to main menu.

Selecting an area for VMD masking

To set up an area for VMD masking, access the area menu by selecting the **VMD Area** option from the VMD menu. Upon entering the **Area** menu, the current area is displayed with the upper left corner flashing. You can move the flashing corner of the image with the Up, Down, Left, Right arrow keys. Press the Select key to move the flashing cursor to the opposite corner, which can now be moved. Press Select again to freeze the area and exit the area menu.

There is one programmable VMD area.

Note:

When VMD is enabled, normal light fluctuations or environmental factors can contribute to false-positive alarms. Because of this, it is recommended that you do **not** connect the VMD-triggered alarm output of the camera to a monitored alarm system as the false-positive alarms may be considered a nuisance.

8.5**Install menu structure**

Item	Selection	Description
Language	Submenu	Select on-screen display (OSD) language
Lens Wizard	Submenu	Select to optimize the camera-lens combination backfocus point.
Synchronization	Submenu	Sets synchronization parameters
Alarm I/O	Submenu	Program the alarm input and output functionality.
Connections	Submenu	Connection parameters
Test signals	Submenu	Test patterns and texts
Camera ID	Submenu	Select to access ID submenu
Privacy masking	Submenu	Sets up a masking area
Default ALL	Submenu	Returns all settings for all modes to factory defaults

8.5.1**Language submenu**

Item	Selection	Description
Language	English Spanish French German Portuguese Polish Italian Dutch Russian	Displays the menus on the OSD in the chosen language.
EXIT		Returns to Install menu.

8.5.2 Lens Wizard submenu

**Notice!**

These options are set at the factory. There is no need for further modification.

Item	Selection	Description
Lens type	Auto, Manual, DC- iris, Video	Auto: - automatically selects the type of lens. Manual, DC-iris, Video modes: select the matching lens type to force the camera to the correct lens mode.
Detected		Shows the type of lens detected when auto lens detection is used.
Set Backfocus now		Select to fully open the iris. Follow the instructions below for setting the backfocus for your particular lens type. After focusing, the object of interest remains in focus under bright and low light conditions.
Set LVL		Only for video-iris lenses. Adjust the level control on the lens to center the level detector indicator (see below).
EXIT		Returns to Install menu.

8.5.3 Synchronization submenu

Item	Selection	Description
Synchronization	Internal Line lock HV lock, Genlock,	Internal - for free running camera operation. Line lock - to lock to the AC power supply HV lock - locks the camera to the sync signal supplied to the SYNC connector. Genlock - locks the camera's subcarrier to the signal supplied to the SYNC connector.
Horizontal phase	-25 . . 0 . . +25	Adjusts the horizontal phase offset.
Subphase	0, 2 . . . 358	Adjusts the subcarrier phase.
EXIT		Returns to Install menu.

8.5.4 Alarm I/O submenu

Item	Selection	Description
Alarm input	None, high, low	Select none to disable the alarm input. Select active-high or active-low for the alarm input connector.
Alarm action	None, Mode 1 to 6, Mono	Selects the operating mode of the camera when the alarm input is active.

Item	Selection	Description
Alarm output	VMD, External device, Night mode active, Filter toggle	VMD: - output relay closes on VMD alarms. External device: - make the output relay available to remote communication devices. Night mode active: - output relay closes when camera is in monochrome mode. Filter toggle: - output relay closes just before the IR filter starts moving and opens when video level has stabilized (2 to 3 seconds)
EXIT		Returns to Install menu.

8.5.5

Connections submenu

Item	Selection	Description
Sync. input	High Z, 75 ohm	Select 75 ohm if the external sync input is not terminated elsewhere.
Notch filter	On, Off	Switches notch filter on or off. The notch filter can remove a Moiré pattern or color artifacts caused by closely spaced vertical lines or objects (e.g. vertical security bars over windows).
Bilinx Comms.	On, Off	If Off, Bilinx communications is disabled.
Camera buttons	Enable, disable	Enable or disable the camera buttons from working.
Cable compensation	Off, Default, RG59, RG6, Coax12	Cable compensation is used to avoid the need for amplifiers in long distance coaxial connections up to 1000 m (3000 ft). For optimum results select the coaxial cable type used or, if unknown, select default.
Compensation level	0,1,2 . . . +15	Sets the level of cable compensation
EXIT		Returns to Install menu.

8.5.6 Test signal submenu

Item	Selection	Description
Show camera ID	Off, On	Select On to overlay the camera ID on the video test signal.
Test pattern	Color bars 100%, Grayscale 11- step, Sawtooth 2H, Checker board, Cross hatch, UV plane	Select the desired test pattern to help installation and fault-finding.
EXIT		Returns to Install menu.

8.5.7 Camera ID submenu

Item	Selection	Description
Camera ID		Enter a 17-character camera name. Use Left/Right to change position in the string; use up/down to select character. Use Select to exit.
Display ID pos.	Off, Top left, Top right, Bottom left, Bottom right	Select the screen position of the camera ID.
Camera ID border	On, Off	Displays a grey border behind the camera ID to make it easier to read.
MAC address		Shows MAC address (factory set, cannot be changed).
Ticker bars	On, Off	The ticker bar moves continuously to show that the image is live and not frozen or played back.
Display mode ID	Off, Top left, Top right, Bottom left, Bottom right	Displays the camera mode in the selected position on the screen.
EXIT		Returns to Install menu.

8.5.8 Privacy masking submenu

Item	Selection	Description
Pattern	Black, Grey, White, Noise	Selects pattern for all masks.
Mask	1, 2, 3, 4	Four different areas can be masked.

Item	Selection	Description
Active	On, Off	Turns each of the four masks on or off.
Window	Submenu	Select to open a window in which to define the mask area.

Selecting an area for privacy masking

To set up an area for privacy masking, access the area menu by selecting the **Area** option from the privacy masking menu. Upon entering the **Area** menu, the current area is displayed with the upper left corner flashing. You can move the flashing corner of the image with the Up, Down, Left, Right arrow keys. Press the Select key to move the flashing cursor to the opposite corner, which can now be moved. Press Select again to freeze the area and exit the area menu.

There are four programmable privacy mask areas.

8.5.9**Defaults submenu**

Item	Selection	Description
Restore All	No, Yes	Restores all settings of the six modes to their default (factory) values. Select YES, then press the Menu/Select button to restore all values. When completed, the message RESTORED! appears.

9 Troubleshooting

9.1 Customer Service

If a fault cannot be resolved, please contact your supplier or system integrator, or go directly to Bosch Security Systems Customer Service.

9.2 Camera Operation

The following table is intended to help you identify the causes of malfunctions and correct them when possible.

Malfunction	Possible causes	Solution
No image transmission to remote location.	Defective camera.	Connect a local monitor to the camera and check the camera function.
	Faulty cable connections.	Check all cables, plugs, contacts and connections.
	Incorrect cable connections.	Ensure that Video and Sync connections are not reversed. When using DC power, ensure that polarity is correct.
No connection established, no image transmission.	The unit's configuration.	Check all configuration parameters.
	Faulty installation.	Check all cables, plugs, contacts and connections.

10 Maintenance

10.1 Repairs



Danger!

Disconnect power before servicing or disassembling the housing or unit.
Never remove the front or end caps unless power is disconnected from the unit.



Caution!

The camera itself does not contain any user-serviceable parts. Ensure that all maintenance or repair work is performed only by qualified personnel. If in doubt, contact your dealer's technical service center.

The unit has some user-serviceable parts, including the camera and lens. These parts are available as spare parts. Please contact your local service center for information about obtaining these parts.

10.2 Removal of the Camera and Lens

1. Remove the sliding camera tray as shown in steps 1- 3 of *Configuration*, page 24.

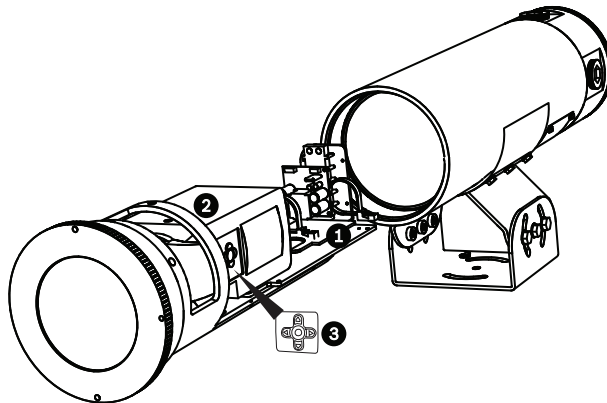


Figure 10.1: Camera pulled from housing

1	Inner mounting bracket assembly
2	DINION camera
3	DINION menu buttons

2. Remove all connections at the back of the camera.
3. Locate the mounting bolt for the camera on the bottom of the sliding tray and remove the bolt with a #3 Phillips screwdriver.
4. Remove the camera from the mounting tray.
5. Remove the lens from the camera.

10.3 Installation of the Camera and Lens

1. Install a new lens onto the camera.
2. Ensure that the camera and the lens are directed to the front and are parallel to the sliding tray.
3. Reinstall the mounting bolt with a #3 Phillips screwdriver. Tighten the camera mounting bolt to 4.5 N m (3.3 ft/lb).

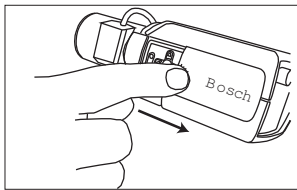
4. Complete the back focus adjustments as described in section 10.5. Attach all of the connections at the back of the camera at the same connection points as when removed.
5. Reinstall the sliding tray back into the housing as shown in steps 9 - 12 of *Configuration*, page 24.

10.4

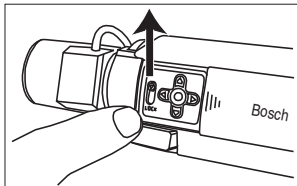
Back Focus Adjustment

To optimize picture sharpness in both bright and low-level lighting, adjust the back focus. Use the camera's unique Lens Wizard. This ensures that the object of interest always remains in focus, even when focusing at the maximum lens iris opening (for example, at night).– When back focusing varifocal lenses, adjust to obtain a sharp picture in both wide-angle and tele positions for both far and near focus.– When back focusing zoom lenses, ensure that the object of interest remains in focus throughout the entire zoom range of the lens. To adjust back focus:

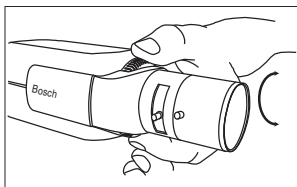
1. Open the side door panel at the side of the camera.



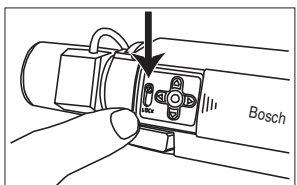
2. Unlock the back focus locking button.



3. Press and hold the center key for more than two (2) seconds until the **Install** menu appears.
4. Select **Lens Wizard** and move the cursor to the **Set Back Focus Now** option.
5. Turn the back focus adjustment as necessary.



6. Lock the back focus locking button.



7. Press and hold the center key for more than two (2) seconds until all menus disappear.
8. Close the side door panel.

10.5

Replacement of the Mounting Cradle

1. Disconnect power from the unit and, optionally, remove all connections.

2. Using a 10 mm wrench or the multi-use tool, remove the three (3) M6 bolts holding the mounting cradle to the mounting surface.
3. Put the unit in a safe location.
4. Using a 7 mm wrench or the multi-use tool, remove the seven (7) M4 bolts holding the mounting cradle to the housing.
5. Install a new mounting cradle in reverse of installation and tighten the seven (7) M4 bolts to 2.0 N m (1.5 ft/lb).
6. Finish installation as described in *Mounting*, page 26.

11

Technical data

For product specifications, see the datasheet for your camera, available on the appropriate product pages of the Online Product Catalog at www.boschsecurity.com.

Bosch Security Systems, Inc.

1706 Hempstead Road
Lancaster, PA, 17601
USA

www.boschsecurity.com

© Bosch Security Systems, Inc., 2016

Bosch Sicherheitssysteme GmbH
Robert-Bosch-Ring 5
85630 Grasbrunn

Germany

www.boschsecurity.com