



FE8191 FE8391-V

Fisheye Network Camera



Ultra Megapixel · 12MP CMOS Sensor · 360° Surround View · PPTZ ·
360° 10 Meter IR · Smart IR · 3DNR · IP66 · IK10 · Pixel Calculator

VIVOTEK's FE8191 and FE8391-V are market-leading Ultra-Megapixel fisheye fixed dome network cameras, both featuring a detailed 12-Megapixel CMOS sensor which guarantees superb image quality. Equipped with a 1.5 mm fisheye lens for 180° panoramic view (wall mount) or 360° surround view (ceiling/wall/floor mount) with zero blind spots, the cameras are able to provide total coverage of wide, open areas, such as airports, shopping malls, parking lots, retail stores, offices and more.

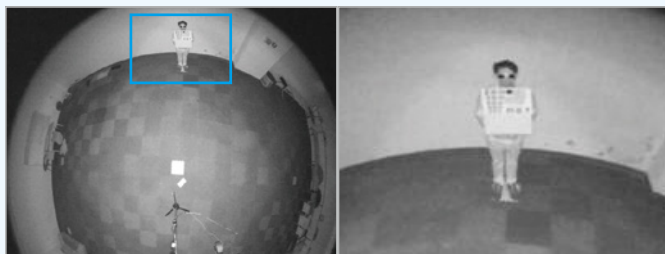
The FE8191 and FE8391-V are both equipped with a removable IR-cut filter and WDR Enhancement technology, which allows the cameras to maintain optimal image quality around the clock and unparalleled visibility under high-contrast lighting environments. 3D Noise Reduction technology enables the cameras to capture clear, polished video under low-light conditions. Plus, both are compatible with VIVOTEK's Panoramic PTZ solution, allowing users to simultaneously monitor an area overview from a fisheye model while providing a detailed regional view from a speed dome camera.

In addition, the FE8391-V uniquely features built-in IR LEDs, making this camera the world's first Ultra-Megapixel fisheye network camera with IR illumination. With its patent-protected light cup, the FE8391-V provides highly uniform 360° surround illumination for clear viewing up to 10 meters, even in completely dark environments.

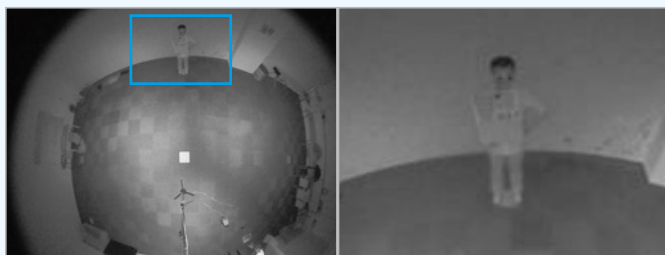
Finally, securing your investment, the FE8391-V is designed with vandal-proof IK10-rated and weather-proof IP66-rated housing which guaranty the camera's durability even in the harshest environmental conditions or where vandalism is a problem.

Key Features

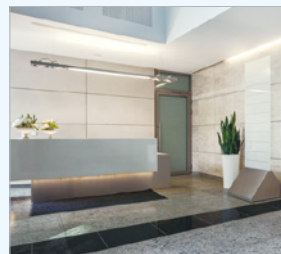
- 12-Megapixel CMOS Sensor
- 12 fps @ 2944x2944
- 1.5 mm Fisheye Lens for 180° Panoramic View and 360° Surround View
- Removable IR-cut Filter for Day & Night Function
- 360° 10 Meter IR (FE8391-V)
- Real-time H.264 and MJPEG Compression
- WDR Enhancement for Unparalleled Visibility in Extremely Bright and Dark Environments
- 3D Noise Reduction for Low-light Conditions
- Panoramic PTZ Function with Speed Dome Camera for monitoring detailed regional view.
- ePTZ for Data Efficiency
- Support Local Dewarping
- Pixel Calculator for Image Clarity Measurement
- 802.3at PoE Compliant
- Vandal-proof IK10-rated and Weather-proof IP66-rated Housing (FE8391-V)
- Built-in MicroSD/SDHC/SDXC Card Slot for On-board Storage



IR with High Uniformity



IR with Low Uniformity



Lobby



Shopping Mall



Airport



Low Light

Technical Specifications

Models	FE8191: Ultra-Megapixel FE8391-V: Ultra-Megapixel, Built-in IR, IP66, IK10
System Information	
CPU	Multimedia SoC (System-on-Chip)
Flash	256 MB
RAM	1GB
Camera Features	
Image Sensor	1/2.3" Progressive CMOS in 4072x3046
Maximum Resolution	2944x2944
Lens Type	Fixed-focal
Focal Length	f = 1.5 mm
Aperture	F2.8
Field of View	180° (horizontal) 180° (vertical) 180° (diagonal)
Shutter Time	1/5 sec. to 1/8,000 sec.
WDR Technology	WDR Enhanced
Day/Night	Removable IR-cut filter for day & night function
Minimum Illumination	0.75 Lux, 30 IRE (Color) <0.01 Lux, 30 IRE (BW)
Preset Locations	20
Pan/tilt/zoom Functionalities	ePTZ: 12x digital zoom
IR Illuminators	Built-in IR illuminators, effective up to 10 meters with Smart IR (FE8391-V) IR LED*6 (FE8391-V)
On-board Storage	MicroSD/SDHC/SDXC card slot
Video	
Compression	H.264, MJPEG
Maximum Frame Rate	12 fps @ 2944x2944
Maximum Streams	4 Simultaneous Streams
S/N Ratio	56dB
Dynamic Range	60dB
Video Streaming	Adjustable resolution, quality and bitrate Configurable video cropping for bandwidth saving
Image Settings	Time stamp, text overlay, flip & mirror, scheduled profile settings, configurable brightness/contrast/saturation/sharpness, pixel calculator, 3D-Noise reduction, 2D-Noise reduction, white balance, exposure control, gain, backlight compensation, privacy masks
Audio	
Audio Capability	Audio input/output (full duplex)
Compression	AAC, G.711, G.726
Interface	Built-in Microphone External Microphone input External Line output
Effective Range	5 meters
Network	
Users	Live viewing for up to 10 clients
Protocols	IPv4, IPv6, TCP/IP, HTTP, HTTPS, UPnP, RTSP/RTMP, IGMP, SMTP, FTP, DHCP, NTP, DNS, DDNS, PPPoE, CoS, QoS, SNMP, 802.1X, UDP, ICMP, ARP, SSL, TLS
Interface	10 Base-T/100 BaseTX Ethernet (RJ-45) *It is highly recommended to use standard CAT5e & CAT6 cables which are compliant with the 3P/ETL standard.
ONVIF	Supported, specification available at www.onvif.org
Intelligent Video	
Video Motion Detection	Five-window video motion detection

Alarm and Event

Alarm Triggers	Motion detection, manual trigger, digital input, periodical trigger, system boot, recording notification, camera tampering detection, audio detection
Alarm Events	Event notification using digital output, HTTP, SMTP, FTP and NAS server

General

Connectors	RJ-45 for Network/PoE connection Audio input *1 Audio output *1 DC 12V Power input Digital input *1 Digital output *1
LED Indicator	System power and status indicator
Power Input	DC 12V IEEE 802.3at PoE Class 4
Power Consumption	FE8191: DC12V 11.2W/PoE 12.3W FE8391-V: DC12V 21.7W/PoE 23.4W
Dimensions	FE8191: Ø 160 x 39 mm FE8391-V: Ø 160 x 51 mm
Weight	FE8191: 597 g FE8391-V: 805 g
Casing	Weather-proof IP66-rated housing (FE8391-V) Vandal-proof IK10-rated metal housing (FE8391-V)
Safety Certifications	FE8191: CE, LVD, VCCI, C-Tick, UL, FCC Class B FE8391-V: CE, LVD, VCCI, C-Tick, UL, FCC Class A
Operating Temperature	FE8191: Starting Temperature: 0°C ~ 50°C (32°F ~ 122°F) Working Temperature: -10°C ~ 50°C (14°F ~ 122°F) FE8391-V: Starting Temperature: -25°C ~ 50°C (-13°F ~ 122°F) Working Temperature: -40°C ~ 50°C (-40°F ~ 122°F)
Warranty	36 months

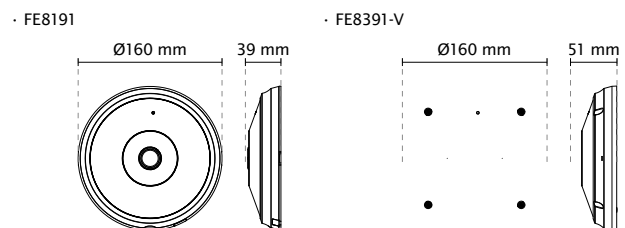
System Requirements

Operating System	Microsoft Windows 7/Vista/XP/2000/8
Web Browser	Mozilla Firefox: 7 or above (streaming only) Chrome: 17 or above (streaming only) Safari: 5.1.4 or above (streaming only) Internet Explorer 7/8/9/10/11
Other Players	VLC: 1.1.11 or above QuickTime: 7 or above

Included Accessories

CD	User's manual, quick installation guide, Installation Wizard 2, ST7501 32-channel, VAST CMS (Free trial version for 60 days), Calibration Tool
Others	Quick installation guide, warranty card, alignment sticker, waterproof connector, desiccant bag, RJ45 coupler, software CD, Cable management bracket (FE8391-V)

Dimensions



Compatible Accessories

Mounting Kits



AM-51A/AM-520
Dome adapter



AM-116/AM-117
Pendant pipe



AM-114/AM-118
Pendant head



AM-517
Adapter Ring

All specifications are subject to change without notice. Copyright © VIVOTEK INC. All rights reserved.

Ver. 14